

Charmwell, Wellington Road, Bournemouth,

BH8 8JL

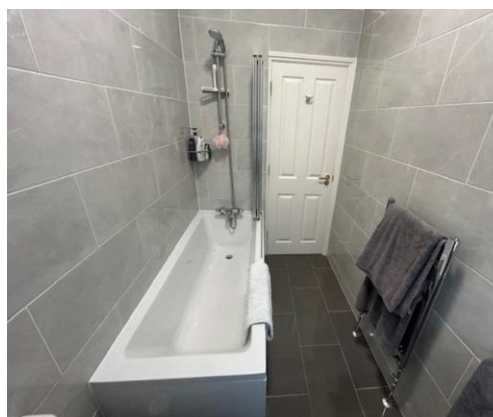
2 Bedrooms

house & son

www.houseandson.net

01202 242000

nick.b@houseandson.net



Features:

TWO DOUBLE
BEDROOMS

UNFURNISHED

GROUND FLOOR

ALLOCATED
PARKING SPACE

GAS CENTRAL
HEATING &
DOUBLE GLAZING

BRIGHT & MODERN
THROUGHOUT

GREAT LOCATION

Description:

LANDSDOWNE/CHARMINSTER – A WELL PRESENTED UNFURNISHED two bedroom GROUND FLOOR apartment located within walking distance of the local amenities of both the Lansdowne and Charminster. TWO DOUBLE BEDROOMS, with built-in wardrobes to one of the bedrooms; large lounge/diner; kitchen with gas hob/electric oven, BRAND NEW WASHER DRYER, and space for a fridge freezer; bathroom with shower facility. Property benefits from both GAS CENTRAL HEATING and DOUBLE GLAZING, and also comes with use of an ALLOCATED PARKING SPACE. A BRIGHT & MODERN apartment in a great location. FULLY MANAGED. AVAILABLE 16/02/2026.

£1250 pcm

Available 16th February 2026