



1 Eastbury Way, Swindon

Swindon



1 Eastbury Way

Swindon, Swindon

- FOUR DOUBLE BEDROOMS - DETACHED - GARAGE & PARKING - EX SHOW HOME - GENEROUS PLOT - NO ONWARD CHAIN - Offered to the market is this spacious, double fronted four DOUBLE BEDROOM family home situated in the ever popular Redhouse area, North Swindon. The property offers flexible living accommodation benefitting from three reception rooms, a spacious kitchen/diner, utility room, family bathroom and four double bedrooms of which the master accommodates an en-suite. Furthermore, whilst being an ex show home, the property occupies a generous corner plot with ample driveway parking to the rear and access directly into the garage from the rear garden. Local amenities such as the Orbital Shopping Park and various schools and other shops are all within walking distance.









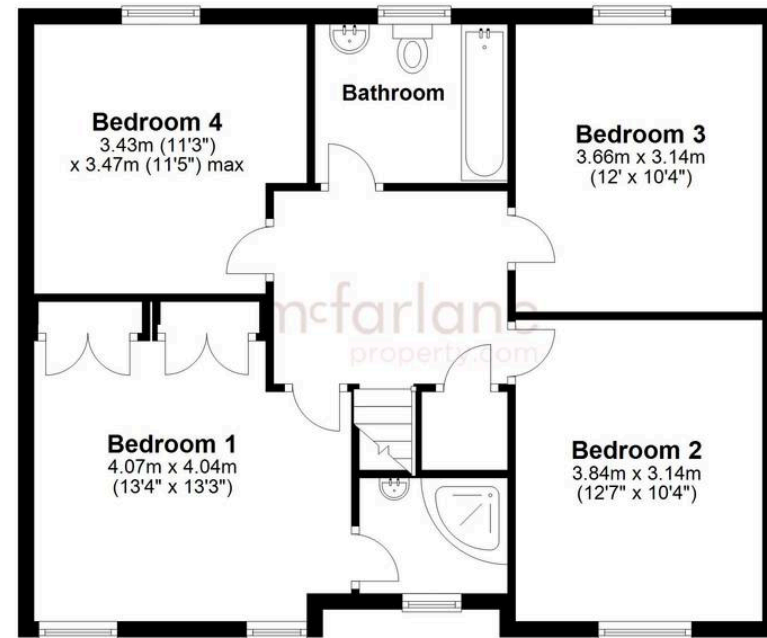
Ground Floor

Approx. 73.6 sq. metres (792.0 sq. feet)



First Floor

Approx. 69.5 sq. metres (748.4 sq. feet)



Total area: approx. 143.1 sq. metres (1540.3 sq. feet)

McFarlane Sales & Lettings

North Swindon, Redhouse Village Centre, Swindon – SN25 2FW

01793 296600 • swindon@mcfarlaneproperty.com • www.mcfarlaneproperty.com/