

Mansfield Road, Ilford – IG1

£1,700 pcm Leasehold



**HIGHCASTLE
ESTATES**

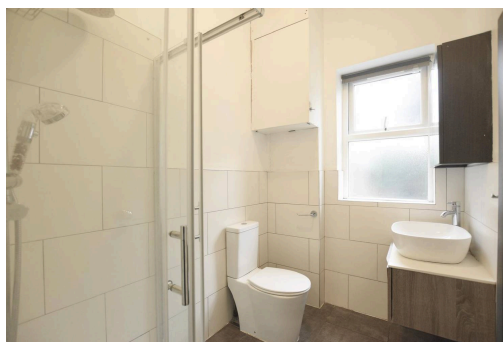
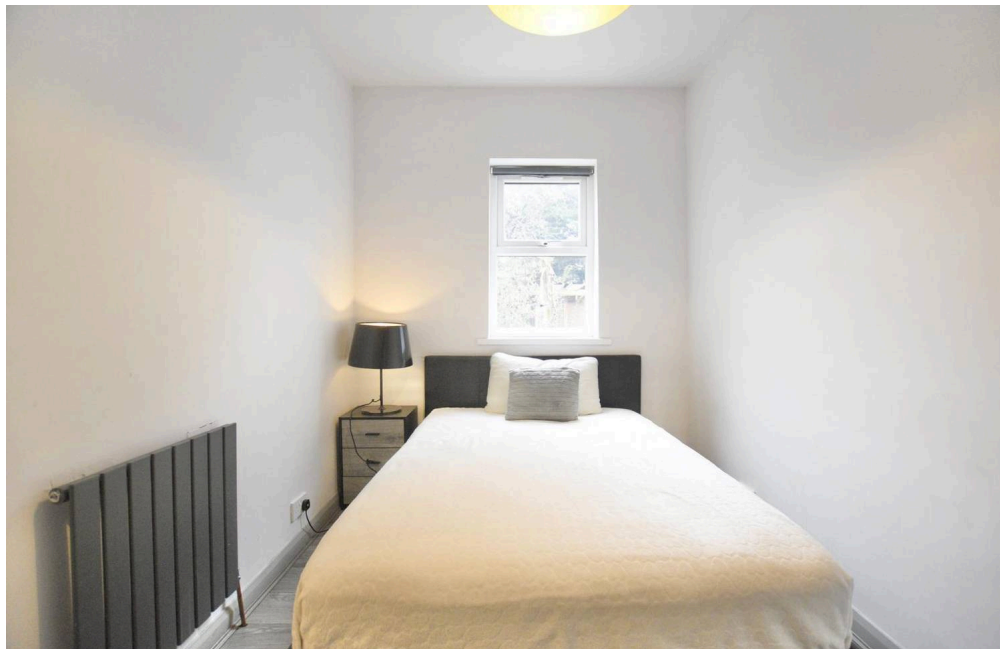
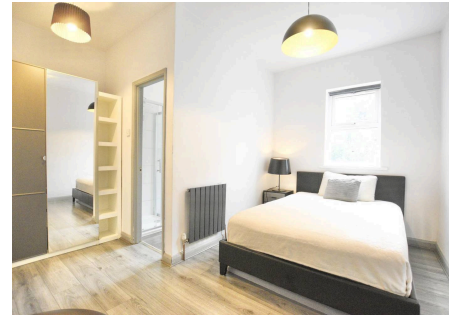
020 3026 4420
lettings@hceuk.com

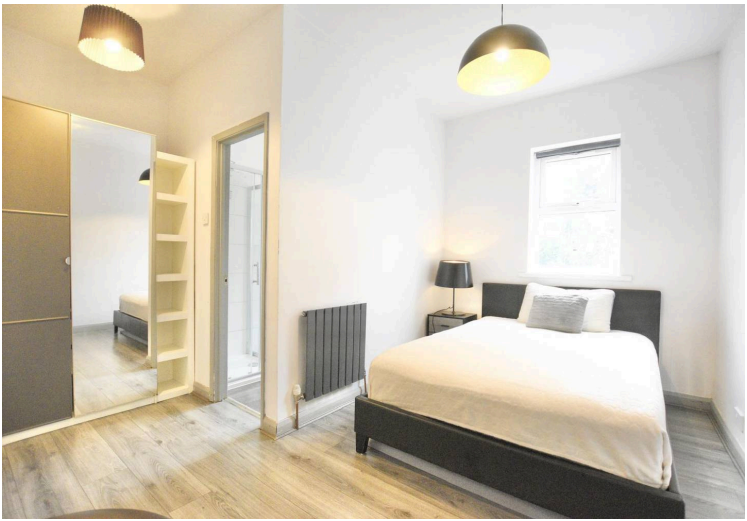
Charming 1-Bedroom Ground Floor Flat with Parking & Garden – Mansfield Road, Ilford, IG1 Welcome to this delightful ground floor 1-bedroom flat on Mansfield Road, perfectly positioned in the vibrant heart of Ilford (IG1). Combining modern comfort with everyday convenience, this superb home offers private parking and a lovely outdoor garden space – a rare find in this sought-after location.
Council Tax band: A

Tenure: Leasehold

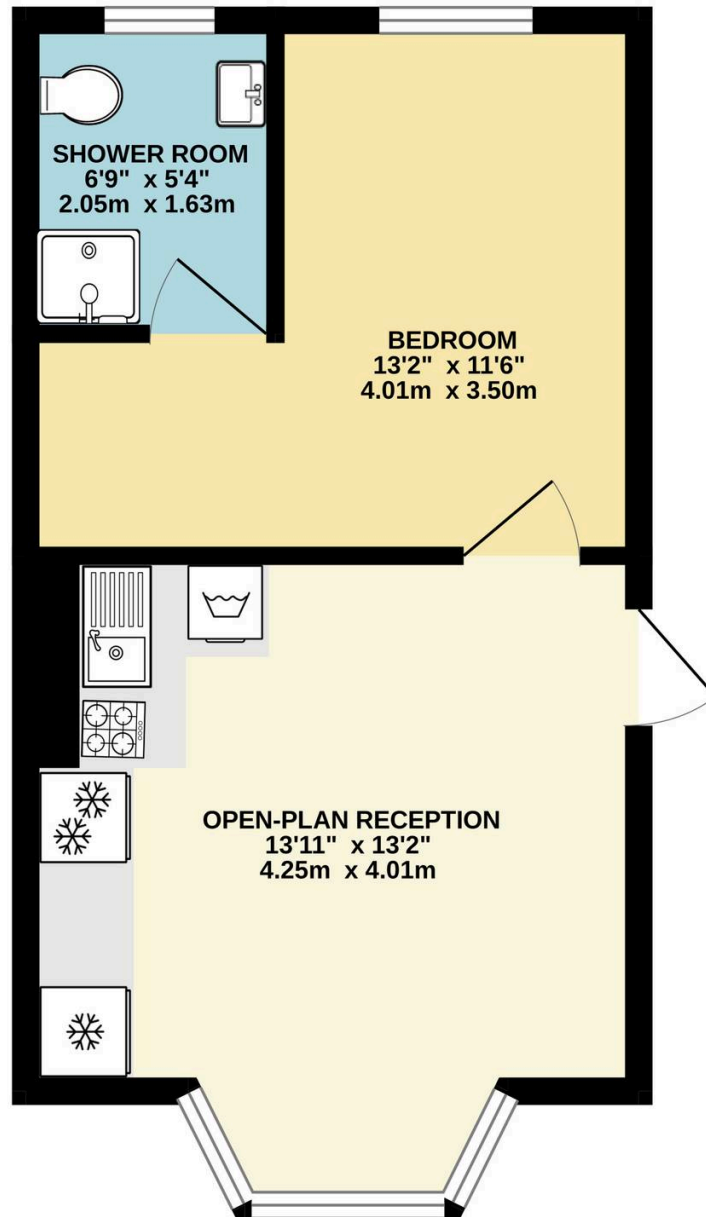
EPC Energy Efficiency Rating: C

EPC Environmental Impact Rating: C





GROUND FLOOR
311 sq.ft. (28.9 sq.m.) approx.



TOTAL FLOOR AREA : 311 sq.ft. (28.9 sq.m.) approx.

Whilst every attempt has been made to ensure the accuracy of the floorplan contained here, measurements of doors, windows, rooms and any other items are approximate and no responsibility is taken for any error, omission or mis-statement. This plan is for illustrative purposes only and should be used as such by any prospective purchaser. The services, systems and appliances shown have not been tested and no guarantee as to their operability or efficiency can be given.
Made with Metropix ©2026

You can include any text here. The text can be modified upon generating your brochure.