



30 Halsey Park, London Colney
£520,000

30 Halsey Park

London Colney, St. Albans

A well-positioned three-bedroom link-detached home set within the highly regarded Halsey Park development, just a short walk from London Colney Shopping Fields. The property is presented in good order throughout and is offered chain free.

The ground floor welcomes you with a spacious lounge that flows through to a modern kitchen/dining area, ideal for both everyday living and entertaining. A cloakroom completes the ground floor accommodation.

Upstairs, the first floor offers three well-proportioned bedrooms alongside a contemporary, stylish shower room.

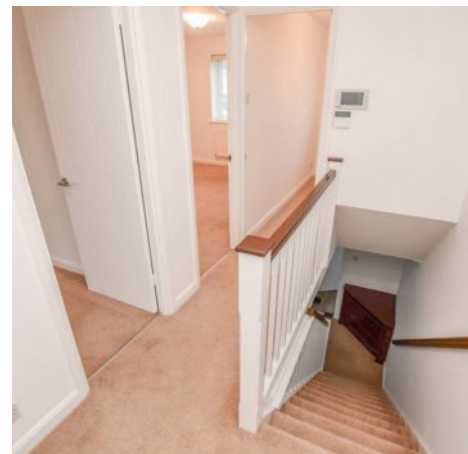
Externally, the property benefits from a private, enclosed rear garden featuring a generous patio area, with direct access to the garage. To the front, there is off-street parking for two vehicles.

Located within the sought-after Halsey Park development, AL2, the area offers a well-established residential setting with a strong sense of community. Residents benefit from easy access to local shops, cafés, and everyday amenities at London Colney, as well as nearby open green spaces and leisure facilities. The location is also highly convenient for commuters, with excellent access to the M25 providing straightforward routes to surrounding towns, airports, and the wider motorway network.

Council Tax band: E

Tenure: Freehold

EPC Energy Efficiency Rating: E







30 Halsey Park

London Colney, St. Albans

- Link Detached
- Three Bedrooms
- Kitchen/Diner
- Cloakroom
- Modern Shower Room
- Garage
- Enclosed Rear Garden
- Off Street Parking
- Chain Free

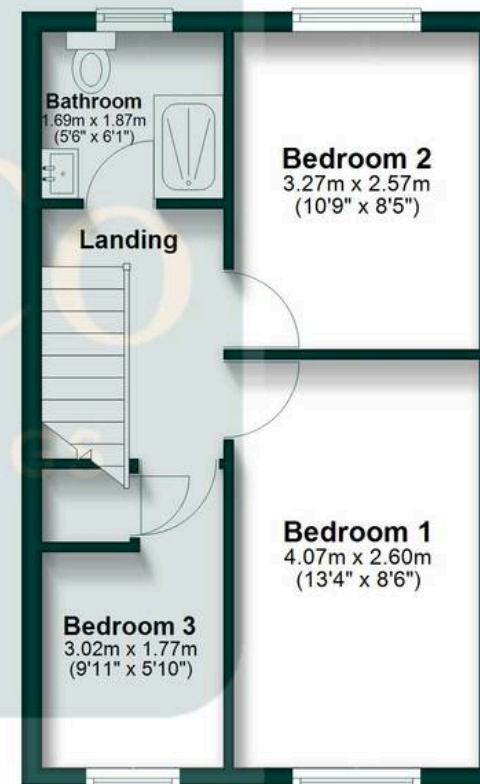
Ground Floor

Approx. 66.9 sq. metres (720.5 sq. feet)

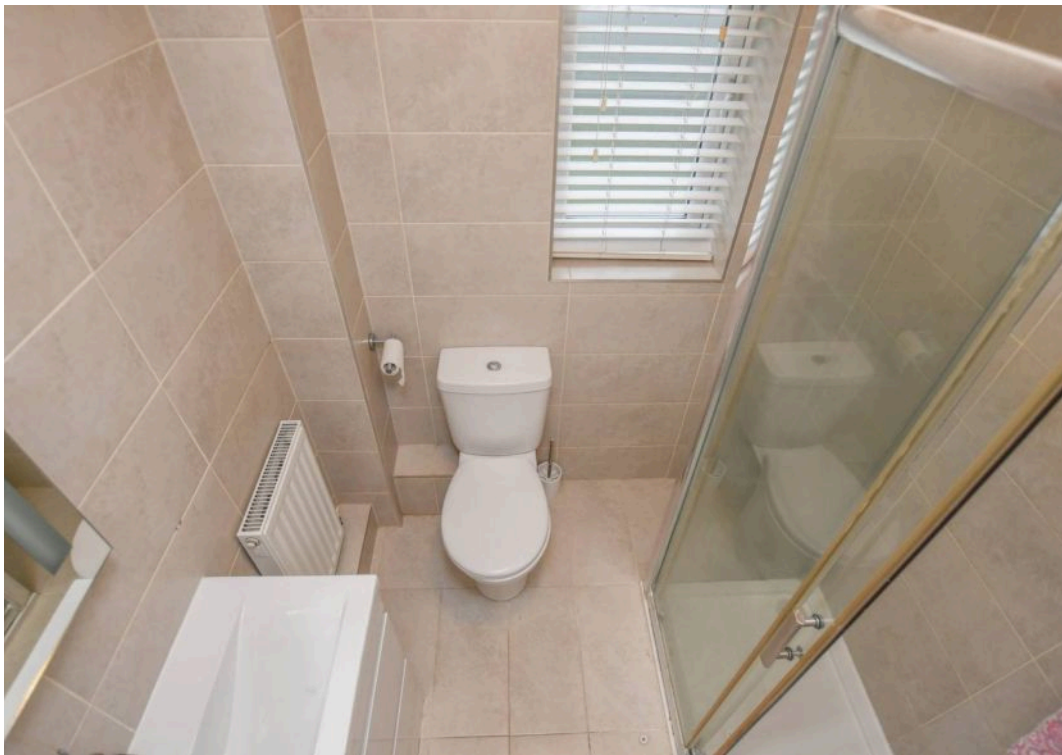


First Floor

Approx. 33.3 sq. metres (358.7 sq. feet)



Total area: approx. 100.3 sq. metres (1079.2 sq. feet)





JW&Co

J W & Co Langleys, 3 London Road - AL1 1LA

01727 844444 • stalbins@jwandco.co.uk • www.jwandco.co.uk/

