



eden  
estates

1 Lewis Mews, Snodland

Guide Price £380,000

eden  
estates



# 1 Lewis Mews

Snodland, Snodland

GUIDE £380k-£420k. Beautiful 3 bed end terrace with 16ft lounge, modern kitchen, dining room, south facing garden, driveway, downstairs WC, near M20, shops, rail link. Ideal first time buy.  
Council Tax band: C

Tenure: Freehold

- 3 BEDROOM HOUSE
- END OF TERRACE
- LANDSCAPED SOUTH FACING GARDEN
- 16FT LOUNGE & FITTED KITCHEN WITH SEPARATE DINING ROOM
- EXCELLENT LOCATION WITH EASY ACCESS TO THE M20 & A SHORT WALK TO LOCAL SHOPPING FACILITIES AND TRANSPORT LINKS
- WONDERFULLY PRESENTED THROUHOUT
- SPACIOUS DRIVEWAY
- DOWNSTAIRS WC
- IDEAL FIRST TIME BUY



eden  
estates

### Dining Room

10' 5" x 9' 2" (3.18m x 2.79m)

### Kitchen

10' 5" x 6' 5" (3.18m x 1.95m)

### Living Room

13' 5" x 16' 0" (4.09m x 4.88m)

### Wc

### Bedroom 1

10' 0" x 8' 2" (3.05m x 2.48m)

### Bedroom 2

13' 11" x 8' 2" (4.24m x 2.48m)

### Bedroom 3

10' 8" x 5' 10" (3.26m x 1.79m)

### Bathroom







**GARDEN**

**SOUTH FACING GARDEN**

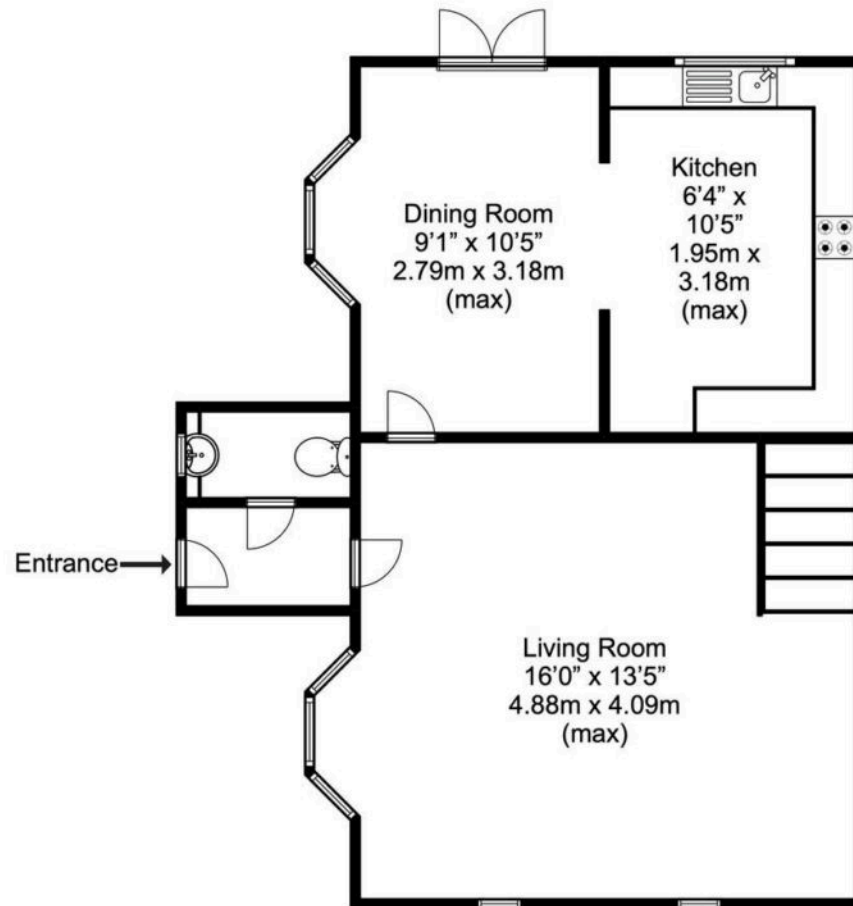
**OFF STREET**

**4 Parking Spaces**

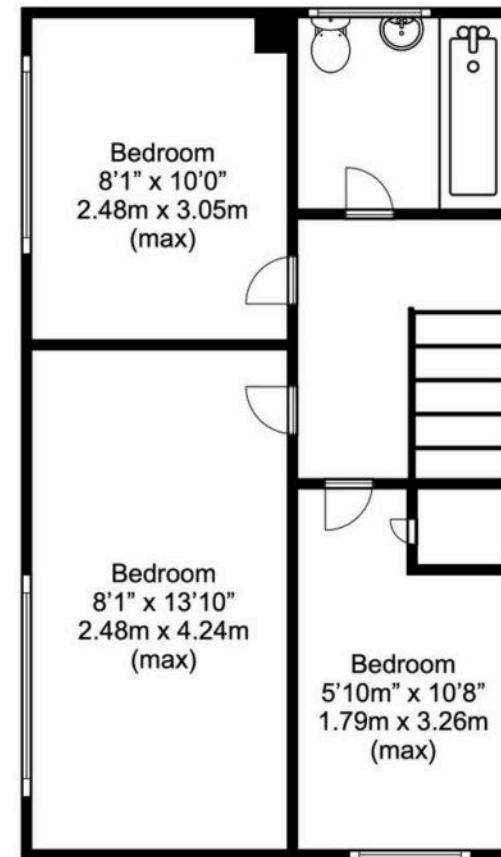




Approx. total  
floor area  
727 SQ.FT.  
67.64 SQ.M.



Ground Floor  
Approx. floor area  
387 SQ.FT.  
36.02 SQ.M.



First Floor  
Approx. floor area  
340 SQ.FT.  
31.62 SQ.M.

#### Disclaimer

This plan is for illustrative purposes only and no responsibility is taken for any error, omission or misstatement. The appliances shown have not been tested and no guarantee as to their operability or efficiency can be given. Measurements have been added as a guide to prospective buyers only, are not precise, not to scale, may have been taken from the widest area and may include wardrobe / cupboard space. Garages and outbuildings may not be represented in their actual location in relation to the property. Compass point, measurements and total areas should be considered inaccurate and checked as no guarantee is given to their accuracy. Buyers are strongly advised to take their own measurements and compass bearing.





## Eden Estates

781-783 London Road, Larkfield - ME20 6DE

01732 795162

[hey@eden-estates.co.uk](mailto:hey@eden-estates.co.uk)

[www.eden-estates.co.uk](http://www.eden-estates.co.uk)



eden  
estates