



Clifford Court, 24-25 Kensington Gardens Square, Bayswater

London W2

£300,000





## Clifford Court, 24-25 Kensington Gardens Square

Bayswater, London W2

Charming studio in Victorian conversion with lift access in Bayswater and access to tranquil communal garden.

Council Tax band: B

Tenure: Leasehold

EPC Energy Efficiency Rating: D

EPC Environmental Impact Rating: E

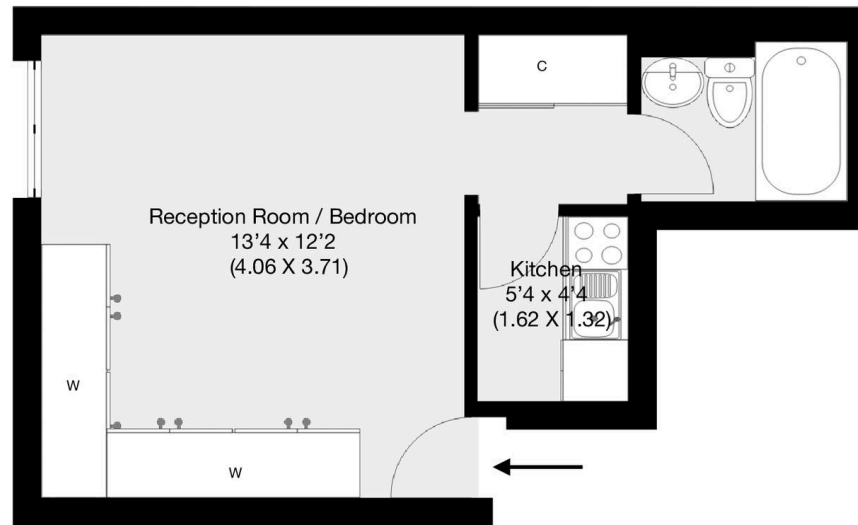






## 24-25 Kensington Gardens Square, London, W2

Approximate Gross Internal Area 22.4 sqm / 241 sqft



5th Floor

THIS FLOOR PLAN IS PRODUCED FOR GARRISON ESTATES SUBMITTED BY **ARCHIMEDIA** web: [www.archi-media.co.uk](http://www.archi-media.co.uk)

Whilst every attempt has been made to ensure the accuracy of the floor plan contained here, measurements of doors, windows and rooms are approximate and no responsibility is taken for any error, omission or misstatement. These plans are for representation purposes only and should be used as such by any prospective buyer or lease. Specifically no guarantee is given on the gross internal floor area of the property if quoted on this plan and any figures given is initial guidance only and should be treated as such.





## Garrison Estates

20 College Parade, Salusbury Road, Queens Park – NW6 6RN

020 4511 4820 • [contact@garrisonestates.co.uk](mailto:contact@garrisonestates.co.uk) • [www.garrisonestates.co.uk/](http://www.garrisonestates.co.uk/)