

JENNIE JONES

EST. 1992

ESTATE AGENTS



**HIGH STREET**

Wangford | Suffolk

**£485,000**









## 6 THE STREET, WANGFORD. NR34 8RR

**A beautifully presented four bedroom period home occupying a prime High Street position in the ever popular village of Wangford.**

Southwold – approx. 3 miles  
Halesworth – approx. 6 miles  
Beccles – approx. 12 miles

- Entrance Porch ● Sitting Room ● Dining Room ● Kitchen ● Snug /Study ● Cloakroom ●
- Four Bedrooms ● Ensuite ● Bathroom ●
- Enclosed Rear Garden ● Off Road Parking with Garage ●







## The Property

6 The High Street is a beautifully presented four bedroom period home occupying a prime High Street position in the ever-popular village of Wangford. Blending character features with stylish modern touches, this is a superb family home offering generous and versatile accommodation.

The sitting room is a standout feature, centred around a striking inglenook fireplace with exposed brickwork and a wood-burning stove. Exposed beams and timber detailing enhance the warmth and charm of the space, creating a welcoming atmosphere.

The kitchen is fitted in a classic shaker style with solid wood worktops and ample storage, flowing naturally into a dining area ideal for both family life and entertaining. A separate study/snug provides additional flexibility, perfect for home working or a playroom.

Upstairs, the property offers four well proportioned bedrooms. The principal bedroom benefits from access to an ensuite shower room, while the remaining bedrooms are served by a family bathroom featuring a freestanding roll top bath.

## Outside

The rear garden is attractively landscaped and enclosed, with a lawned area, established planting, and a decked terrace ideal for outdoor dining. To the side there is off-road parking and a garage.







**Location**

Wangford is a highly regarded village positioned just inland from the Suffolk Heritage Coast. The village itself offers a strong community feel with local amenities, public house and easy access to the coast and surrounding countryside.

**EPC Rating:** C

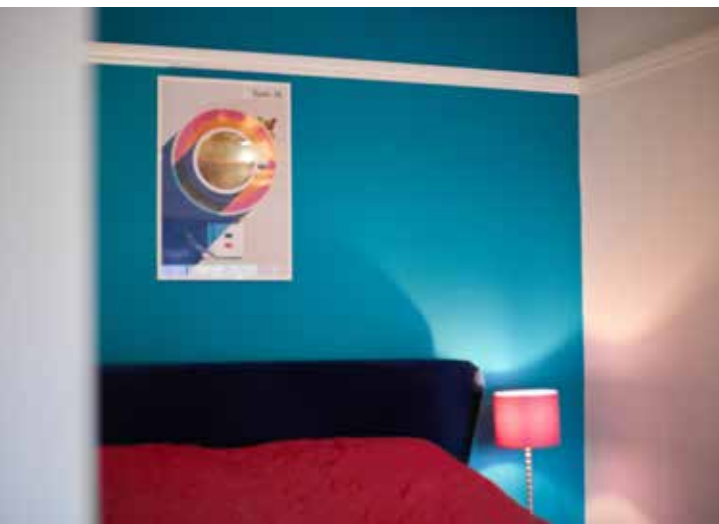
**Local Authority:** East Suffolk Council - Band D

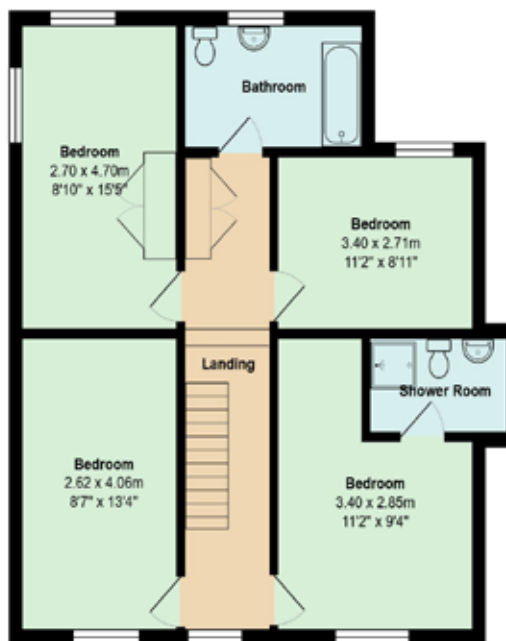
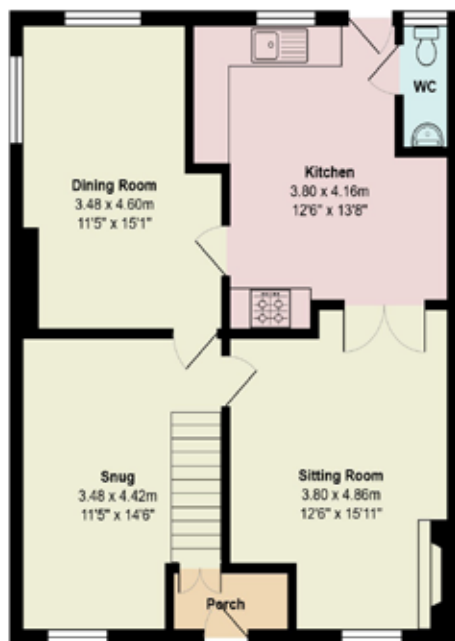
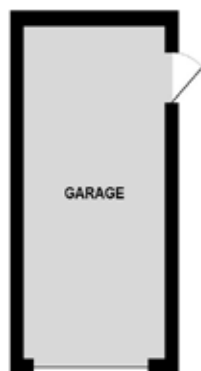
**Services:**

Mains electricity, gas, water & drainage

Gas heating with radiators

Double Glazing





**Jennie Jones**

26 High Street  
Saxmundham  
Suffolk  
IP17 1AB

www.jennie-jones.com  
**01728 605511**

**All enquiries:**

saxmundham@jennie-jones.com



Scan the QR code to  
watch our video tour



**JENNIE JONES**

EST. 1993

ESTATE AGENTS