



**A TOP FLOOR TWO BEDROOM APARTMENT WITH NO ONWARD CHAIN**

Eastbury Place, Eastbury Avenue, Northwood, Middlesex, HA6 3LQ

**ROBSONS**



Eastbury Place, Eastbury Avenue, Northwood,  
Middlesex, HA6 3LQ

**TOP FLOOR • TWO BEDROOMS • OPEN-PLAN  
KITCHEN/LIVING/DINING ROOM • SHOWER  
ROOM • BALCONY • COMMUNAL GARDENS •  
OFF-STREET PARKING • GARAGE • SHARE OF  
FREEHOLD • CHAIN FREE**

### Description

A well-presented top-floor two-bedroom apartment offering bright, well-proportioned accommodation throughout with no onward chain. The property comprises an open-plan kitchen/living/dining room, ideal for modern living and entertaining, with direct access to a private balcony. There are two bedrooms and a shower room.

Further benefits include access to well-maintained communal gardens, off-street non-allocated parking, and a garage, providing excellent storage or secure parking. This appealing apartment combines practical living space with desirable shared amenities, making it an ideal home or investment opportunity.







Northwood provides a range of shopping facilities including Waitrose supermarket, a variety of restaurants and other amenities with the Metropolitan Line station providing access to Baker Street and the City. There is a plethora of state and private schooling together with a wide choice of recreational facilities, which include golf courses and fitness centres. The M1, M40 and M25 motorways are also accessible.

NB this property is situated within the proximity of the ULEZ, if your vehicle does not comply charges may apply.

#### **Additional Information**

Tenure: Share of Freehold

Lease Length: 999 years from 25 March 2007

Service Charge: £1,800 p/a

Local Authority: Three Rivers

Council Tax Band: E

Energy Efficiency Rating: D

For additional information, please refer to [www.robsonswb.com](http://www.robsonswb.com) or call us on: 01923 835355.



Approximate Gross Internal Area = 70.8 sq m / 762 sq ft

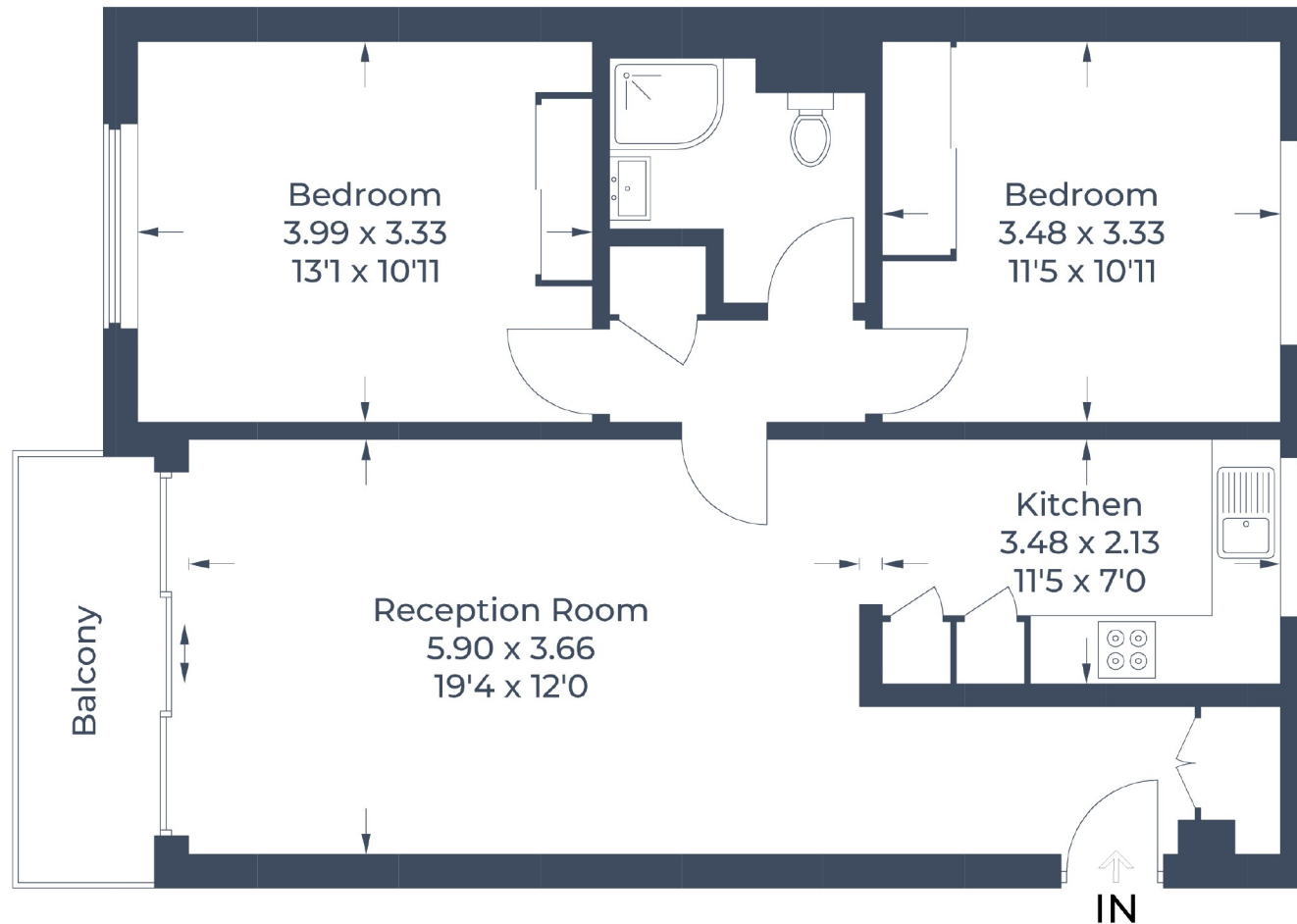


Illustration for identification purposes only,  
measurements are approximate, not to scale.  
© CJ Property Marketing Produced for Robsons

**ROBSONS**

7 Clive Parade, Northwood, HA6 2QF  
Tel: 01923 835355 Email: northwood@robsonswb.com  
[www.robsonswb.com](http://www.robsonswb.com)

SCAN TO VISIT



OUR WEBSITE

Important notice: Robsons, their clients and any joint agents give notice that 1: They are not authorised to make or give any representations or warranties in relation to the property either here or elsewhere, either on their own behalf or on behalf of their client or otherwise. They assume no responsibility for any statement that may be made in these particulars. These particulars do not form part of any offer or contract and must not be relied upon as statements or representations of fact. 2: Any areas, measurements or distances are approximate. Plot sizes and dimensions are taken from Promap and are approximate. The text, photographs and plans are for guidance only and are not necessarily comprehensive. It should not be assumed that the property has all necessary planning, building regulation or other consents and Robsons have not tested any services, equipment or facilities. Purchasers must satisfy themselves by inspection or otherwise.