



FLAT B, GOWRIE HOUSE,
BROICH TERRACE, CRIEFF, PH7 3BD

FLAT 2, GOWRIE HOUSE, BROICH TERRACE, CRIEFF, PH7 3BD

Irving Geddes are delighted to offer for sale this well presented two bedroom apartment, centrally located in the highly sought after Perthshire market town of Crieff.

Flat.2 is very well appointed, with good finishes throughout. Main door access, with lower accommodation comprising; ENTRANCE HALL, LOUNGE, modern fitted KITCHEN with breakfast bar, gas hob, electric oven & extractor fan, modern SHOWER ROOM with under-floor heating. The upper floor comprises; LANDING with useful office space, MASTER BEDROOM with built in wardrobes & small DOUBLE BEDROOM completing the layout. The property is warmed by gas central heating & is double glazed.

There is private parking immediately to the side of the property with the addition of a timber shed.

This is a great apartment of real quality, boasting a rarely available off-street location. Offered in true move-in condition & enjoying a prime central location in one of Perthshire's most sought after market towns.

Video Tour <https://my.matterport.com/show/?m=hrB2mvM9UWt>

Energy Performance Rated 'D'

Council Tax Band 'A'



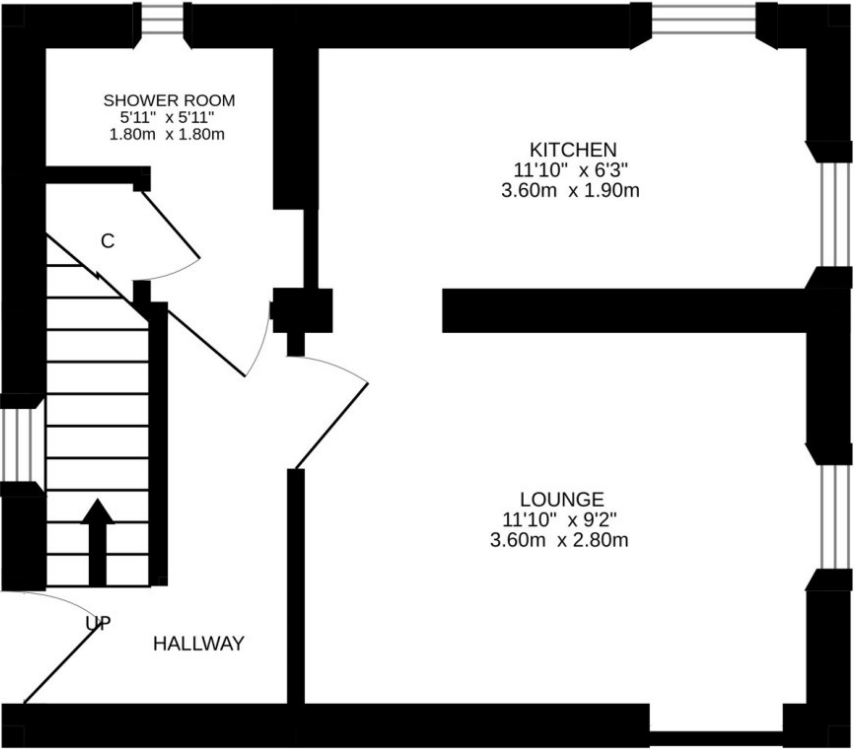




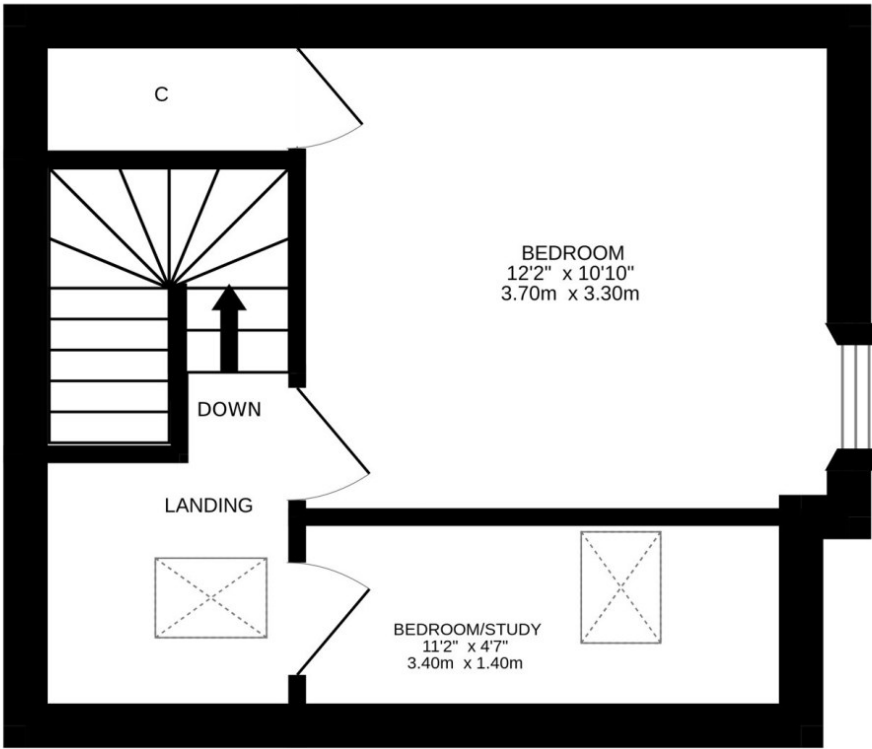


Crieff is a Scottish market town in Perth & Kinross on the A85 between Perth and Crianlarich, and the A822 between Greenloaning and Aberfeldy. The A822 joins the A823 to Dunfermline. Crieff has become a hub for tourism, famous for whisky and its history of cattle droving.

GROUND FLOOR



1ST FLOOR



These particulars are believed to be correct, but their accuracy is not guaranteed and they do not form part of any contract. All measurements are approximate only.



Crieff

25 West High Street, PH7 4AU
Tel: 01764 653771

Comrie

1 Drummond Street, PH6 2DW
Tel: 01764 670325

Aberfeldy

6 The Square, PH15 2DD
Tel: 01887 822722