



10 SHIELINGHILL PLACE, CRIEFF, PH7 4ER

10 SHEILINGHILL PLACE, CRIEFF, PH7 4ER

We are delighted to offer for sale this 3 bed detached bungalow enjoying a central location within the highly sought after market town of Crieff.

The layout comprises: VESTIBULE, HALLWAY, spacious LOUNGE open to a DINING area with patio doors to SUN ROOM/ CONSERVATORY, fitted KITCHEN, 3 BEDROOMS & SHOWER ROOM. The property is warmed by gas central heating & is double glazed throughout.

No.10 has private low maintenance gardens laid to gravel & mature planting, with ample private parking & handy car-port. The enclosed rear garden enjoys an open southerly outlook.

A quality home, enjoying a quiet cul-de-sac position. Presented in move-in condition and also offers scope for modernisation. Early viewing advised.

Energy Performance Rated 'C' Council Tax Band 'E'

Video Tour <https://my.matterport.com/show/?m=8CVLDaiDjd3>

Viewing by appointment through Irving Geddes - 01764 670325

IrvingGeddes
W.S. • Solicitors • Estate Agents

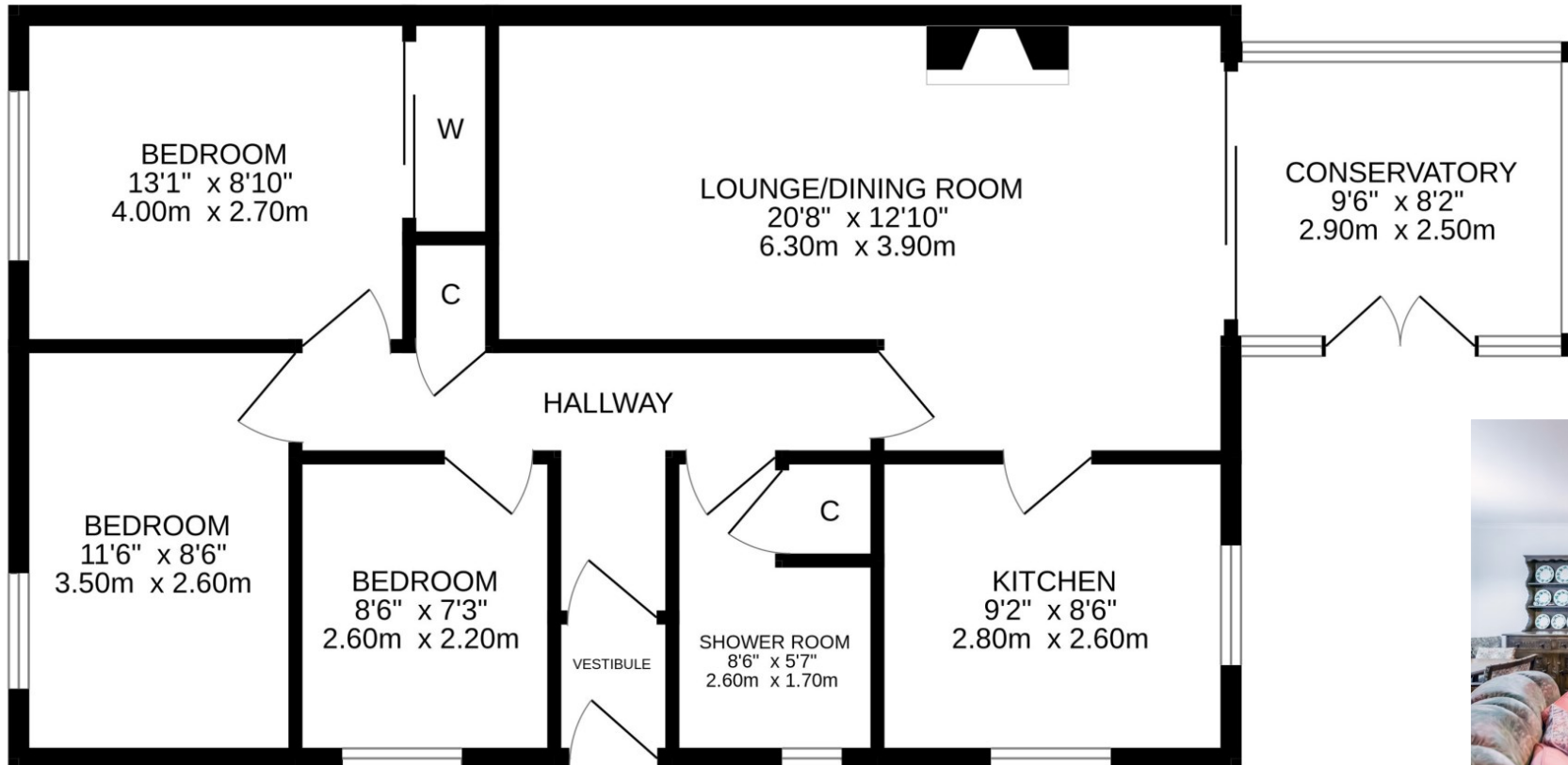












These particulars are believed to be correct, but their accuracy is not guaranteed and they do not form part of any contract. All measurements are approximate only.



Crieff

25 West High Street, PH7 4AU
Tel: 01764 653771

Comrie

1 Drummond Street, PH6 2DW
Tel: 01764 670325

Aberfeldy

6 The Square, PH15 2DD
Tel: 01887 822722