



Rivington, Cholmondeley Road, Salford

Salford

HILLS

Offers in Region of £150,000



## Rivington Cholmondeley Road, Salford

**\*\*TWO DOUBLE BEDROOM FIRST FLOOR APARTMENT  
COMING TO THE MARKET CHAIN FREE AND BENEFITTING  
FROM A MODERN NEWLY FITTED KITCHEN AND  
BATHROOM!\*\***

Council Tax band: A

Tenure: Leasehold

- Two Double Bedroom First Floor Apartment  
Coming To The Market CHAIN FREE!
- Within Walking Distance of Salford Royal Hospital
- Newly fitted contemporary kitchen and bathroom!
- Located on a Popular Block
- Benefits from Well-Kept Communal Gardens
- Plenty of Storage Throughout
- Ample Parking for Residents and Guests
- Spacious Open Plan Lounge Diner
- Potential to rent a garage on the block!



HILLS

**Entrance Hallway**

13' 8" x 3' 1" (4.17m x 0.95m)

**Lounge**

15' 11" x 12' 2" (4.85m x 3.71m)

**Kitchen**

7' 3" x 12' 0" (2.20m x 3.66m)

**Bedroom One**

13' 3" x 11' 1" (4.04m x 3.39m)

**Bedroom Two**

13' 3" x 8' 2" (4.05m x 2.48m)

**Shower Room**

6' 1" x 6' 10" (1.85m x 2.08m)



HILLS





**Entrance Hallway**

13' 8" x 3' 1" (4.17m x 0.95m)

**Lounge**

15' 11" x 12' 2" (4.85m x 3.71m)

**Kitchen**

7' 3" x 12' 0" (2.20m x 3.66m)

**Bedroom One**

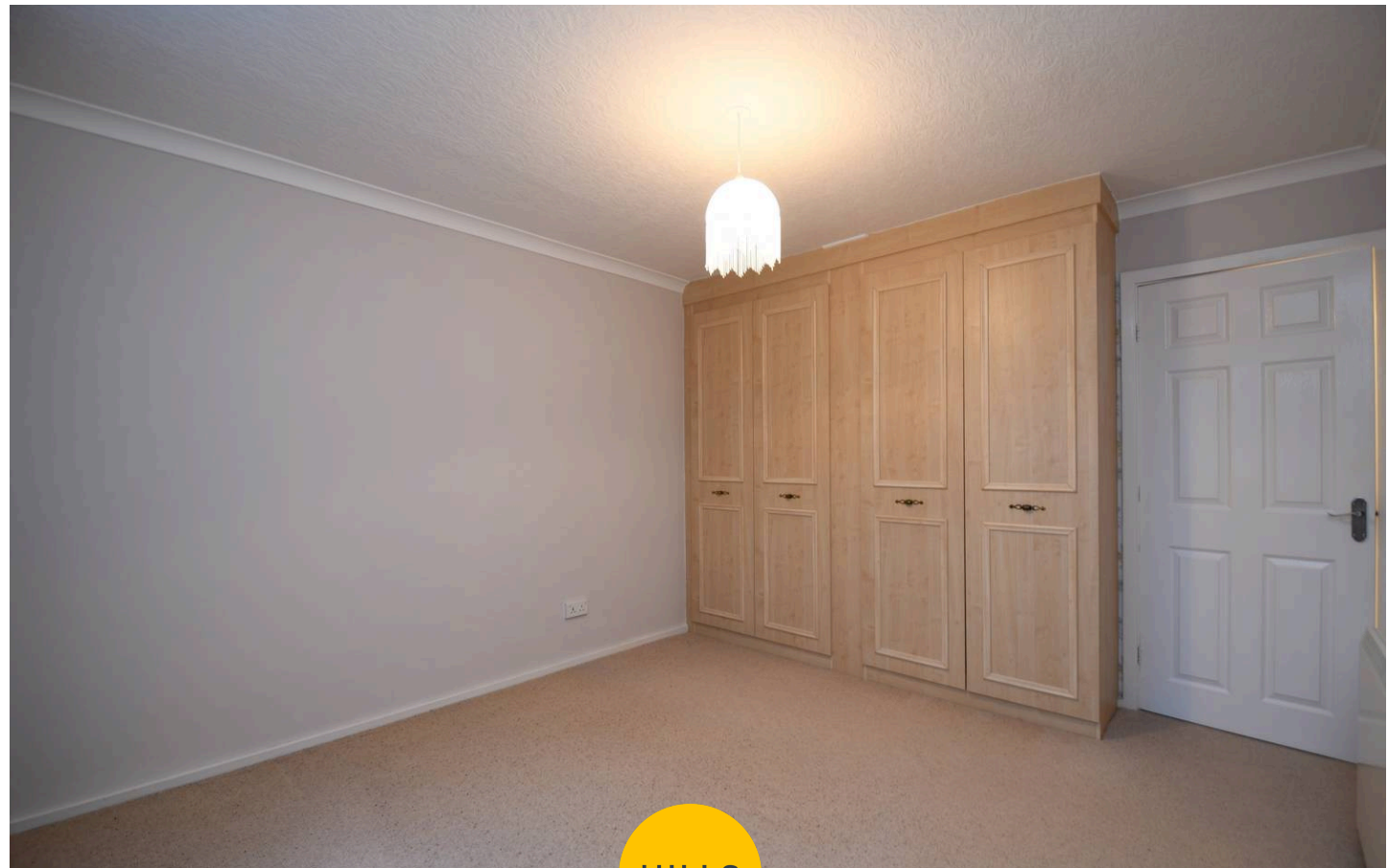
13' 3" x 11' 1" (4.04m x 3.39m)

**Bedroom Two**

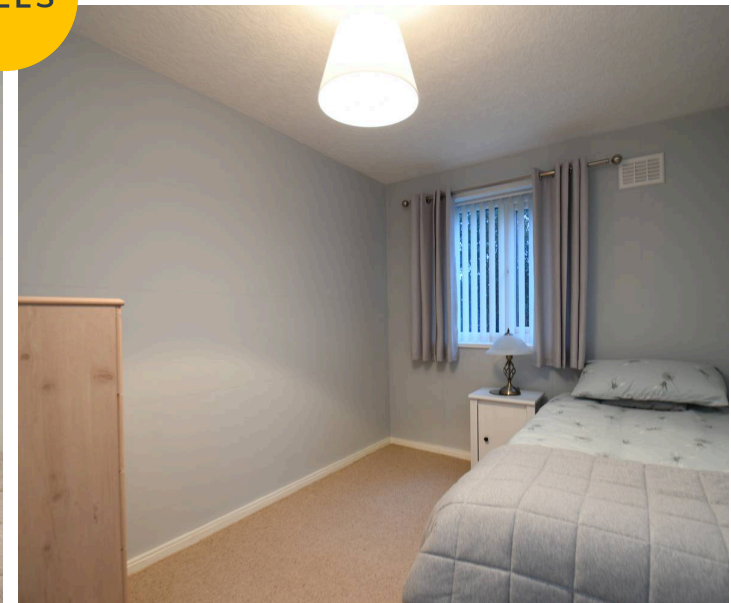
13' 3" x 8' 2" (4.05m x 2.48m)

**Shower Room**

6' 1" x 6' 10" (1.85m x 2.08m)



HILLS



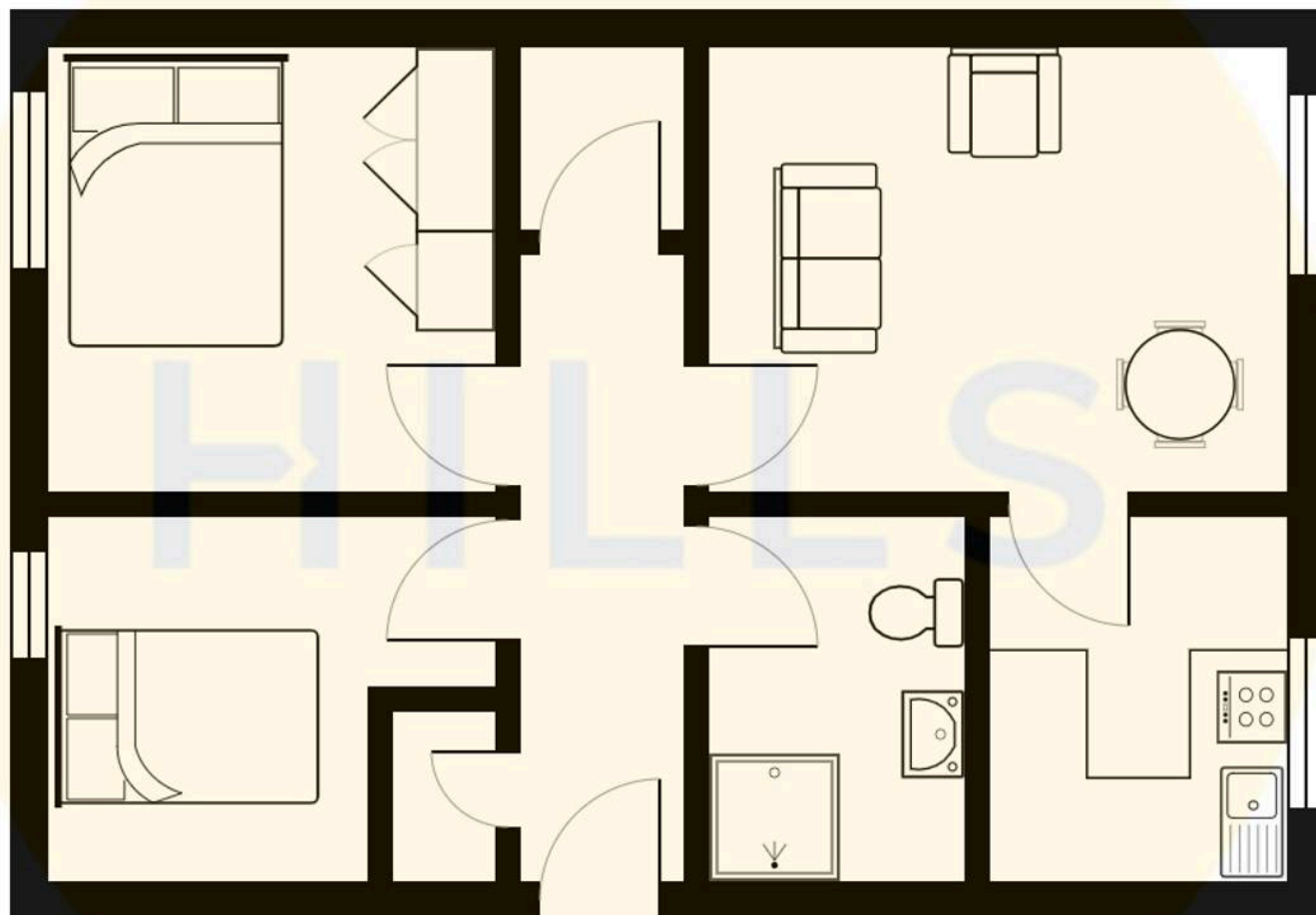




HILLS











## Hills | Salfords Estate Agent

Hills Residential, Sentinel House Albert Street – M30 0SS

0161 707 4900

[sales@hills.agency](mailto:sales@hills.agency)

[www.hills.agency/](http://www.hills.agency/)



By law, we are required to conduct anti-money laundering checks on all potential buyers and sellers. In line with HMRC guidelines, our trusted partner, Coadjute, will securely manage these checks on our behalf. A non-refundable fee of £45 + VAT per person will apply, and Coadjute will handle the payment. Once an offer is accepted, Coadjute will send a secure link for you to complete the biometric checks. These checks must be completed before we can send the memorandum of sale to all parties. PLEASE NOTE: The Agent has not tested any equipment, fixtures, fittings or services so cannot verify that they are in working order or fit for the purpose. References to the properties tenure are based on information supplied by the seller. You are advised to check the availability of this property before travelling any distance to view. Every effort has been made to ensure these particulars are correct and not misleading but their accuracy is not guaranteed nor do they form part of any contract.