



Purves Road, London NW10

£545,000 Share of Freehold

Welcome to Purves Road, a spacious and well-presented split-level apartment set on a good residential road in a great location. Quietly positioned yet incredibly convenient, the property is just a short walk from Kensal Green (Bakerloo) and Kensal Rise (Mildmay) stations, as well as the vibrant amenities of both College Road and Chamberlayne Road high streets. The apartment offers generous proportions throughout, extending to approximately 876 sq ft, and features two well-sized bedrooms, a bright reception space and a well-appointed eat-in kitchen, ideal for modern living and entertaining. Set over two levels, the layout provides a sense of space and separation rarely found locally. Further benefits include a share of freehold and the appeal of a sought-after, quiet residential setting while remaining moments from excellent transport links, shops, cafés and local amenities.

- Split level apartment
- First floor
- Two bedrooms
- Eat-in kitchen
- Fantastic location
- Share of Freehold
- 876 sq ft
- Good condition
- Great road
- Close to shops and transport



First Floor

Approx. 50.0 sq. metres (538.5 sq. feet)



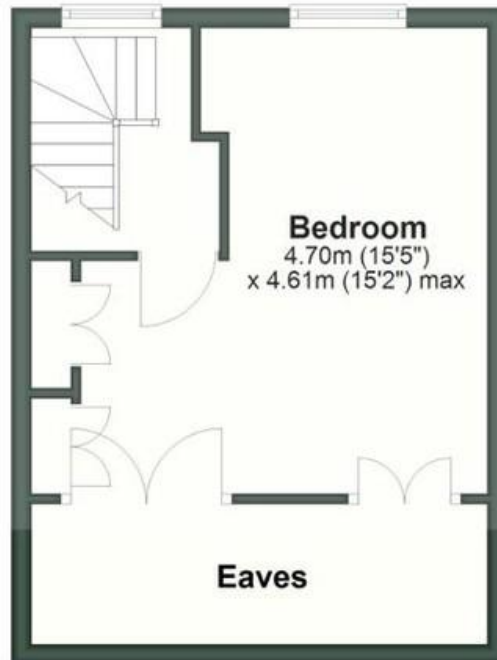
Ground Floor

Approx. 2.8 sq. metres (29.7 sq. feet)



Second Floor

Approx. 28.7 sq. metres (308.6 sq. feet)



Total area: approx. 81.5 sq. metres (876.9 sq. feet)

Purves Road

MONEY LAUNDERING REGULATIONS 2003: Intending purchasers will be asked to produce identification documentation at a later stage and we would ask for your co-operation in order that there will be no delay in agreeing the sale.

General: While we endeavour to make our sales particulars fair, accurate and reliable, they are only a general guide to the property and, accordingly, if there is any point which is of particular importance to you, please contact the office and we will be pleased to check the position for you, especially if you are contemplating travelling some distance to view the property.

Measurements: These approximate room sizes are only intended as general guidance. You must verify the dimensions carefully before ordering carpets or any built-in furniture.

Services: Please note we have not tested the services or any of the equipment or appliances in this property, accordingly we strongly advise prospective buyers to commission their own survey or service reports before finalising their offer to purchase.