



**Mark Antony**  
SALES & LETTING AGENTS

# To LET

## Clay Lane, Burtonwood Fully Furnished





## PROPERTY DESCRIPTION

This beautifully presented two bedroom terrace property is available to rent and comes fully furnished, offering the perfect opportunity to move straight in with ease. The home features a spacious open plan living and dining area, creating an inviting space for relaxing or entertaining family and friends. The kitchen is well designed for everyday cooking, and the bathroom is conveniently located on the ground floor and includes a standing shower. Upstairs, there are two well proportioned bedrooms, both offered with furniture. The property is situated in a popular and well connected area, with local amenities within walking distance and excellent access to nearby motorway links, making it ideal for commuters. This charming home is ready to welcome its new tenants.

## PROPERTY FEATURES

- Terrace Property
- Two Bedrooms
- Spacious Living Area
- Furnished
- Cottage Aesthetic
- Nearby Nature Walks
- Close to Motorway Links

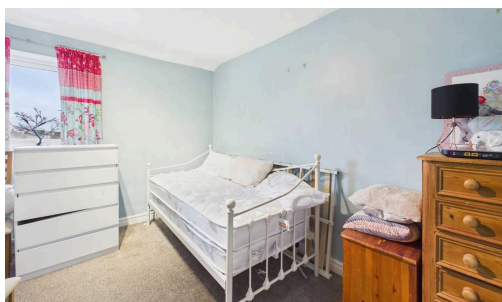


## NOTES TO PERSPECTIVE TENANTS

- Fully Furnished Property (Including sofa's, beds, cupboards, tables and chairs)
- Loft Space Excluded from the Tenancy
- Log Burner is available – Tenant will need to maintain e.g.: Sweep and clean it out as required if they are wanting to use.
- Appliances Included: Fridge, Freezer, Oven, Hob and Extractor Fan, Washing Machine.
- Other Appliances provided on a non repairable/Non Replaceable: Kettle, Toaster and Microwave.

## RENTAL AVAILABLE FROM

16th February 2026



**£50 FOR YOU!** \*and they sign up fully managed with us.

if you refer a Warrington landlord\*

**MA** Mark Antony

Note: These details have been prepared as a general guide only and do not constitute any part of any contract. The function of any appliances, services, sockets or cables are not guaranteed. Any interested party should satisfy themselves about any matter of importance to them and not rely on the contents of these particulars when making the decision to offer.

**safeagent** **The Property Ombudsman**

**SCAN ME!**