







## Mill Bank, Belle Vue Terrace

Barry, Barry

Detached two bedroom bungalow situated upon a large plot with a wraparound garden, parquet flooring and scope to extend (STPP). In need of modernisation with an EPC of E51.

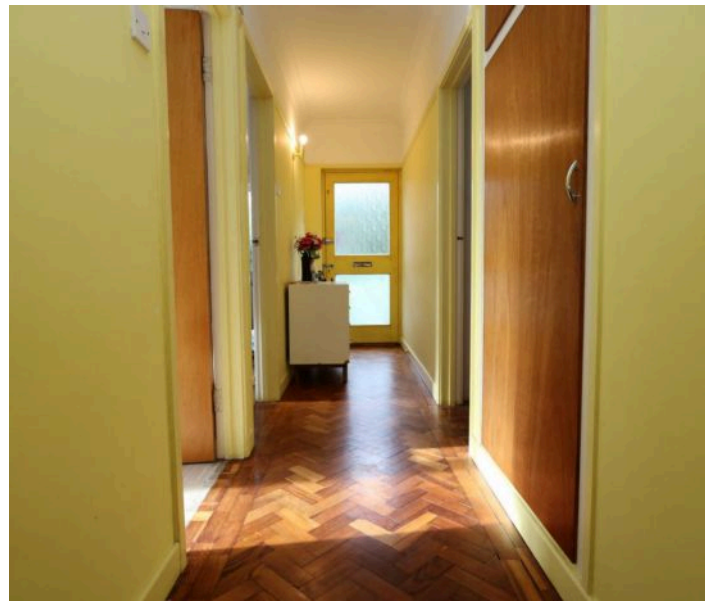
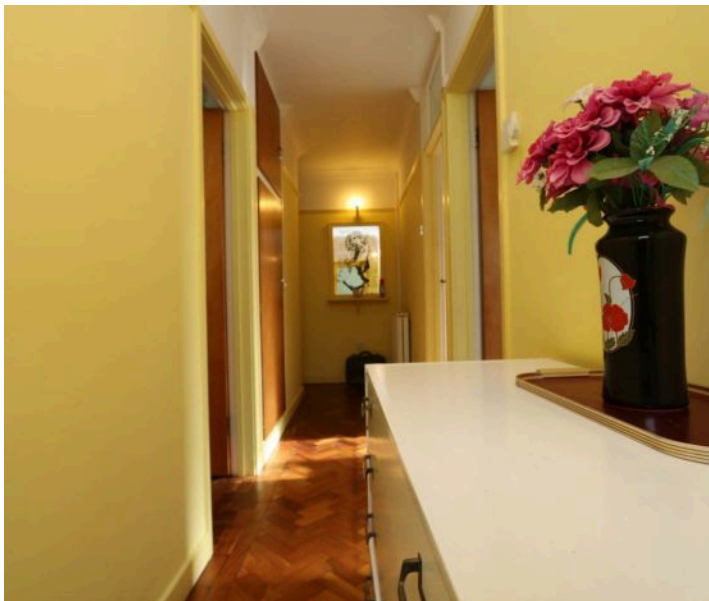
Council Tax band: TBD

Tenure: Freehold

EPC Energy Efficiency Rating: E

EPC Environmental Impact Rating: E

- TWO BEDROOM DETACHED BUNGALOW SET UPON A LARGE PLOT
- IN NEED OF MODERNISATION
- SPACIOUS KITCHEN/DINER
- LARGE LOUNGE
- SEPARATE BATHROOM AND WC
- REAL WOOD PARQUET FLOORING THROUGHOUT
- BOARDED LOFT PROVIDING AMPLE STORAGE
- EPC E51







### Hallway

Entrance into the property via a wooden front door with opaque glazing into an entrance hallway. The hallway has real wood parquet flooring, smooth walls and a smooth coved ceiling. The hallway is L-shaped and has doors leading off to the lounge, kitchen/diner, two bedrooms, a WC, a bathroom, and storage cupboards. There is also a radiator and loft access. The loft is fully boarded for storage.

### Lounge

13' 11" x 12' 1" (4.24m x 3.68m)

The lounge has real wood parquet flooring, smooth walls with picture rails and a smooth coved ceiling. There is an opaque side aspect window, a front aspect window and a radiator.

### Kitchen/Diner

13' 11" x 13' 9" (4.25m x 4.18m)

The kitchen/diner has tiled flooring, smooth walls with picture rails and a polystyrene coved ceiling. The kitchen comprises a selection of base level units with laminate worktops. There is a stainless steel sink inset with a stainless steel mixer tap over top. There is space for a freestanding cooker and fridge/freezer. There is a radiator, a double storage cupboard and a single storage cupboard. There is a side aspect window, a rear aspect window and a wooden glazed door giving access to a porch to the rear.

### Bedroom One

11' 9" x 10' 0" (3.58m x 3.04m)

Bedroom one has real wood parquet flooring, smooth walls with picture rails and a polystyrene coved ceiling. There is a front aspect window, a radiator and fitted wardrobes with sliding glass doors.





### Bedroom Two

10' 7" x 6' 1" (3.22m x 1.86m)

Bedroom two has real wood parquet flooring, smooth walls with picture rails and a smooth coved ceiling. There is a side aspect window, a radiator and built-in storage cupboards.

### Bathroom

6' 8" x 5' 11" (2.04m x 1.81m)

There is vinyl tile effect flooring, half-height wall tiling with the remainder of the walls being smooth and a smooth coved ceiling. There is a two-piece lime green suite comprising a pedestal washbasin with stainless steel mixer taps over top and a bath with stainless steel mixer taps and an electric shower inset. There is also an opaque rear aspect window and a radiator.

### WC

3' 11" x 2' 9" (1.19m x 0.85m)

The WC has vinyl flooring, smooth walls with picture rails and a smooth coved ceiling. There is an opaque window, a radiator and a WC.

### Rear Porch

7' 7" x 4' 0" (2.31m x 1.21m)

The porch has tiled flooring, windows to the rear aspect and a uPVC glazed door giving access to the rear. Open to a small utility room.

### Utility Room

4' 6" x 3' 11" (1.37m x 1.20m)

Tiled flooring, smooth walls and a smooth ceiling. A butler sink, workspace and shelving.







## **GARDEN**

The property benefits from a large wraparound garden with masses of potential. Largely laid to lawn, with areas of concrete. There is a pond, along with well established trees and shrubbery. There is also a potting shed and a storage shed.

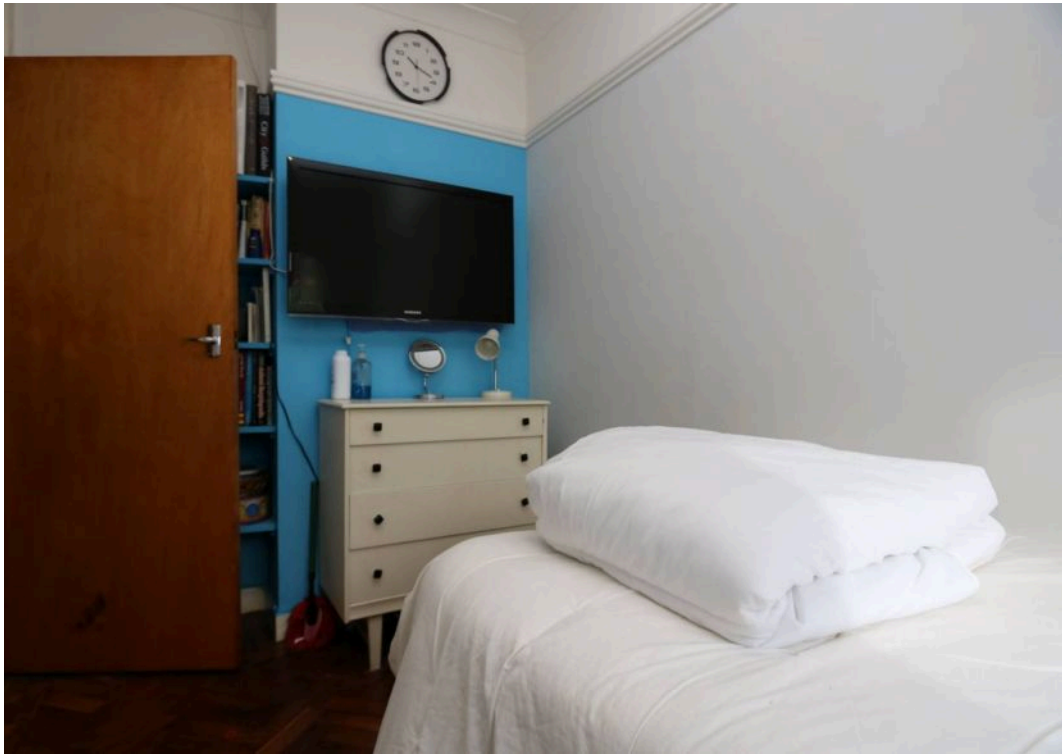
## **ON STREET**

1 Parking Space

Ample on street parking located to the front of the property.



























## Chris Davies Estate Agents

Chris Davies Estate Agents, 24 High Street – CF62 7EA

01446 700007

[barry@chris-davies.co.uk](mailto:barry@chris-davies.co.uk)

[www.chris-davies.co.uk/](http://www.chris-davies.co.uk/)

HELPFUL INFORMATION – whilst we try to ensure our sales particulars are complete, accurate and reliable, if there is any point which is particularly important, please ask and we will be happy to check it, including specific information in respect of commuting links, surroundings, noise, views, or condition. For security purposes, applicants who wish to view will need to provide their name, address and telephone number. All measurements are approximate to the widest and longest points. Buyers are advised to instruct a solicitor to obtain verification of tenure and a surveyor to check that appliances, installations and services are in satisfactory condition.