



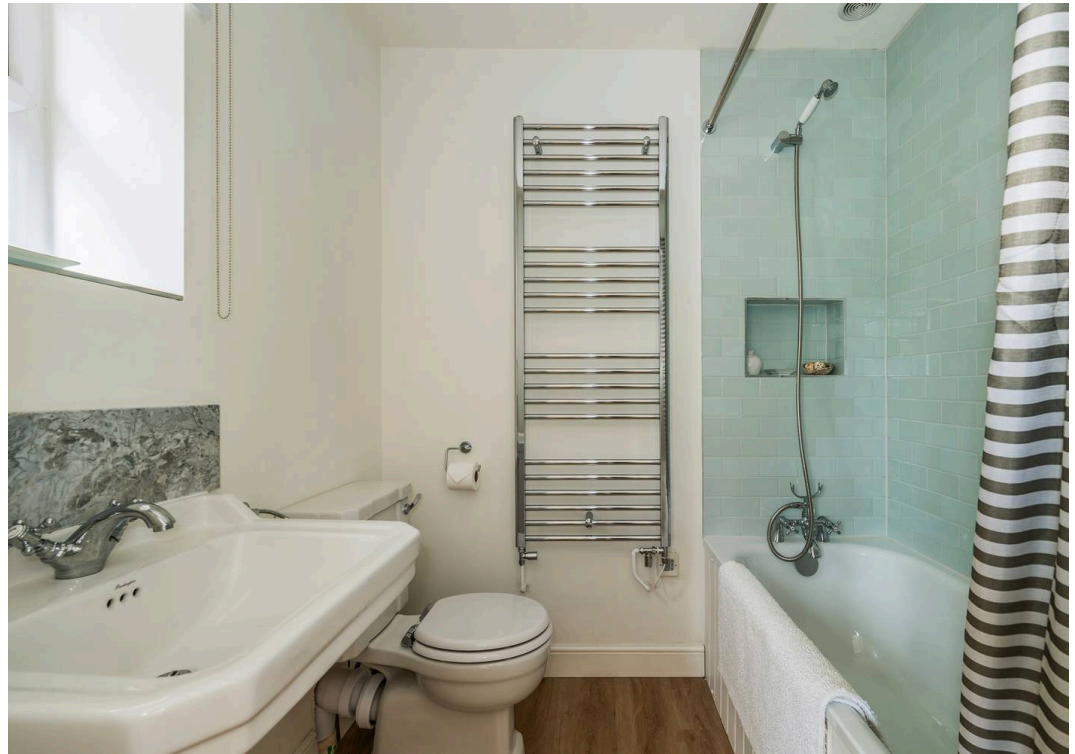
The Stables, Old Park Old Park Lane
£1,500 pcm

A beautifully presented two-bedroom home, blending contemporary style with timeless character, light-filled open-plan living and elegantly appointed interiors throughout.

Council Tax band: C

- Modern kitchen with integrated appliances
- Open plan living area
- En-suite bedroom
- Modern bathroom with heated towel rail
- Wooden flooring throughout
- Off-road parking (gravel driveway)
- Private residential location





The Stables, Old Park Lane, PO18 8AP

Approximate Gross Internal Area = 57.2 sq m / 616 sq ft

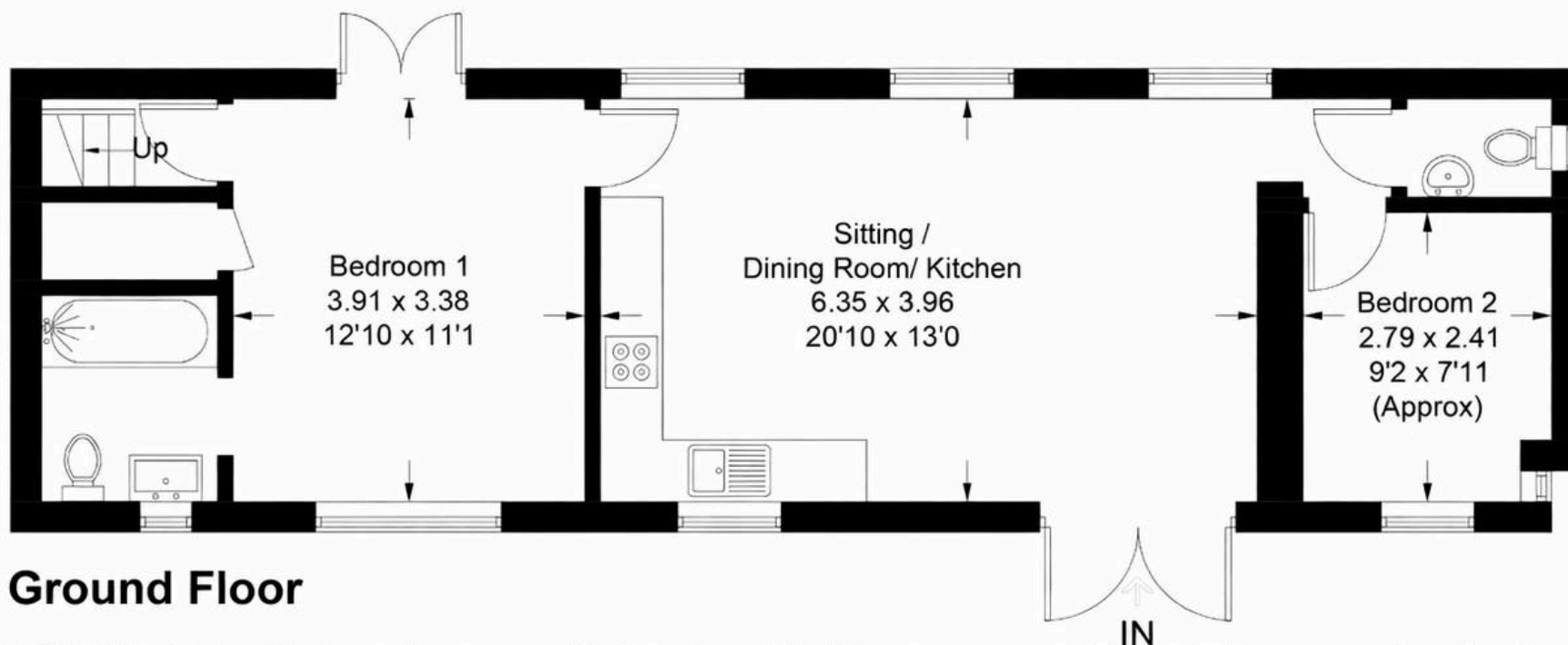
Loft = 11.7 sq m / 126 sq ft

Total = 68.9 sq m / 742 sq ft

Produced for Stride & Son Estate Agent.



 = Reduced head height below 1.5m



Ground Floor

Whilst every attempt has been made to ensure the accuracy of the floor plan contained here, measurements of doors, windows, rooms and any other items are approximate and no responsibility is taken for any error, omission or misstatement. This plan is for illustrative purposes only and should be used as such by any prospective



Stride & Son Lettings

Stride & Son, 37 South Street – PO19 1EL

01243782626 • lettings@strideandson.co.uk • <http://www.strideandson.co.uk>

This brochure is for guidance only and does not form part of any contract. While every effort is made to ensure accuracy, measurements, descriptions and details are approximate. Interested parties should carry out their own checks and inspections before making any decisions. Fixtures, fittings and appliances have not been tested and no warranty is given on their condition.