



FlaPark Valley, Nottingham  
£1,250 PCM

 **Comfort**  
Estates





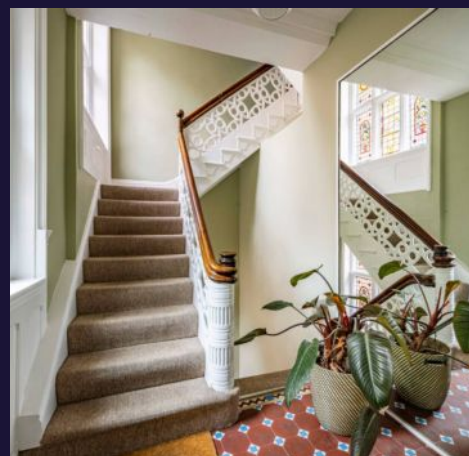
## Park Valley

### Nottingham

Stunning One-Bedroom Apartment in The Prestigious Park Estate – Available 1st April 2026. We are delighted to present this beautiful first-floor, one-bedroom apartment in the exclusive Park Estate, offering elegant living in a highly sought-after location.

The apartment features a spacious double bedroom, a bright and modern bathroom complete with a three-piece suite, and an open plan kitchen and living area designed for contemporary living. High ceilings create an airy and inviting atmosphere, while the fully fitted kitchen offers everything needed for day-to-day convenience. Beautiful period sash windows have been carefully restored and upgraded with double glazing throughout, improving energy efficiency while preserving the building's original character.

Situated within Nottingham's prestigious Park Estate, the property is just a stone's throw from a wide range of restaurants, independent cafés, shops and the historic Nottingham Castle, offering the perfect balance of peaceful surroundings and city centre convenience.







### **Lounge/Diner**

16' 2" x 12' 10" (4.93m x 3.90m)

A modern and spacious living and dining area which forms part of the open-plan layout, creating a versatile space that is ideal for both relaxing and entertaining. High ceilings enhance the sense of openness, while large windows flood the room with natural light throughout the day, giving the interior a bright and airy feel. Clean lines and a contemporary finish complete the space, resulting in a welcoming environment that feels both stylish and functional.

### **Kitchen**

13' 5" x 8' 8" (4.10m x 2.64m)

Forming part of the open plan living space, the kitchen is well equipped with everything you need. It features a range of wall and base units, ample worktop space and a freestanding island which provides additional preparation space and useful storage. Integrated appliances include a fridge, freezer, gas hob, oven and dishwasher, creating a practical and stylish kitchen ideal for everyday living and entertaining.

### **Bedroom**

15' 10" x 13' 6" (4.82m x 4.12m)

Bright and spacious double bedroom featuring a large wardrobe and a stunning bay window which floods the room with natural light. The generous proportions provide ample space for a bed and additional furniture, creating a comfortable and versatile room.



### **Bathroom**

8' 3" x 7' 0" (2.51m x 2.13m)

Modern bathroom fitted with a stylish wash basin set within a storage cabinet, P-shaped bath with shower over and WC. Neutrally decorated with contemporary grey tiling, creating a clean and modern finish.

### **Hallway**

15' 8" x 10' 6" (4.78m x 3.20m)

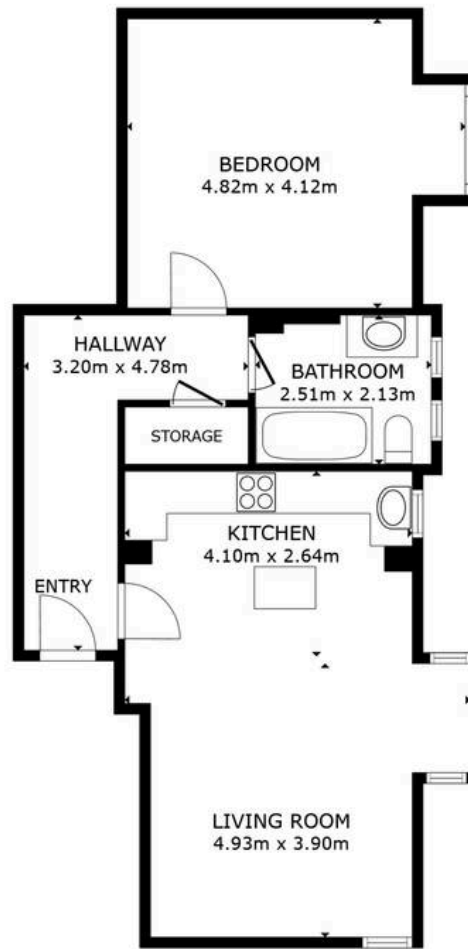
Spacious hallway featuring two built-in cupboards, one of which houses the washing machine while also providing practical shelving for additional storage.

### **Building Entrance**

A beautiful and characterful communal entrance featuring an original staircase with ornate detailing and a polished wooden handrail. The space showcases attractive tiled flooring and stunning stained glass windows, creating a bright and welcoming first impression while highlighting the building's period charm and original features.







FLOOR PLAN

GROSS INTERNAL AREA  
FLOOR PLAN 62.2 m<sup>2</sup>  
TOTAL : 62.2 m<sup>2</sup>

SIZES AND DIMENSIONS ARE APPROXIMATE, ACTUAL MAY VARY.





## Comfort Estates

Comfort Estates, 47 Derby Road - NG1 5AW

0115 9338997 • [info@comfortestates.co.uk](mailto:info@comfortestates.co.uk) • [www.comfortestates.co.uk](http://www.comfortestates.co.uk)