



**Larch Close, Attleborough NR17 2HB**

**welcome to**

## **Larch Close, Attleborough**

This well-laid-out two-bedroom bungalow offers two double bedrooms, a bright lounge with large windows and a wood burner, and a practical kitchen with space for appliances and access to the rear garden. The property also includes an entrance hall with storage, plus a garage and driveway.



## Description

This charming two-bedroom detached bungalow offers well-proportioned accommodation throughout, making it an ideal home for those seeking comfortable single-storey living. Both bedrooms are generous doubles.

The welcoming entrance hall includes a useful storage cupboard and benefits from an additional side entrance, adding convenience and practicality to the layout. The spacious lounge is a standout feature, filled with natural light thanks to its large windows and enhanced by a cosy wood-burning stove, creating a warm and inviting atmosphere all year round..

The kitchen is fitted with a range of wall and base units, offering good storage and worktop space, along with room for essential white goods. A door leads directly out to the rear garden.

Outside, the property benefits from a garage and driveway, providing secure parking and additional storage options. Well-laid-out and full of potential, this bungalow offers a comfortable and practical home with scope to personalise to your own taste.

## Entrance Hall

One of main entrances with front facing window and storage cupboard

## Kitchen/Diner

Space for white goods, cooker with extractor fan plenty of storage space with wall and base level units. Two large windows one to the front and one side complete with wood burner feature

## Bedroom One

Double bedroom with rear facing window and built in wardrobes

## Bedroom Two

Double bedroom with rear facing window and built in wardrobes

## Bathroom

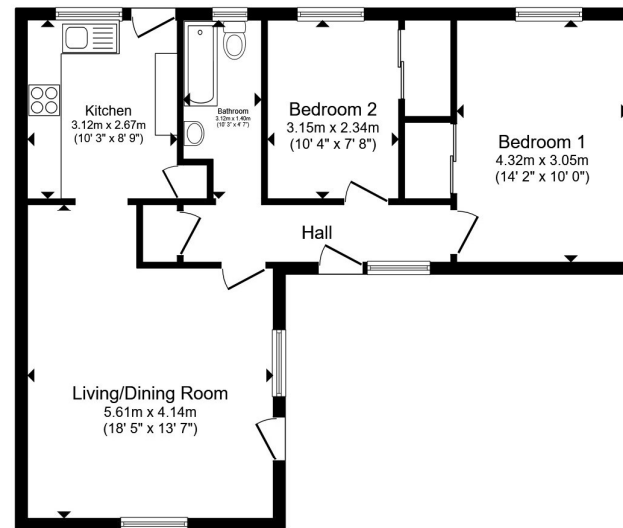
Bath with overhead shower, sink and W.C with rear facing window

## Front Garden

Garage and driveway with space for 2 cars and low maintenance lawn area

## Rear Garden

Lawn and patio area low maintenance, space for a shed or seating area



Floor Plan

Total floor area 66.1 m<sup>2</sup> (711 sq.ft.) approx

This floor plan is for illustrative purposes only. It is not drawn to scale. Any measurements, floor areas (including any total floor area), openings and orientation are approximate. No details are guaranteed, they cannot be relied upon for any purpose and they do not form part of any agreement. No liability is taken for any error, omission or misstatement. A party must rely upon its own inspection(s). Powered by [www.propertybox.io](http://www.propertybox.io)



**view this property online** [williamhbrown.co.uk/Property/ATB110151](http://williamhbrown.co.uk/Property/ATB110151)



welcome to

## Larch Close, Attleborough

- Guide Price £280,000 - £300,000
- Wood Burner Feature
- Spacious Double Bedrooms
- Garage & Driveway

Tenure: Freehold EPC Rating: D  
Council Tax Band: C

guide price

**£280,000**



Please note the marker reflects the  
postcode not the actual property

**view this property online** [williamhbrown.co.uk/Property/ATB110151](http://williamhbrown.co.uk/Property/ATB110151)



Property Ref:  
ATB110151 - 0002

1. MONEY LAUNDERING REGULATIONS Intending purchasers will be asked to produce identification documentation at a later stage and we would ask for your co-operation in order that there is no delay in agreeing the sale. 2. These particulars do not constitute part or all of an offer or contract. 3. The measurements indicated are supplied for guidance only and as such must be considered incorrect. Potential buyers are advised to recheck measurements before committing to any expense. 4. We have not tested any apparatus, equipment, fixtures or services and it is in the buyers interest to check the working condition of any appliances. 5. Where an EPC, or a Home Report (Scotland only) is held for this property, it is available for inspection at the branch by appointment. If you require a printed version of a Home Report, you will need to pay a reasonable production charge reflecting printing and other costs. 6. We are not able to offer an opinion either written or verbal on the content of these reports and this must be obtained from your legal representative. 7. Whilst we take care in preparing these reports, a buyer should ensure that his/her legal representative confirms as soon as possible all matters relating to title including the extent and boundaries of the property and other important matters before exchange of contracts.

William H Brown is a trading name of Sequence (UK) Limited which is registered in England and Wales under company number 4268443. Registered Office is Cumbria House, 16-20 Hockliffe Street, Leighton Buzzard, Bedfordshire, LU7 1GN. VAT Registration Number is 500 2481 05.



william h brown



**01953 452990**



[Attleborough@williamhbrown.co.uk](mailto:Attleborough@williamhbrown.co.uk)



Exchange Street, ATTLEBOROUGH, Norfolk,  
NR17 2AB



**[williamhbrown.co.uk](http://williamhbrown.co.uk)**