

Lot 25

Flat 1 Tomson House, St. Saviours Estate, Abbey Street, Southwark, London, SE1 3DJ



All enquiries Ref: Thomas Mason



- Leasehold ground and first self contained maisonette
- Full vacant possession

Location:

The property is located off Abbey Street at its junction with Riley Road. Public transport links are very well provided with Bermondsey London Underground Station (Jubilee Line) within close proximity, together with a network of local bus services serving the surrounding vicinity. An extensive range of activities, shops, bars, and restaurants can be found locally including the amenities and attractions of Bermondsey, Borough Market, The River Thames and London Bridge.

Accommodation:

First floor: Three bedrooms, shower room/WC
Ground floor: Reception room, kitchen, WC

EPC rating: C

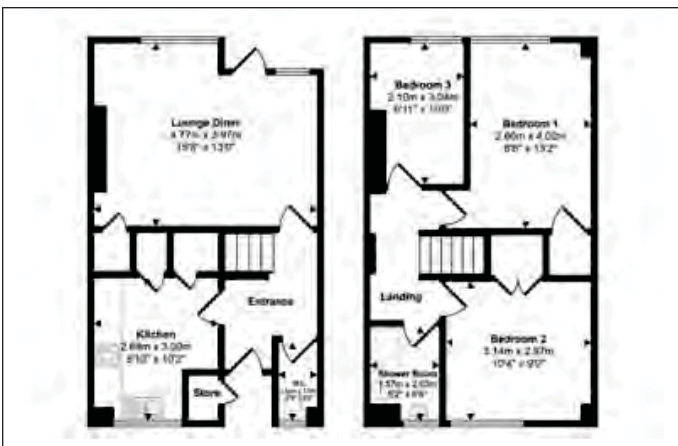
Council Tax Band: C

Lease:

Held on a lease for a term of 125 years from 5th March 1990 – for further information please refer to the legal documentation.

To view:

Strictly by arrangement with the auctioneer. Please see important advice for viewers on page 19 of this catalogue.



©Crown Copyright. Licence Number: ES 100020372