

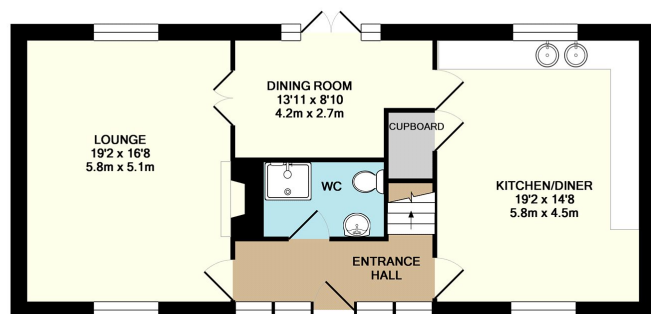


The Barn, Ashfield Court, Ditton Priors, BRIDGNORTH

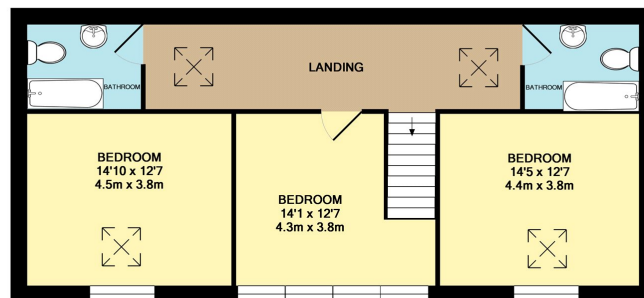
*Nock
Deighton*

The Barn, Ashfield Court, Ditton Priors, BRIDGNORTH, Shropshire, WV16 6TW

Offers Around £349,950



GROUND FLOOR
APPROX. FLOOR
AREA 828 SQ. FT.
(76.9 SQ.M.)



1ST FLOOR
APPROX. FLOOR
AREA 828 SQ. FT.
(76.9 SQ.M.)
TOTAL APPROX. FLOOR AREA 1655 SQ. FT. (153.8 SQ.M.)
NOT TO SCALE. FOR ILLUSTRATION ONLY.
Made with Metropix ©2014

An exceptional, newly converted, three bedroom barn conversion within the former farmstead of Ashfield Farm which is situated in the beautiful hills to the west of Ditton Priors which overlooks Corvedale to the north-west.

- 3 Bedrooms,
- Glazed entrance, Ground floor shower room,
- Spacious lounge,
- Second reception room,
- Large kitchen/ diner,
- Two bathrooms,
- Front & rear gardens,
- Parking
- No upward chain

Not only are these fabulous barns located within the Shropshire Hills Area of Outstanding Natural Beauty, but they are also steeped in history having once belonged to the large estates of the Lords Boyne, who still own Burwarton Hall to the south. Built in 1878, the farmstead is attributed to Wilfred Dodgson, their Land Agent – and the brother of Charles Dodgson, the real name of Lewis Carroll, an iconic figure in English literature.

Converted in 2011, this character barn is superbly presented and has been finished to the highest standard.

The Barn is denoted by its distinctively large glazed section which provides an impressive entrance on the ground floor and panoramic views from the central first floor bedroom.



A large glazed entrance leads into the hallway with guest cloaks/ shower room, and leads to both the spacious lounge with multi fuel burner & inglenook surround, and the large kitchen/ diner with range oven & hob and an array of integrated appliances. The kitchen has a useful understairs storage cupboard and also leads to further reception room with French doors leading to the rear courtyard. The entire ground floor benefits from oak flooring.

To the first floor there are 3 good size bedrooms and two bathroom suites. Bedroom one and two offer a built in double wardrobe and bedroom 3 offers a delightful full width window.

The large frontage is mainly laid to lawn with a large patio and path leading from the parking area to the front entrance.

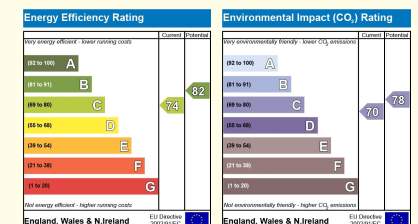
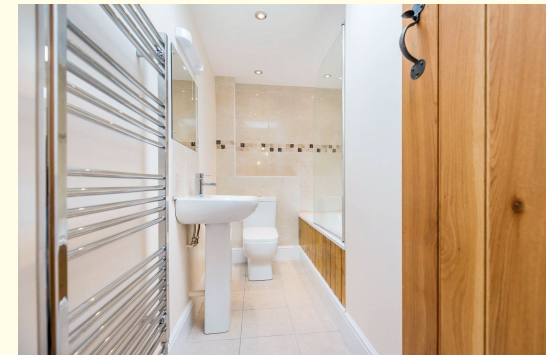
THE AREA: The charming village of Ditton Priors nestles under the north slope of the Brown Clee hill in a designated area of Outstanding Natural Beauty. The picturesque village centre surrounds the parish church which predominately dates back to the 13th Century. An affluent local community enjoys the benefit of excellent local amenities that include a butcher, a local inn, convenience store, doctor's surgery and school.

SERVICES: Mains water, electricity are connected. Treatment plant sewerage. Oil fired central heating.

LOCAL AUTHORITY: Shropshire Council - Council Tax Band E (may be subject to revision).

Directions

Directions- Heading out of village of Ditton Priors via Chapel Lane turn right into Hall Road. The road continues into Ashfield Road where after approx 1 mile Ashfield Court barns will be located on the left hand side as denoted by the Nock Deighton 'For Sale' board.



Old Smithfield 34 - 35 Whitburn Street, Bridgnorth WV16 4QN. Tel: 01746 767767

PROPERTY AGENTS . VALUERS . SURVEYORS . AUCTIONEERS
www.nockdeighton.co.uk

