



## Park Lane, Beaconsfield

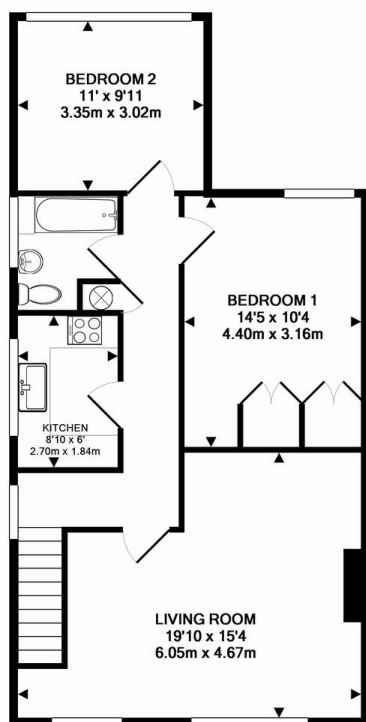
**£1,195 pcm**

A stunning two double bedroom first floor maisonette which is presented to a high standard throughout having been refurbished in recent years. It's located in a convenient position within easy reach of Beaconsfield Old and New Towns. Residents parking. Unfurnished. EPC Rating Is D. Available Now.

*Ashington Page*

[www.AshingtonPage.co.uk](http://www.AshingtonPage.co.uk)

LETTINGS & PROPERTY MANAGEMENT



TOTAL APPROX. FLOOR AREA 700 SQ.FT. (65.0 SQ.M.)

Whilst every attempt has been made to ensure the accuracy of the floor plan contained here, measurements of doors, windows, rooms and any other items are approximate and no responsibility is taken for any error, omission, or mis-statement. This plan is for illustrative purposes only and should be used as such by any prospective purchaser. The services, systems and appliances shown have not been tested and no guarantee as to their operability or efficiency can be given.  
Made with Metropix ©2015

### Features –

- 2 Double Bedrooms
- Well Presented
- Stunning Kitchen With Fitted Appliances
- Walking Distance Of New & Old Town
- Residents Parking
- Available Now

For an appointment to view this property, please contact  
Ashington Page Lettings on **01494 685 518**

Email [Lettings@ashingtonpage.co.uk](mailto:Lettings@ashingtonpage.co.uk)

4 Burkes Parade, Beaconsfield, Buckinghamshire, HP9 1NN

#### Agents Note

Whilst every care has been taken to prepare these sales particulars, they are for guidance purposes only. All measurements are approximate are for general guidance purposes only and whilst every care has been taken to ensure their accuracy, they should not be relied upon and potential buyers are advised to recheck the measurements

[www.AshingtonPage.co.uk](http://www.AshingtonPage.co.uk)

*Ashington Page*

LETTINGS & PROPERTY MANAGEMENT