

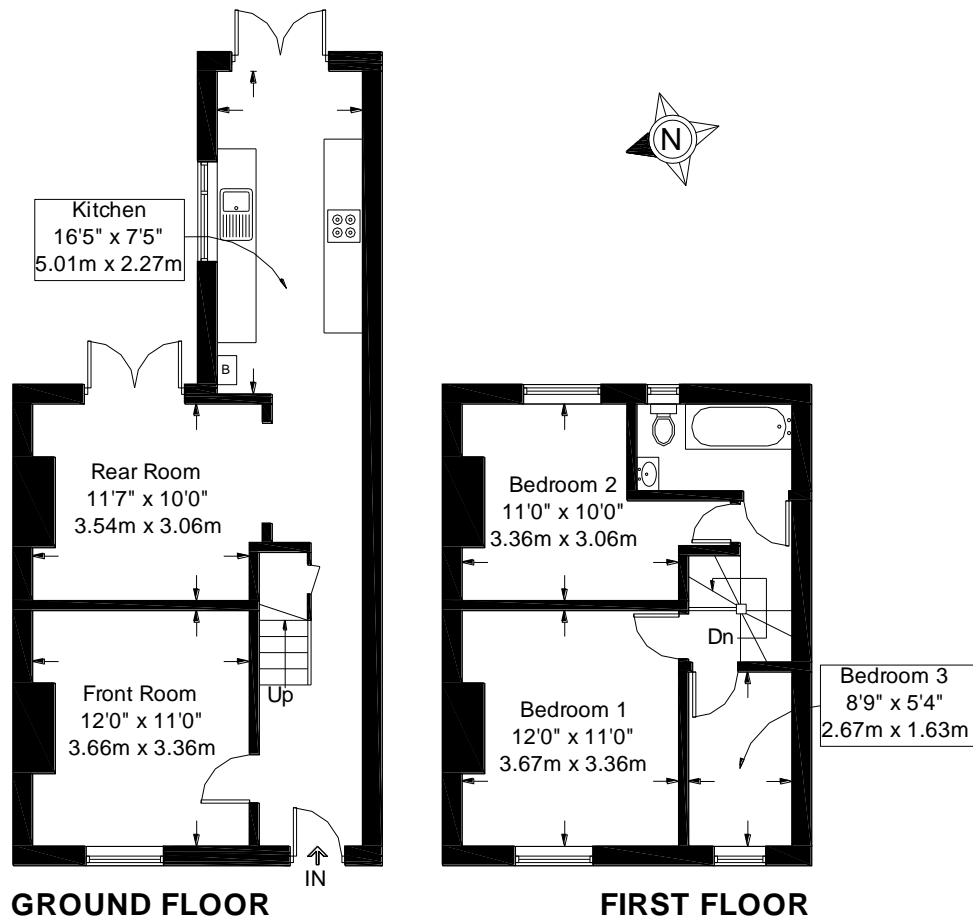
13 Windsor Street

Cheltenham, Gloucestershire GL52 2DG

readmaurice 



A recently refurbished and modernised period town house located north of central Cheltenham close to Pittville and within easy reach of most facilities.



A very well presented period town house with recently renovated accommodation arranged over two floors.

To the ground floor is an entrance hall, front room and great open plan living space incorporating a reception room and a modern fitted kitchen/breakfast room.

Upstairs there are two double bedrooms and a smaller third room together with a modern bathroom with a white suite.

Outside to the rear is a 45'x16' rear garden which is enclosed and laid to gravel for easy maintenance.

The property is heated by a gas fired system to radiators and features uPVC framed double glazed windows.

SORRY ... NO SHARERS, PETS or SMOKERS.

General

Services: all mains services are believed to be connected.

Local Authority: Cheltenham Borough Council.

Council Tax: Band C - £1477.07

EPC: D

13 Windsor Street, Cheltenham, Gloucestershire GL52 2DG
Approximate Gross Internal Area 883 sq ft / 82 sq m

These particulars, whilst believed to be accurate are set out as a general outline only for guidance and do not constitute any part of an offer or contract. Intending purchasers should not rely on them as statements or representation of fact, but must satisfy themselves by inspection or otherwise as to their accuracy. We have not carried out a detailed survey nor tested the services, appliances and specific fittings. Room sizes should not be relied upon for carpets and furnishings. The measurements given are approximate. No person in this firm's employment has the authority to make or give any representation or warranty in respect of the property.

readmaurice 

48 Andover Road, Cheltenham GL50 2TL
Tel: 01242 241122
Email: post@readmaurice.co.uk
www.readmaurice.co.uk