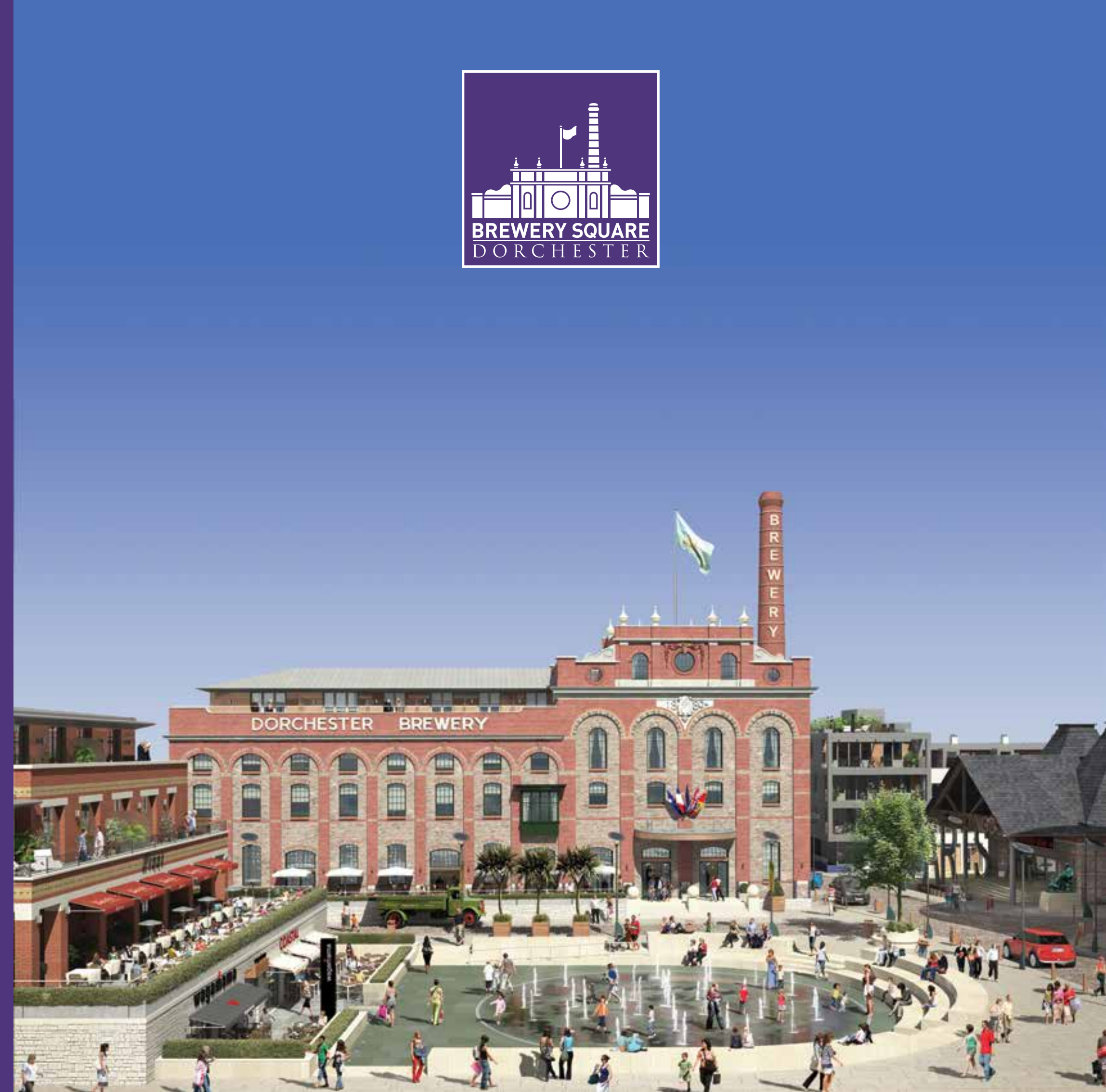




VISION

A VIBRANT NEW QUARTER IN THE HEART OF THE COUNTY TOWN

APARTMENTS
TOWN HOUSES
GARDEN SQUARES
SHOPS
RESTAURANTS
CAFÉS
CINEMA
THEATRE
HOTELS
SPA
HEALTH CENTRE
SOLAR POWERED STATION



DORCHESTER REDEFINED



LIFESTYLE





CARLUCCIO'S

Carluccio's

Carluccio's

Carluccio's

LIVE IN TOWN



WAITROSE

MARKS & SPENCER

POST OFFICE

TRINITY STREET

SOUTH STREET

PRINCE OF WALES ROAD

BREWERY SQUARE GARDENS

BREWERY SQUARE

WEYMOUTH AVENUE

DUKES AUCTION HOUSE

FAIRFIELD MARKET

MAUMBURY GARDENS

TAXI RANK

DORCHESTER SOUTH STATION

CONCIERGE

LOCAL BUSES

CAR HIRE

THE MARKET CAR PARK

POLICE STATION

FORGET THE CAR



1 ELDRIDGE POPE BUILDING



5 ATRIUM HEALTH CENTRE



6 SCREEN HOUSE



7 DORCHESTER BREWERY HOTEL & SPA



8 THE MALTINGS ARTS



9 THE COOPERAGE



10 HOP HOUSE



11 PREMIER INN



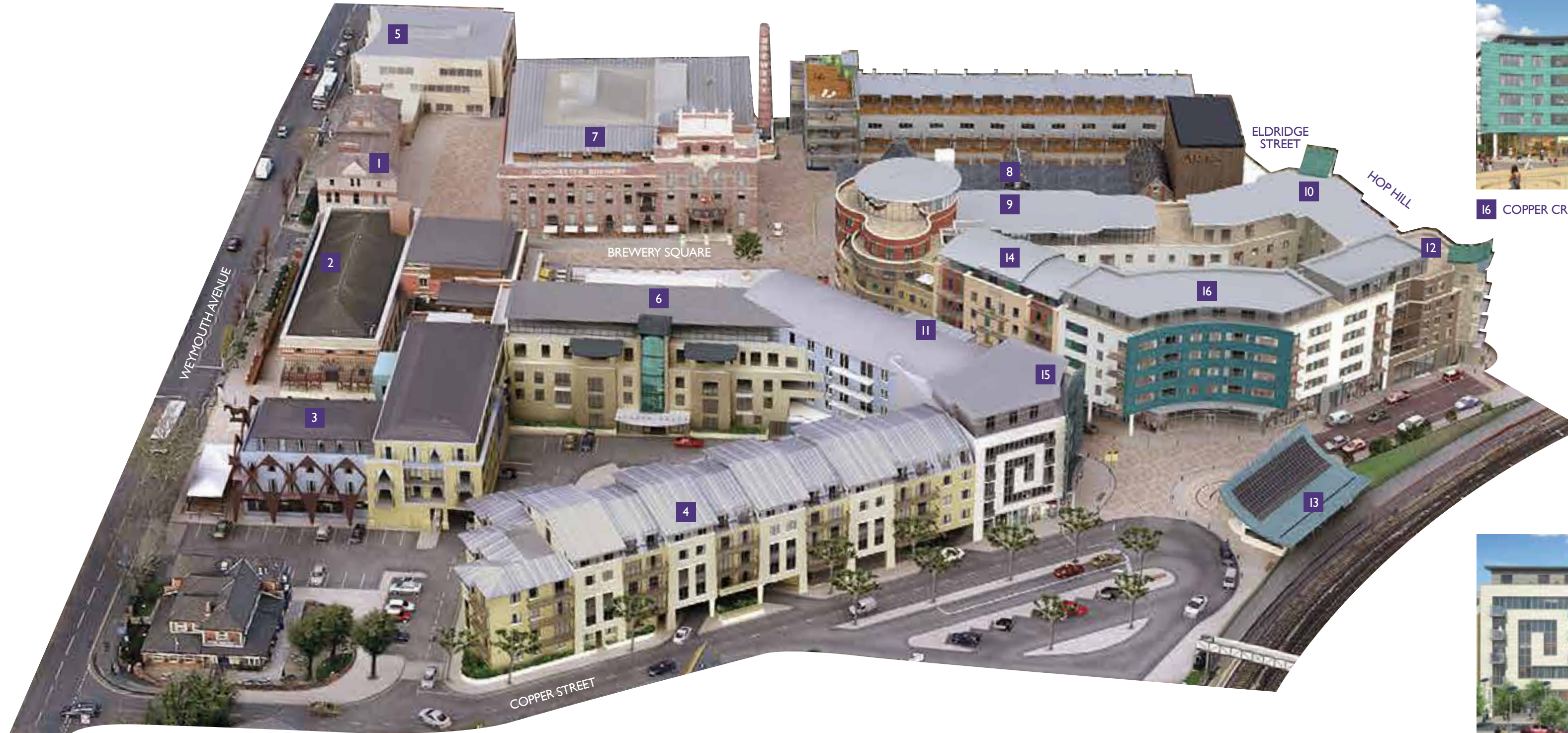
2 BONDED STORES



3 FAIRFIELD



4 SIGNATURE HOUSE



16 COPPER CRESCENT



12 THE BARLEY BUILDING



13 DORCHESTER SOUTH STATION



15 AMMONITE



14 KEG STORE

THE COOPERAGE



APARTMENTS:

Designed by CZWG,
with interiors by Conran & Partners;
1, 2 and 3 bedroom apartments & penthouses,
most with balconies or terraces,
all with secure basement parking.

THE KEG STORE



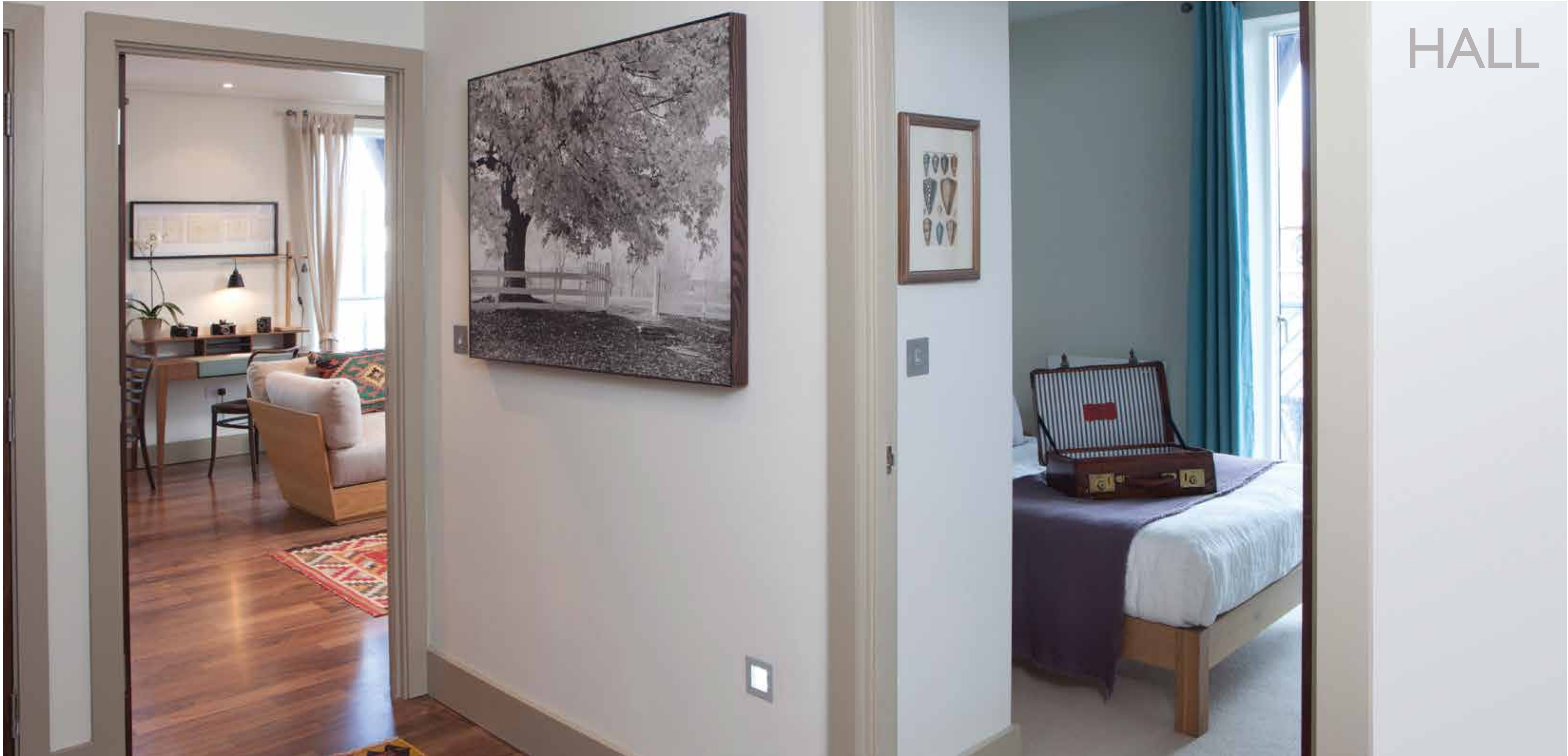
COPPER CRESCENT



BARLEY BUILDING



HALL



LIGHT



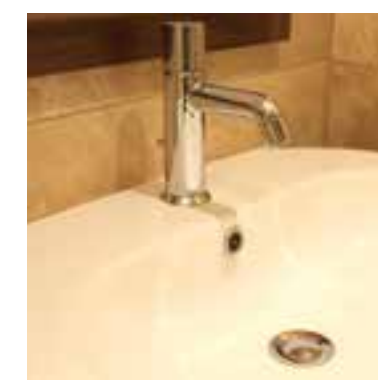
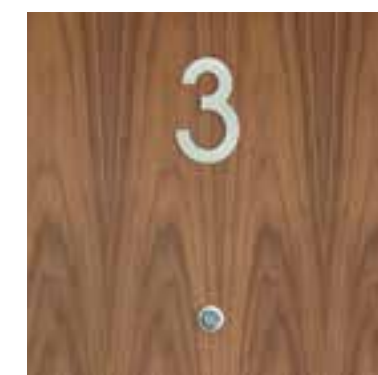
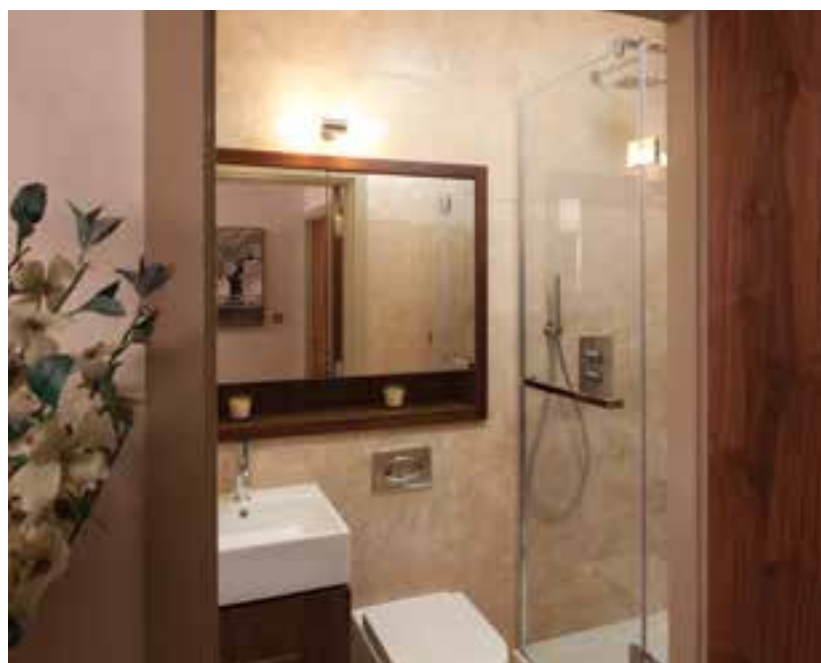
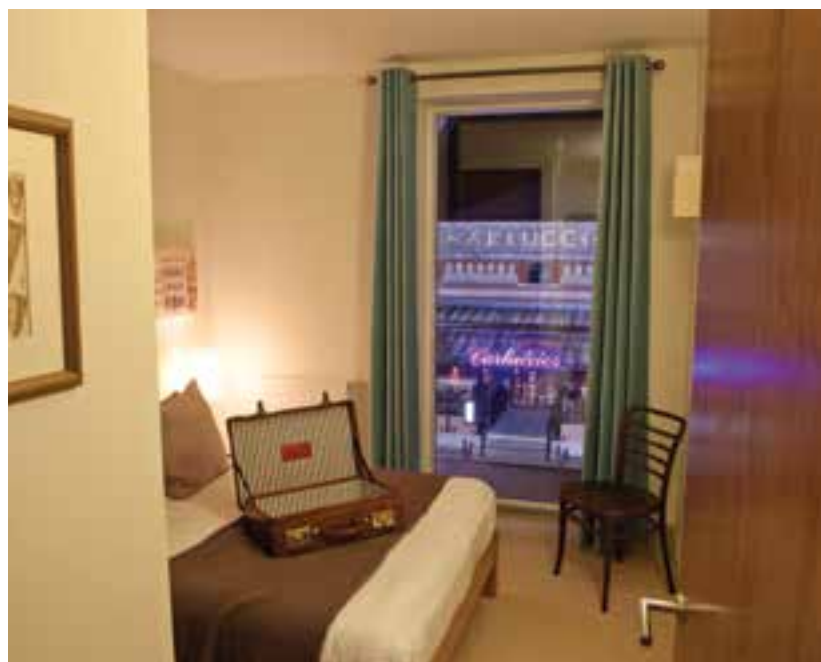
CHARACTER



HOME



DETAIL



“A man might as agreeably spend his time as well in Dorchester as in any town I know in England.”
Daniel Defoe “Tour Through the Whole Island of Great Britain” (1724-1726)

VIEWS



View from The Brewhouse

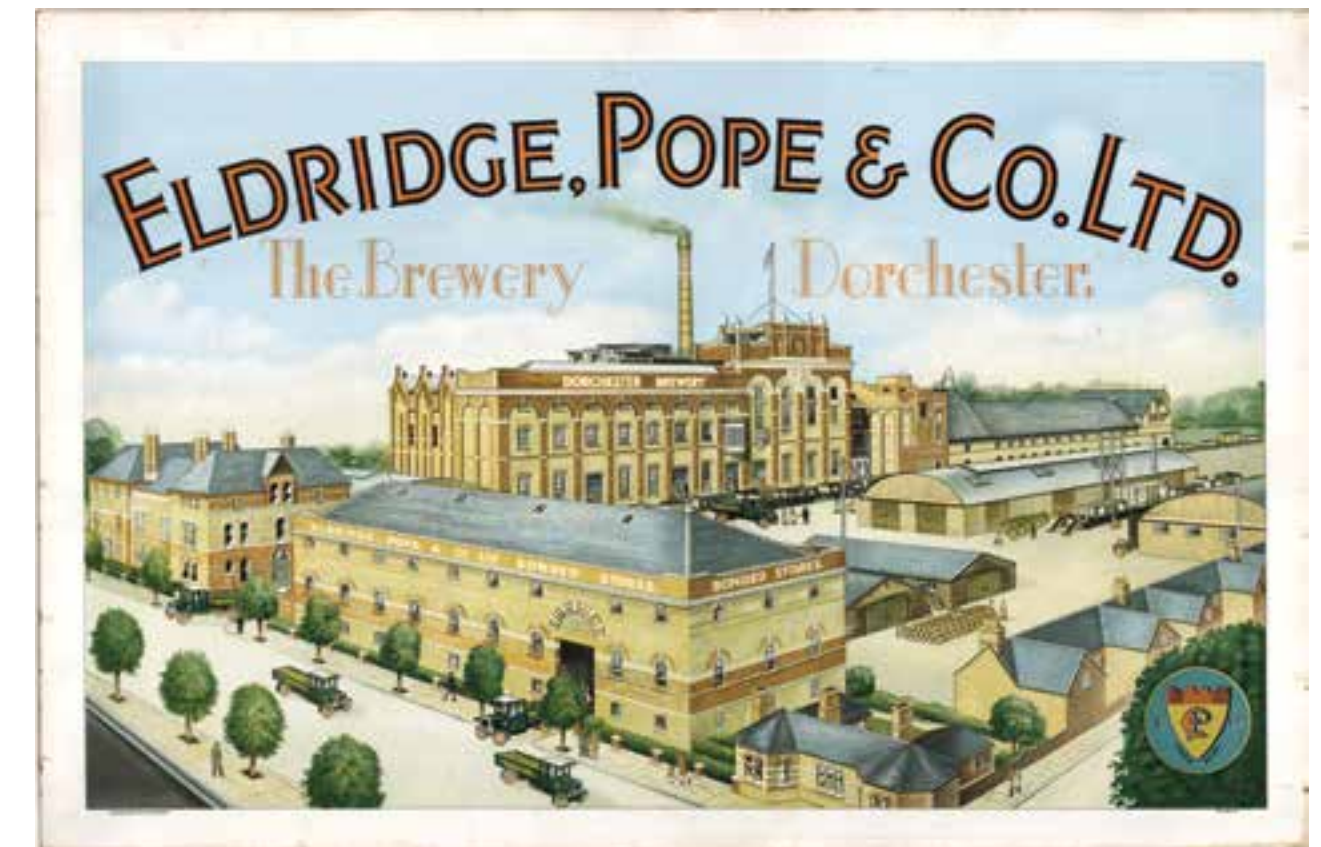
HERITAGE



Founded by Charles and Sarah Eldridge in 1833, the company built the Green Dragon Brewery in Dorchester in 1837. Soon after the Pope family bought into the business they acquired a much larger site from the then Prince of Wales. Throughout the remainder of the 19th and into the 20th century Eldridge Pope continued to thrive even after a fire in 1922 when much of the Brewhouse was destroyed. The present Brewhouse was rebuilt and reopened 2 years later.

The Victorian and Edwardian brewery buildings were designed in an exuberant style by W.R. Crickmay, for whom Thomas Hardy worked as an architect until 1872 when he became a full time writer:

Some of the architectural details suggest that perhaps too much beer may have been consumed at the drawing board!



"The Dorchester Brewery, which is certainly the finest specimen of architecture in the district, is an imposing structure combining the useful and the beautiful to an eminent degree."

Alfred Barnard, 1889



CONNECTED



DORCHESTER: APPROXIMATE JOURNEY TIMES

Location	Rail	Road
Weymouth (8 miles)	9 mins	20 mins
Poole (24 miles)	25 mins	30 mins
Bournemouth (30 miles)	40 mins	40 mins
Salisbury (40 miles)	2 hours	1 hour
Southampton (55 miles)	1 hour 20 mins	1 hour 15 mins
Winchester (60 miles)	1 hour 40 mins	1 hour 10 mins
Exeter (61 miles)	2 hours	1 hour 15 mins
Bath (62 miles)	1 hour 50 mins	1 hour 35 mins
Bristol (65 miles)	2 hour 20 mins	1 hour 45 mins
Central London (130 miles)	3 hour 15 mins	2 hour 45 mins



GREEN



WILL INCLUDE:

- 24 hour Concierge security
- Underground parking
- Restored listed Victorian buildings
- Four Star Dorchester Brewery Hotel
- Dorchester Spa & Swimming Pool
- The Fermenting Hall
- Thomas Hardy Hall
- Maltings Arts & Hardy Theatre
- Mash Tun Studio Theatre
- Dorchester Dance & Ballet School
- The Dorset Gallery
- Premier Inn
- Multi-jet fountain
- Winter ice rink
- Bronze dray horse
- Puffing clock chimney
- Nursing Home & close care apartments
- Cobbled streets
- Granite kerbs
- Poetry-in-the-pavements
- Recycled railway sleeper bollards
- Solar powered street lights
- Recycled timber & cast iron planters
- A spring water supply
- York stone paving
- Extensive landscaping

The new Dorchester South Station will be the first solar powered station in the UK. Brewery Square has its own spring water supply from the same source used by the brewery since 1880.



The Arum Street Light is a hybrid solar powered light designed by Sebastian Conran inspired by the Arum Lilly.



The bollards in Brewery Square are made from re-cycled railway sleepers with bronze logo tops.



The Brewery Square planters and street furniture are made from the original recycled timbers from the Victorian brewing vats.

TEAM

A REGENERATION PROJECT BY:
Waterhouse & Resolution Property

PROJECT MANAGERS
Peter Gunning & Partners

ARCHITECTS
CZWG
Conran & Partners

CIVIL ENGINEERS
Such Salinger Peters

PLANNING CONSULTANTS
Roger Tym & Partners

LANDSCAPE DESIGN
Conran & Partners
Anthony Paul Landscapes

STREET FURNITURE & LIGHTING
Sebastian Conran
Richard Eckford

BUILDING GUARANTEES
Premier Guarantee

SALES & MANAGING AGENTS
Savills

FINANCE
BLME

LAWYERS
Riseam Sharples
Stepien Lake
Hogan Lovells

MARKETING
Website & Brochure: Kohd.co.uk
Photography & Film: Seven Springs Studio
CGI images: Eye-Kon
Model Makers: Kelley Morgan

The Brewery Square chimney seen between Dorchester's two main church spires.



www.waterhouse.uk.com

Founded by Andrew Wadsworth and Robert Ackland in 1980, Waterhouse specialises in creative urban regeneration projects involving the restoration and re-use of listed buildings and innovative mixed use new build projects.

Completed schemes include the Horselydown Brewery, New Concordia Wharf, China Wharf, The Circle and Little London, all near Tower Bridge, and The Todd Building and No.1 Albion Street, a listed Grade A hotel and retail scheme in Trongate, Glasgow.

RESOLUTION

P R O P E R T Y

www.resolutionproperty.com

With an investor base of some of the foremost US endowments and foundations, and leading European institutional and private equity investors, Resolution Property, founded in 1998, has current assets under management of in excess of €1.6bn across all real estate sectors and various geographic territories.

THE ARCHITECTS AND DESIGNERS



Piers Gough CBE
CZWG Architects

Piers Gough master-planned Brewery Square and with Sanjiv Gohil, a partner in the practice, they have designed 23 new buildings in the scheme including the new Dorchester South Station.



Sir Terence Conran
Conran & Partners

Sir Terence Conran's internationally acclaimed architectural practice has been responsible for the conversion design of the listed buildings at Brewery Square, hard landscaping and interior design / specification of the apartments.



Anthony Paul
Landscape Design

Anthony Paul has been designing landscapes around the world for 30 years and is internationally recognised for his innovative and contemporary gardens.



Richard Eckford
Street Furniture

Richard Eckford trained as a graphic designer but has gone on to become a renowned furniture designer. His use of recycled timber has resulted in innovative designs for Brewery Square.



Sebastian Conran
Associates

Sebastian's design for the Arum Solar Street Light is another of his product innovations and inventions. His work in a variety of fields has been awarded many design awards.



Ben de Lisi
Bathroom Design

The Ben de Lisi Bathrooms encapsulate his design philosophy that design should be low key, chic, understated but rich in detail.



BEAUTIFULLY DESIGNED APARTMENTS
IN THE HEART OF DORCHESTER



FOR LATEST NEWS & UPDATES FOLLOW
BREWERY SQUARE
ON FACEBOOK AND TWITTER

IMPORTANT NOTICE: The Brewery Square Development Company Limited and Savills, their clients and any joint agents give notice that: 1. They are not authorised to make or give any representations or warranties in relation to the property either here or elsewhere, either on their own behalf or on behalf of their client or otherwise. They assume no responsibility for any statement that may be made in these particulars. These particulars do not form part of any offer or contract and must not be relied upon as statements or representations of fact. 2. Any areas, measurements or distances are approximate. The text, images and plans are for guidance only and are not necessarily comprehensive. It should not be assumed that the property has all necessary planning, building regulation or other consents and Savills has not tested any services, equipment or facilities. Purchasers must satisfy themselves by inspection. Designed and produced by kohd.co.uk April 2013.



www.waterhouse.uk.com

Founded by Andrew Wadsworth and Robert Ackland in 1980, Waterhouse specialises in creative urban regeneration projects involving the restoration and re-use of listed buildings and innovative mixed use new build projects.

Completed schemes include the Horselydown Brewery, New Concordia Wharf, China Wharf, The Circle and Little London, all near Tower Bridge, and The Todd Building and No.1 Albion Street, a listed Grade A hotel and retail scheme in Trongate, Glasgow.

RESOLUTION

P R O P E R T Y

www.resolutionproperty.com

With an investor base of some of the foremost US endowments and foundations, and leading European institutional and private equity investors, Resolution Property, founded in 1998, has current assets under management of in excess of €1.6bn across all real estate sectors and various geographic territories.

THE ARCHITECTS AND DESIGNERS



Piers Gough CBE
CZWG Architects

Piers Gough master-planned Brewery Square and with Sanjiv Gohil, a partner in the practice, they have designed 23 new buildings in the scheme including the new Dorchester South Station.



Sir Terence Conran
Conran & Partners

Sir Terence Conran's internationally acclaimed architectural practice has been responsible for the conversion design of the listed buildings at Brewery Square, hard landscaping and interior design / specification of the apartments.



Anthony Paul
Landscape Design

Anthony Paul has been designing landscapes around the world for 30 years and is internationally recognised for his innovative and contemporary gardens.



Richard Eckford
Street Furniture

Richard Eckford trained as a graphic designer but has gone on to become a renowned furniture designer. His use of recycled timber has resulted in innovative designs for Brewery Square.



Sebastian Conran
Associates

Sebastian's design for the Arum Solar Street Light is another of his product innovations and inventions. His work in a variety of fields has been awarded many design awards.



Ben de Lisi
Bathroom Design

The Ben de Lisi Bathrooms encapsulate his design philosophy that design should be low key, chic, understated but rich in detail.



WEYMOUTH AVENUE



ELDRIDGE STREET



BREWERY SQUARE



COPPER CRESCENT



COPPER STREET



DRAY HORSE YARD



ELDRIDGE MEWS



POPE STREET



MAUMBURY GARDENS



BITTER END



IMPORTANT NOTICE: The Brewery Square Development Company Limited and Savills, their clients and any joint agents give notice that: 1. They are not authorised to make or give any representations or warranties in relation to the property either here or elsewhere, either on their own behalf or on behalf of their client or otherwise. They assume no responsibility for any statement that may be made in these particulars. These particulars do not form part of any offer or contract and must not be relied upon as statements or representations of fact. 2. Any areas, measurements or distances are approximate. The text, images and plans are for guidance only and are not necessarily comprehensive. It should not be assumed that the property has all necessary planning, building regulation or other consents and Savills has not tested any services, equipment or facilities. Purchasers must satisfy themselves by inspection. Designed and produced by kohd.co.uk April 2013.



A regeneration project by
waterhouse &
RESOLUTION
P R O P E R T Y

The Marketing Suite
21 Weymouth Avenue
Dorchester DT1 1QR

01305 757000
brewerysquare.com