

# HAMPSTEAD HIGH STREET

## LONDON NW3

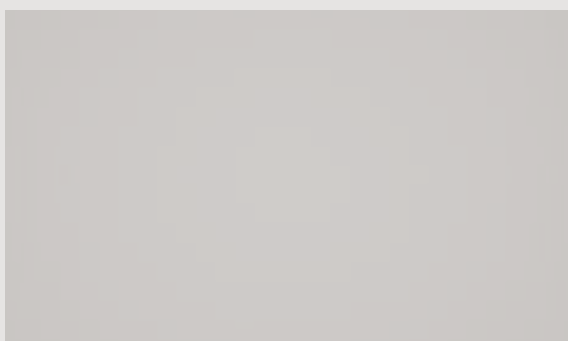
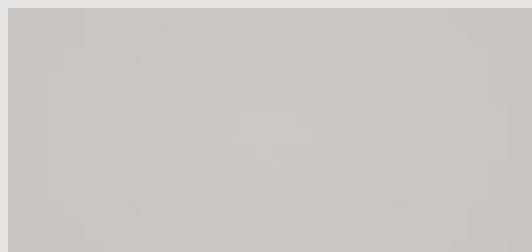
Newly refurbished loft-style apartments in the centre of Hampstead Village

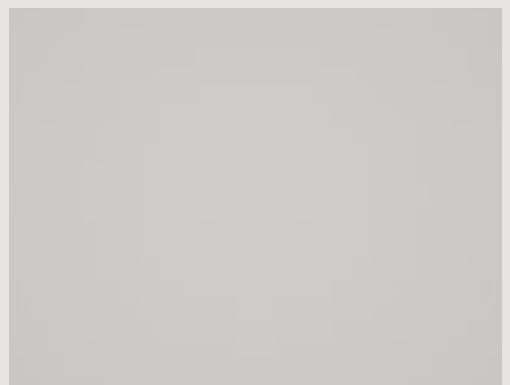
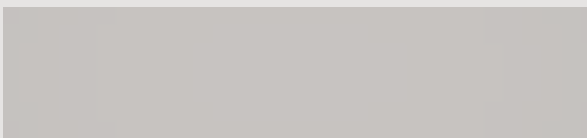
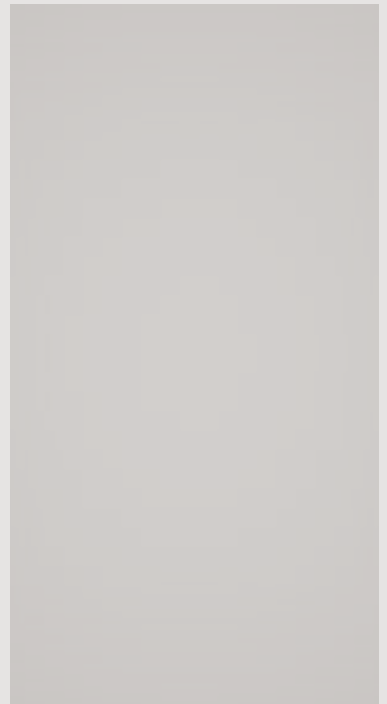
THIS IS AN EXCITING SCHEME OF FIVE BRAND NEW APARTMENTS, LOCATED IN THE HEART OF HAMPSTEAD VILLAGE.

The apartments are presented in immaculate condition and have been finished to an exacting standard. Each apartment has an open-plan reception room and kitchen, two bedrooms and two bath/shower rooms as well as bespoke built wardrobes, creating ample storage. All the apartments have a private decked terrace or balcony and spectacular far reaching views across London. There is also the added benefit of gated, off-street parking which is rare for such a central village location.

Please note the photographs are taken from a selection of the entire scheme.

Price upon application.

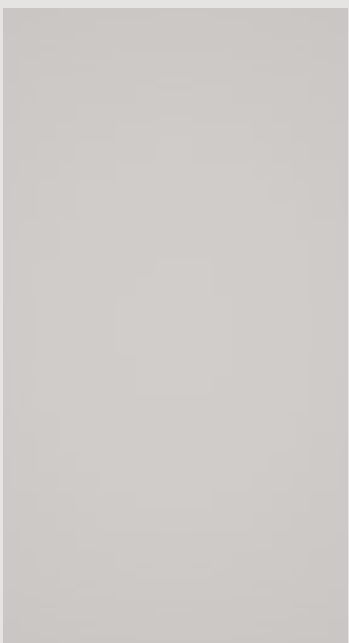
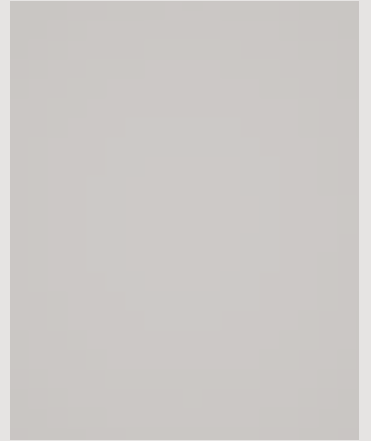






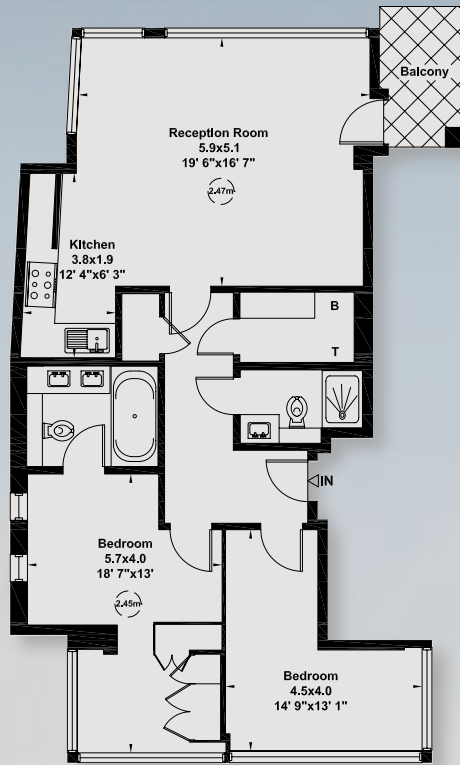


This development of luxury flats is conveniently situated on Hampstead High Street, approximately 100 metres from Hampstead Underground Station and moments away from the local cafés, restaurants and shops of the Village. The green, open spaces of Hampstead Heath are approximately 500 metres away.



Gross internal area (approx.)  
92 sq m (995 sq ft)

Gross internal area (approx.)  
98 sq m (1,055 sq ft)



Fourth Floor

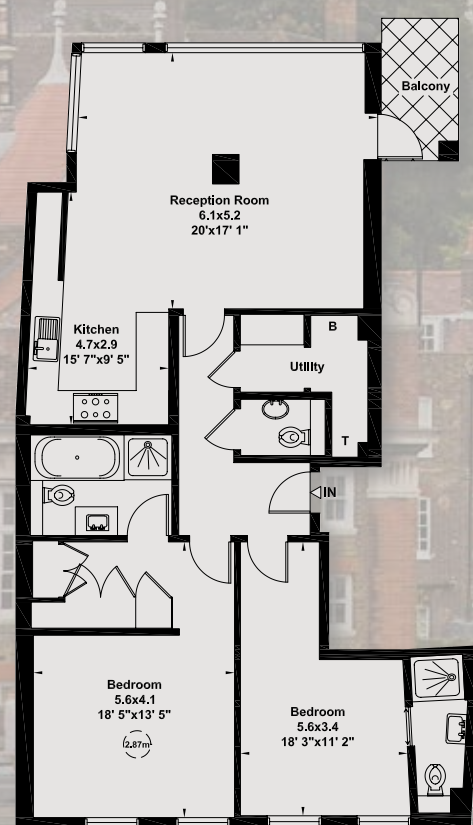
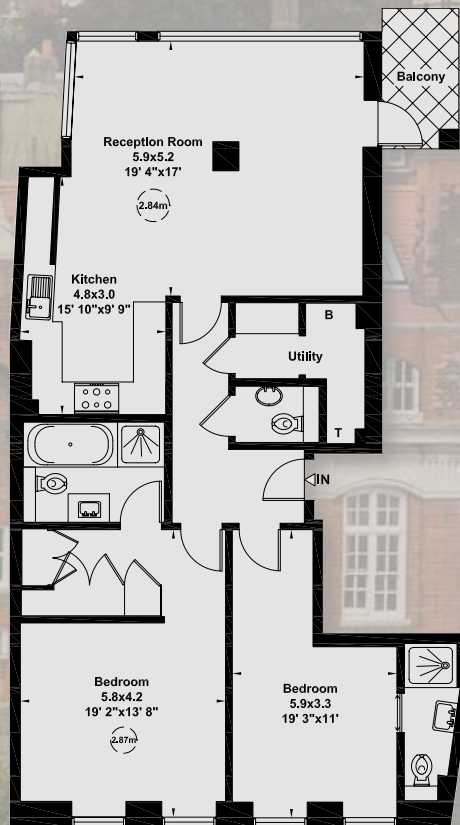
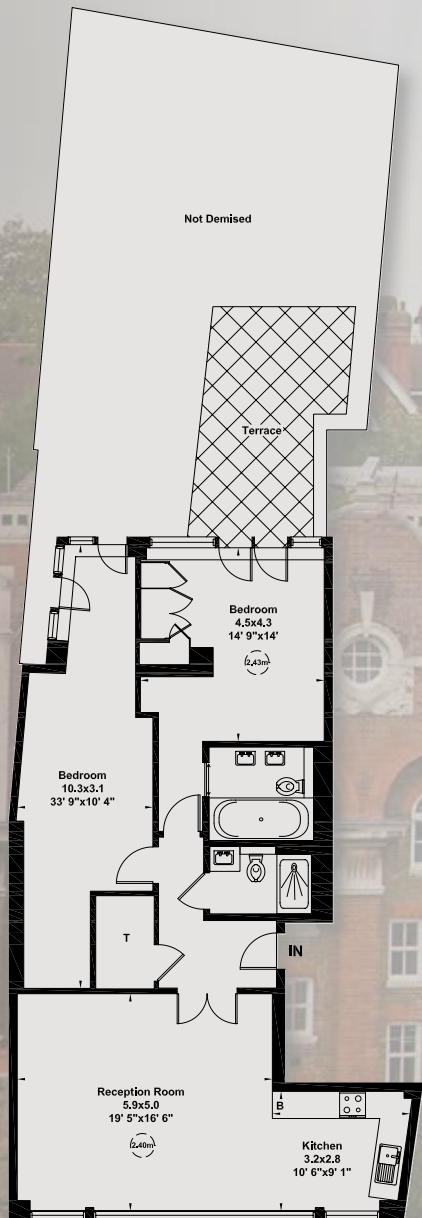
Fifth Floor

**SOLD**

Gross internal area (approx.)  
105 sq m (1,134 sq ft)

Gross internal area (approx.)  
108 sq m (1,157 sq ft)

Gross internal area (approx.)  
105 sq m (1,132 sq ft)



First Floor

Second Floor

Third Floor



# SPECIFICATION

## KITCHENS

- Fully fitted bespoke kitchens, marble worktops
- Neff appliances
- Antique glass splashbacks

## BATHROOMS

- Samuel Heath/Crosswater/Crystal sanitary ware
- Marble/porcelain tiled floors and walls
- Marble bath and sink tops

## LIGHTING, AUDIO/VISUAL

- CAT 5 wiring throughout
- Video entry system

## HEATING

- Underfloor heating throughout and individual thermostats in each room

## SECURITY

- Each apartment has Banham locks
- All the flats are wired for burglar alarms and PIR's

## UTILITY

- The second, third and fourth floor flats have separate utility rooms

## OTHER

- Bespoke joinery throughout
- Timber flooring to receptions and bedrooms
- Buster and Punch light fittings
- Double/ triple glazed windows
- Each apartment has Banham locks

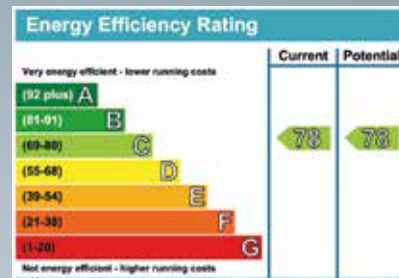
## OUTDOOR SPACE

- All apartments have a private outdoor decked terrace or balcony

## PARKING

- Secure gated off-street parking

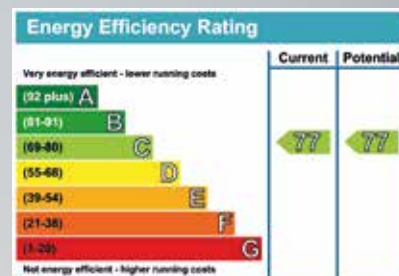
## Flat 1



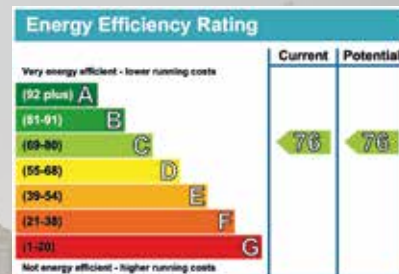
## Flat 2



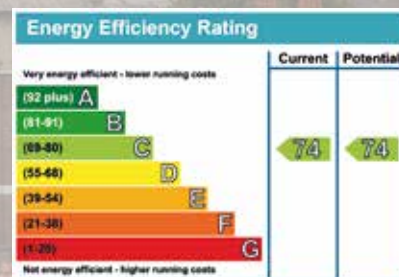
## Flat 3



## Flat 4



## Flat 5



Viewing: Strictly by appointment with Savills and Arlington Residential.

### Important notice

Savills, Arlington Residential and their clients give notice that: 1: They are not authorised to make or give any representations or warranties in relation to the property either here or elsewhere, either on their own behalf or on behalf of their client or otherwise. They assume no responsibility for any statement that may be made in these particulars. These particulars do not form part of any offer or contract and must not be relied upon as statements or representations of fact. 2: Any areas, measurements or distances are approximate. The text, photographs and plans are for guidance only and are not necessarily comprehensive. It should not be assumed that the property has all necessary planning, building regulation or other consents and neither Savills nor Arlington Residential have tested any services, equipment or facilities. Purchasers must satisfy themselves by inspection or otherwise. 15/10/07 PB 329873

Brochure and Photography by **capitalgroup** 020 8671 5448

Savills Hampstead  
7 Perrin's Court  
London NW3 1QS  
020 7472 5000  
savills.co.uk

*Arlington*  
RESIDENTIAL  
— SALES & LETTINGS —  
020 7722 3322  
ARLINGTONRESIDENTIAL.COM