

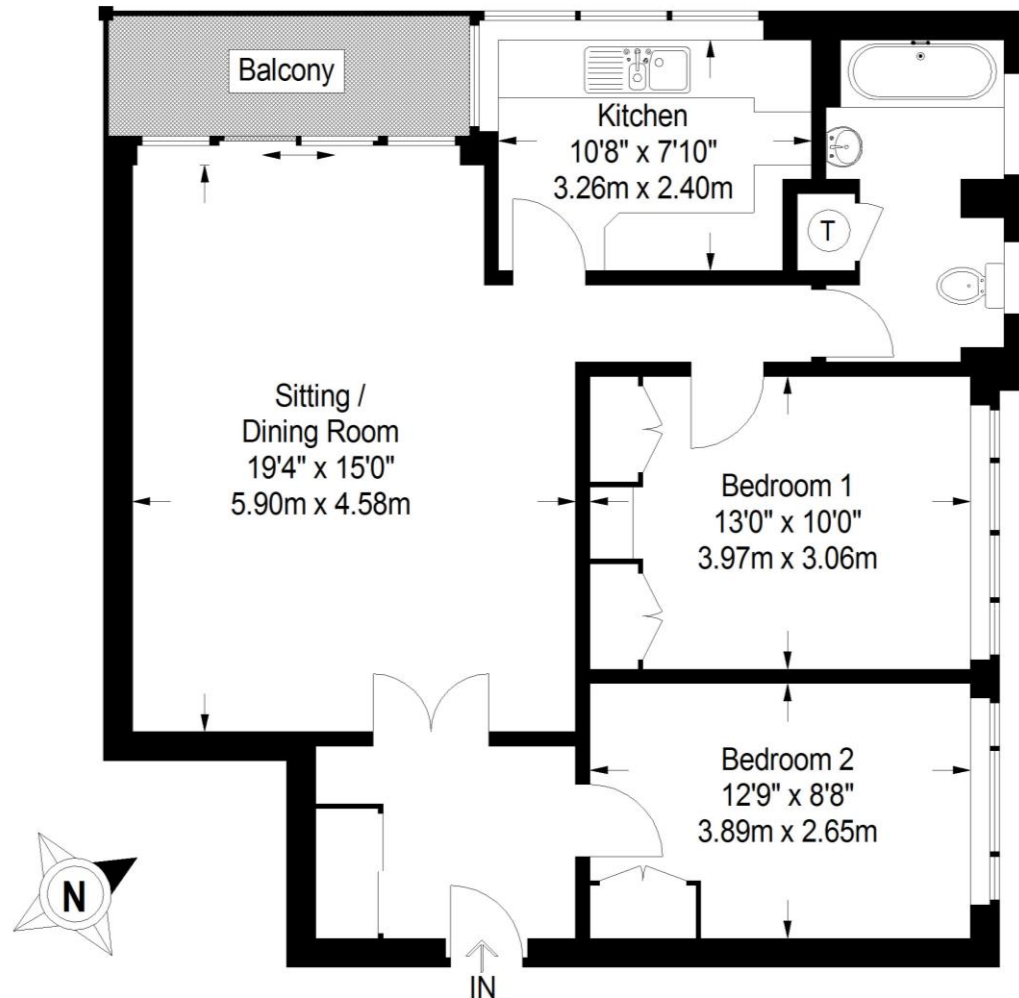
7 Pittville Court

Albert Road, Pittville, Cheltenham, GL52 3JA

readmaurice 



Overlooking the open spaces of Pittville Park this bright balcony flat offers spacious accommodation which is well-presented.



A fantastic third floor flat with far reaching views over Pittville Park from its west facing balcony.

The property is accessed through well-presented communal areas by either a lift or staircase. The front door leads into a good sized reception hall with cloak cupboard and glazed double doors which open into a spacious sitting / dining room. To one end of the room are sliding glazed doors leading to a balcony which attracts the late afternoon and evening sun. Off the sitting room is a fitted kitchen again with views over Pittville Park and a hallway which leads to the main bedroom and the enlarged bathroom fitted with a white suite and having two windows. The second double bedroom is located off the entrance hall.

ACCOMMODATION:

Entrance hall, large sitting room, balcony, kitchen, 2 bedrooms and bathroom.

ADDITIONAL:

Electric heating

Unfurnished

Parking is available on a first come first serve basis

INCLUDED:

Electric cooker

TERM:

12 month minimum term. Sorry no sharers. Full time employment only. No pets allowed

General

Services: All mains services connected excluding gas.

Local Authority: Cheltenham Borough Council

EPC: TBC

Council Tax: Band C - £1558.47

7 Pittville Court, Albert Road, Pittville, Cheltenham, GL52 3JA

Approximate Gross Internal Area 796 sq ft / 74.0 sq m

These particulars, whilst believed to be accurate are set out as a general outline only for guidance and do not constitute any part of an offer or contract. Intending purchasers should not rely on them as statements or representation of fact, but must satisfy themselves by inspection or otherwise as to their accuracy. We have not carried out a detailed survey nor tested the services, appliances and specific fittings. Room sizes should not be relied upon for carpets and furnishings. The measurements given are approximate. No person in this firm's employment has the authority to make or give any representation or warranty in respect of the property.

readmaurice 

48 Andover Road, Cheltenham GL50 2TL

Tel: 01242 241122

Email: post@readmaurice.co.uk

www.readmaurice.co.uk