



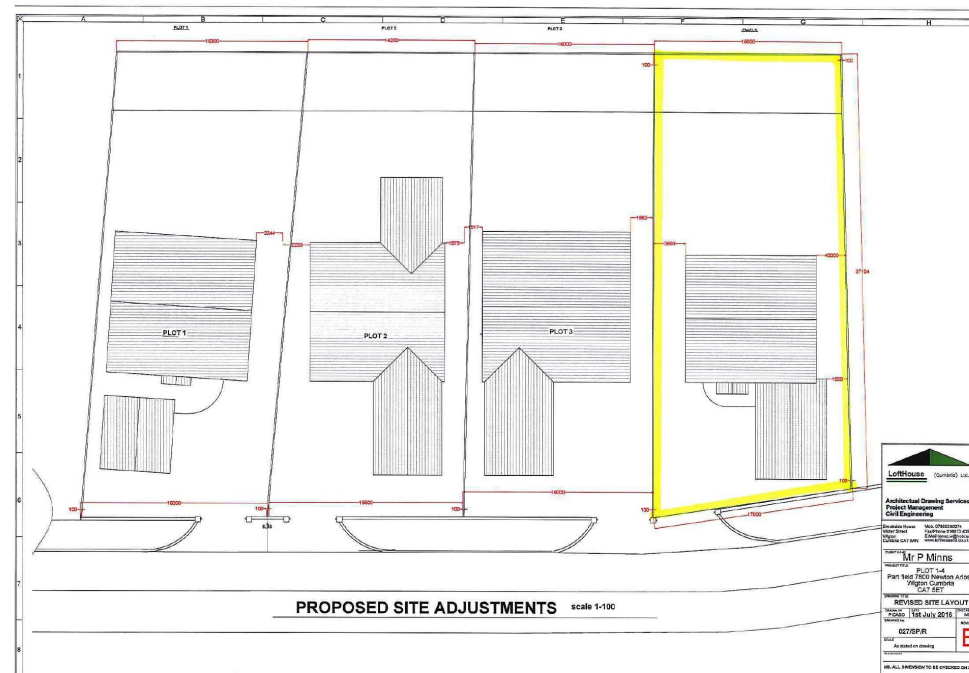
SERVICED BUILDING PLOT with planning permission for the construction of a 4 bed detached house. Spacious dining kitchen, large lounge, snug, study and utility room. Double garage. RURAL VILLAGE. Convenient for Solway Coast. Carlisle 14 miles. Wigton 8.5 miles. Keswick 26 miles. For more information please visit Allerdale website - planning reference number 2/2014/0212.

**Situation** The plot is located within the rural settlement of Newton Arlosh less than 3 miles from the village of Kirkbride where a range of amenities are available including a shop and primary school. Wigton is 7.5 miles and the regional capital Carlisle is just 14 miles. The village is just a short distance from the Solway coast and there is convenient access for the beaches of west Cumbria and the Lake district.

**Plot size** Approximate dimensions - frontage 15m to 14.5m rear. Depth 35m.

**Directions** In Newton Arlosh, proceed past the church on your right. The building plot is a little way along on the left.

All descriptions, dimensions, floor plans, references to condition, occupation and other details are given in good faith and are believed to be correct but should not be relied on as statements or representations of fact. Interested parties must satisfy themselves by inspection or otherwise as to the correctness of each of them.



7 Paternoster Row, Carlisle CA3 8TT Tel: 01228 810300 Fax: 01228 810303  
Mayfair Office - Cashel House, 15 Thayer Street, London, W1U 3JT Tel: 0870 112 7099  
E-mail: [info@haywardtod.co.uk](mailto:info@haywardtod.co.uk) [www.haywardtod.co.uk](http://www.haywardtod.co.uk)