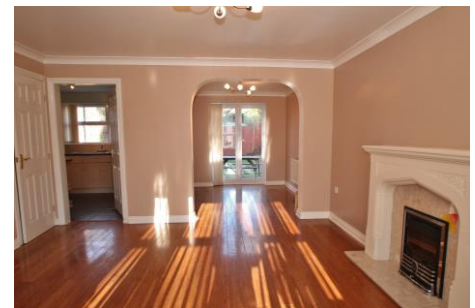


Property Particulars

www.thirlwell-estates.co.uk


7 Finchlay Court Brookfield, Middlesbrough, TS5 8EL

£279,950

Thirlwells are delighted to offer for sale this substantial 6 bedroom family size detached home which is offered for sale with no forward chain. The accommodation briefly comprises: entrance hall, lounge, dining room, kitchen, breakfast room, utility, cloakroom w/c, 4 first floor bedrooms (master with en-suite) and family bathroom w/c, 2 further bedrooms to the second floor and shower room w/c. Externally is an open plan front garden, double driveway which leads to a double integral garage, a private enclosed rear garden mainly laid to lawn with paved patio area. Internal viewing is considered essential.



- 6 bedrooms
- Double driveway & double garage
- Front & rear gardens
- Accommodation split over 3 floors
- Family bathroom, shower room, master en-suite & cloakroom w/c
- No forward chain

7 Finchlay Court

Middlesbrough, TS5 8EL

Ground Floor

Entrance Hall

Panelled entrance door with double glazed insert, woodgrain effect laminate flooring, radiator, coved ceiling, smoke alarm, security alarm control panel, staircase to first floor, door to lounge.

Lounge 16' 5" x 13' 2" (5.00m x 4.01m) including bay & recess

UPVC double glazed bay window to front aspect, woodgrain effect laminate flooring, double radiator, coved ceiling, flame effect coal effect gas fire with marble style hearth, inlay & surround, built in understairs cupboard, open arch to dining room & door to kitchen.

Dining Room 9' 1" x 9' 0" (2.77m x 2.74m)

UPVC double glazed French doors to rear garden, radiator, coved ceiling, woodgrain effect laminate flooring.

Kitchen 11' 8" x 9' 1" (3.55m x 2.77m)

Fitted with range of woodgrain style fronted units, drawers & wall cupboards, glass fronted display cabinets, open displays, wine rack, granite effect roll edge work surfaces, single drainer stainless steel sink unit with rinse bowl & mixer tap, co-ordinated tiled splashbacks, built in appliances include stainless steel gas hob, extractor hood & stainless steel electric oven, fridge & freezer, double radiator, UPVC double glazed window to rear aspect, ceramic tiled flooring, open arch to breakfast room.

Breakfast Room 9' 2" x 7' 8" (2.79m x 2.34m)

UPVC double glazed window to rear aspect, ceramic tiled flooring, double radiator, access to roof space, door to utility.

Utility Room 5' 1" x 4' 10" (1.55m x 1.47m)

Roll edge granite effect worktop, plumbing for auto washer, ceramic tiled flooring, co-ordinated tiled splashbacks, wall mounted gas fired boiler, extractor fan, radiator, door to cloakroom & door leading to rear garden.

First Floor Landing

Balustrade with turned spindles, staircase to second floor, smoke alarm.

Master Bedroom 13' 11" x 9' 3" (4.24m x 2.82m) plus doorway recess & including depth of robes

UPVC double glazed window to front aspect, radiator, coved ceiling, T.V. point, fitted wardrobes, door to en suite.

En Suite

White suite with tiled shower cubicle, vanity wash hand basin with mixer tap & cupboard below, dual flush close coupled w/c, co-ordinated tiled splashbacks, UPVC double glazed window to front aspect, radiator, electric shaver point, tile effect laminate flooring.

Bedroom 2 13' 6" x 8' 10" (4.11m x 2.69m) including depth of fitted furniture

UPVC double glazed window to front aspect, radiator, fitted wardrobes.

Bedroom 3 9' 3" x 8' 8" (2.82m x 2.64m) including depth of fitted furniture

UPVC double glazed window to rear aspect, radiator, fitted wardrobes with sliding doors.

Bedroom 4 8' 9" x 8' 7" (2.66m x 2.61m) max into recess & including depth of fitted robes

UPVC double glazed window to rear aspect, radiator, fitted wardrobes with sliding doors.

Bathroom w/c

White suite comprising; panelled bath with shower over, vanity wash hand basin with cupboard below, dual flush close coupled w/c, co-ordinated tiled splashbacks, radiator, UPVC double glazed window to rear aspect, shaver point, extractor fan.

Second Floor Landing

Balustrade with turned spindles, access to loft space, radiator, smoke alarm, doors to bedrooms 5 & 6 and shower room/

Bedroom 5 17' 1" x 9' 5" (5.20m x 2.87m) including depth of robes

Twin sealed unit double glazed skylights to rear, radiator, fitted airing cupboard housing hot water cylinder, fitted wardrobes.

These particulars do not constitute, nor constitute part of, an offer or contract. All statements contained in these particulars as to this property are made without responsibility on the part of Thirlwells or the vendor. None of the statements contained in these particulars as to this property are to be relied on statements of representations of fact. An intending purchaser must satisfy himself by inspection or otherwise as to the correctness of each of the statements contained in these particulars. The vendor does not make or give, and neither Thirlwells, nor any person in their employment has any authority to make or give any representation or warranty whatever in relation to this property. All measurements are approximate.



Partners: Wendy Clarke, Nicola Munro MNAEA

7 Finchlay Court

Middlesbrough, TS5 8EL

Bedroom 6'7" 1" x 8' 10" (2.16m x 2.69m)

Twin sealed unit double glazed skylights to rear aspect, radiator, built in cupboard.

Shower Room w/c

White suite comprising; tiled shower cubicle, vanity wash hand basin with cupboard below, dual flush close coupled w/c, double radiator, sealed unit double glazed skylight to rear aspect, extractor fan, tiled splashbacks.

Externally

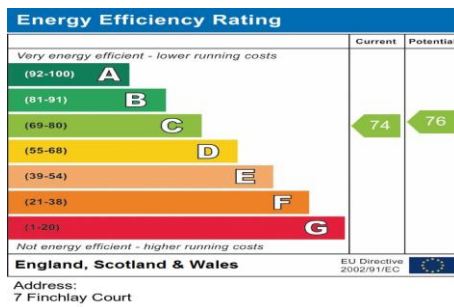
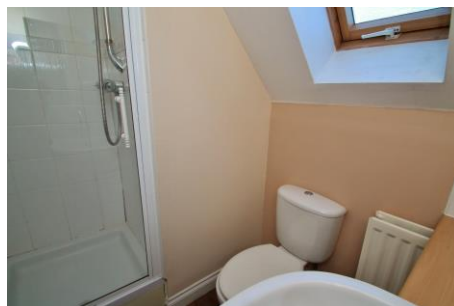
Open plan front garden, lawn with flower & shrub border, paved path to entrance door, double width block paved driveway leads to garage & side gate to rear. Enclosed rear garden with paved path, patio & lawn.

Garage

Attached double garage with twin up/over doors, light & power, side courtesy door.

These particulars do not constitute, nor constitute part of, an offer or contract. All statements contained in these particulars as to this property are made without responsibility on the part of Thirlwells or the vendor. None of the statements contained in these particulars as to this property are to be relied on statements of representations of fact. An intending purchaser must satisfy himself by inspection or otherwise as to the correctness of each of the statements contained in these particulars. The vendor does not make or give, and neither Thirlwells, nor any person in their employment has any authority to make or give any representation or warranty whatever in relation to this property. All measurements are approximate.

7 Finchlay Court Middlesbrough, TS5 8EL



These particulars do not constitute, nor constitute part of, an offer or contract. All statements contained in these particulars as to this property are made without responsibility on the part of Thirlwells or the vendor. None of the statements contained in these particulars as to this property are to be relied on statements of representations of fact. An intending purchaser must satisfy himself by inspection or otherwise as to the correctness of each of the statements contained in these particulars. The vendor does not make or give, and neither Thirlwells, nor any person in their employment has any authority to make or give any representation or warranty whatever in relation to this property. All measurements are approximate.



Partners: Wendy Clarke, Nicola Munro MNAEA