

## Rutland Road

, S3 9PS

- Investment opportunity
- Based along a main road
- Has private car park to the rear
- Large spacious area

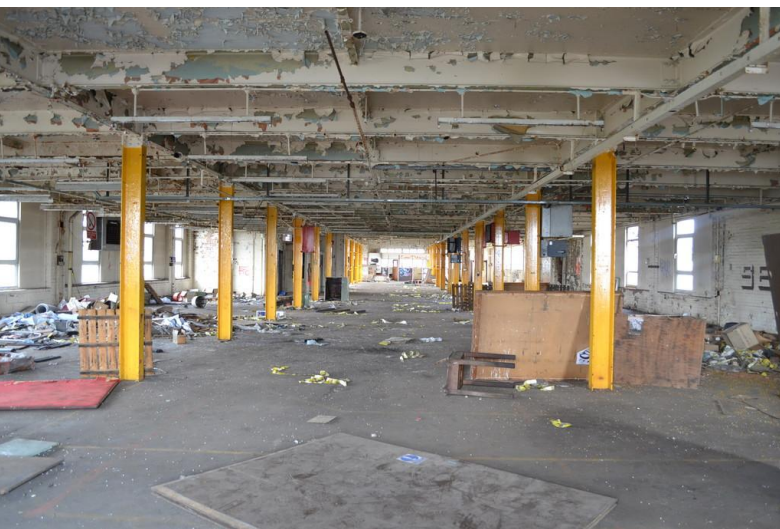
Price On Application

**AK**  
ESTATES  
SALES & LETTINGS



**REQUEST FULL DETAILS**

HOT INVESTMENT OPPORTUNITY - To find out full details of this fantastic city centre based commercial unit call us today on 0114 2695719







%epcGraph\_c\_1\_328%

**COUNCIL TAX BAND**

Tax band

**TENURE**

Freehold

**LOCAL AUTHORITY**

**OFFICE**  
23 Market Square  
Woodhouse  
Sheffield  
S13 7JX

**T:** 0114 2695719  
**E:** [sales@ak-estates.com](mailto:sales@ak-estates.com)  
**W:** [www.ak-estates.com](http://www.ak-estates.com)

Agents Note: Whilst every care has been taken to prepare these sales particulars, they are for guidance purposes only. All measurements are approximate and for general guidance purposes only and whilst every care has been taken to ensure their accuracy, they should not be relied upon and potential buyers are advised to recheck the measurements