



OAKFIELD COURT

CLIFTON

AN EXCLUSIVE
DEVELOPMENT
OF
1 & 2 BEDROOM
APARTMENTS

A beautiful church from the outside; stylish and unique homes on the inside - Oakfield Court is full of charm, character and light.



OAKFIELD COURT
WELCOME

YOUR UNIQUE HOME IN THE HEART OF CLIFTON

Oakfield Court is a stunning converted church in the heart of Clifton - Bristol's most desirable quarter. Set within a peaceful courtyard, Oakfield Court offers a mix of stylish one and two bedroom apartments across four storeys. Sympathetic to the church's period architecture, the conversion seamlessly blends old with new. Boasting modern touches and an enduring style, this

is certain to be a home that will be treasured forever.

A UNIQUE MIX OF PERIOD FEATURES WITH MODERN STYLING

From kaleidoscopic stained-glass windows to high-vaulted ceilings, Oakfield Court retains many beautiful features including the church's original arches. All enhanced by light oak



Each apartment combines original features with sleek, modern touches to celebrate both old and new.

flooring and neutral décor, which also accentuates the sense of space.

This contemporary scheme is continued throughout the conversion, with sleek, open-plan kitchens and modern bathrooms, all combining craftsmanship and quality to create a finish of the highest quality. Oakfield Court sits within its own generous plot

with each apartment given its own designated courtyard parking space.

An impressive conversion, if you're looking for something extraordinary in Clifton, you've found it.





CLIFTON - WHERE CITY AND VILLAGE LIFESTYLES MEET

Nestled in the heart of Clifton, Oakfield Court is a rare opportunity. Tucked away in a quiet location yet a stone's throw from the best that this thriving city village has to offer. From street upon street of stunning Georgian and Victorian architecture to stylish bars and sumptuous eateries, Clifton is synonymous with bistros, gastro pubs and boutiques that sell everything you could ever want.

In terms of eateries, there is a range of top-class and often quirky restaurants, and a bohemian café culture that reflects the local, relaxed way of life. One gem very close to Oakfield Court is the Clifton Lido. Once a Victorian lap-pool, the historic Lido has been brought back to life as a sleek restaurant-bar and trendy spa complex. The glass-walled restaurant overlooks the heated outdoor pool – which makes dining on delicious dishes while others swim a guilty pleasure.

At Oakfield Court, you are not only living in an historic building, you are surrounded by historic landmarks too. Brunel's famed Clifton Suspension Bridge is within walking distance, as are the Downs – a very special place to enjoy the perfect Sunday stroll or an energetic evening run.

Venture out of your urban village and you are minutes from Bristol's city centre. As one of the most dynamic and cosmopolitan cities outside of London, as well as a wealth of history, Bristol has a great mix of pubs, clubs and restaurants. What more could you want?

NUMBER

1



ROOM DIMENSIONS

LIVING ROOM/KITCHEN

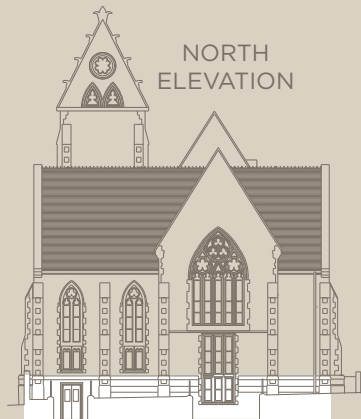
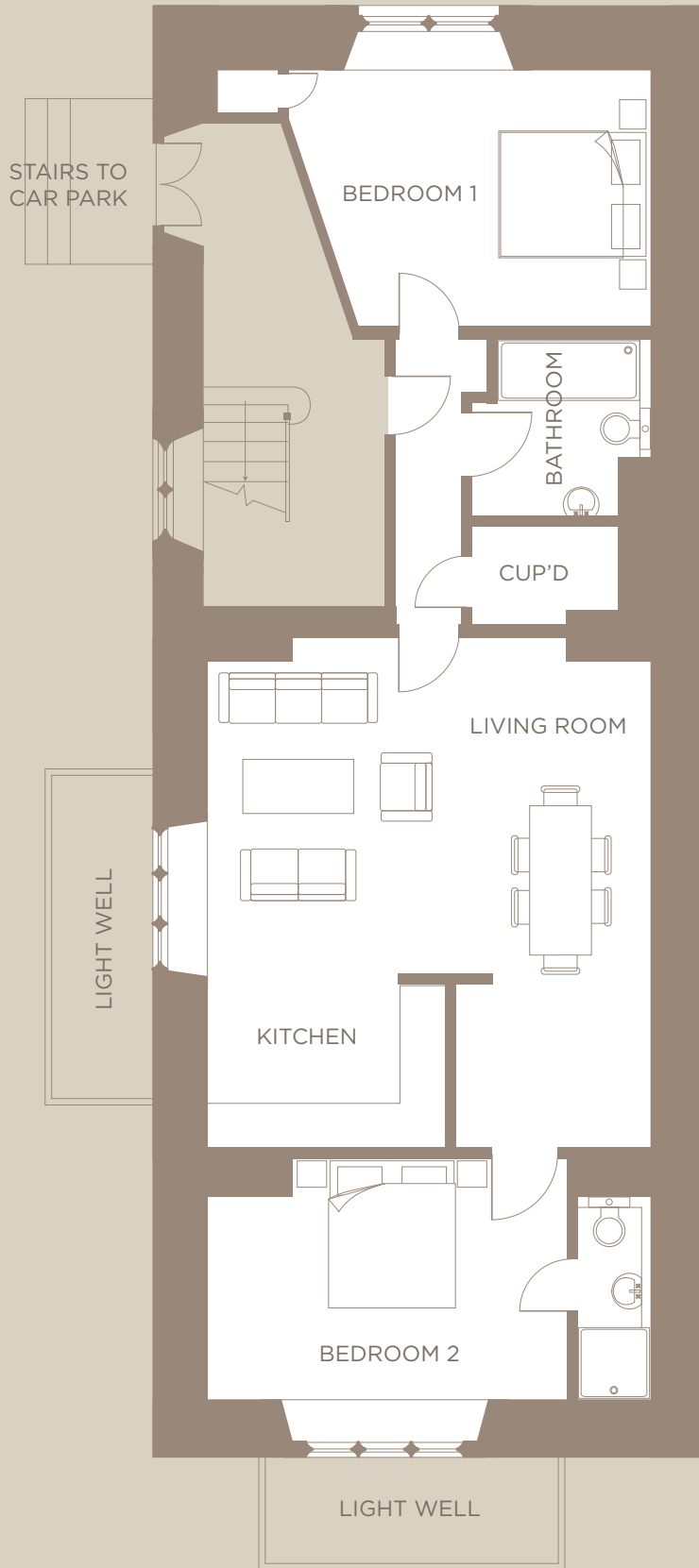
6507mm x 5608mm 21'4" x 18'4"

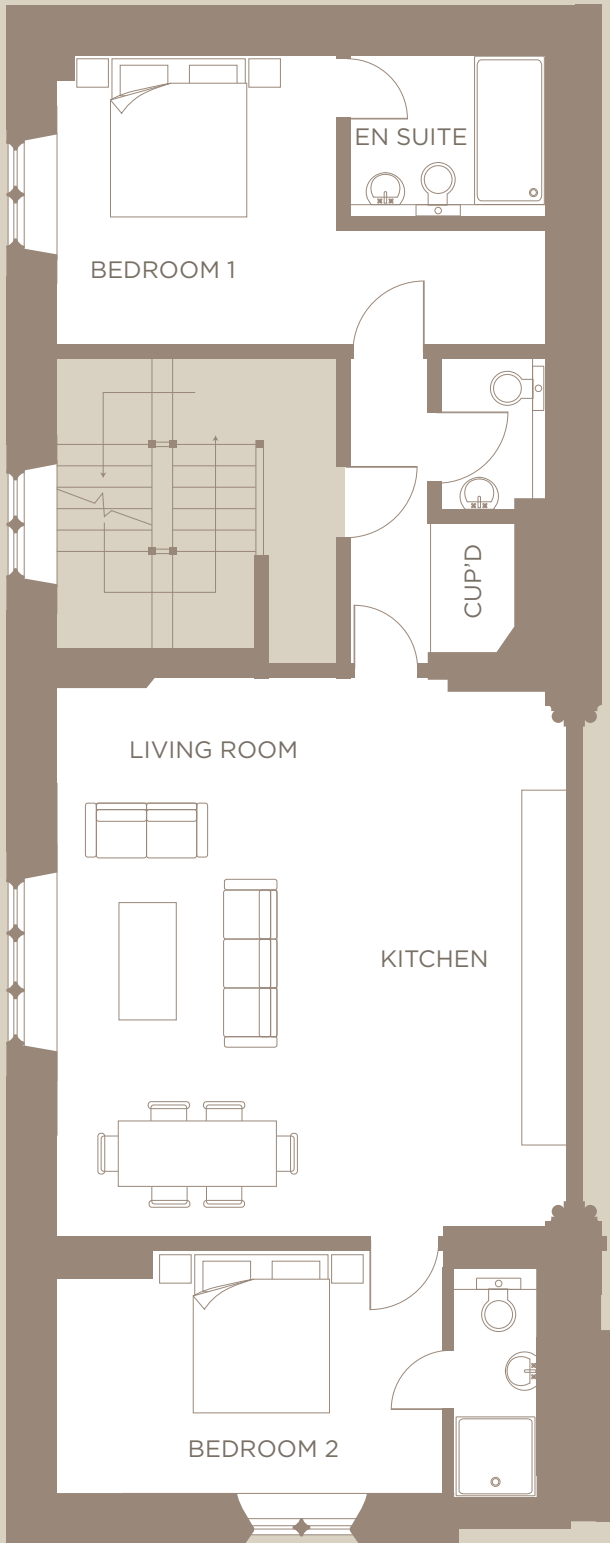
BEDROOM 1

4593mm x 3075mm 15'0" x 10'1"

BEDROOM 2

3716mm x 3267mm 12'2" x 10'8"





ROOM DIMENSIONS

LIVING ROOM/KITCHEN

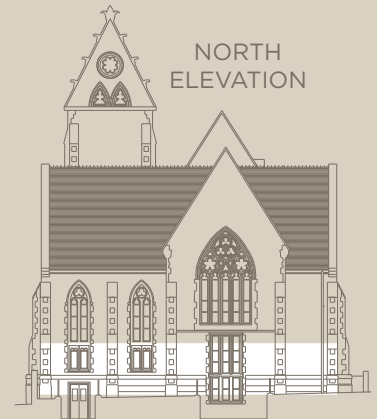
6630mm x 6003mm 21'9" x 19'8"

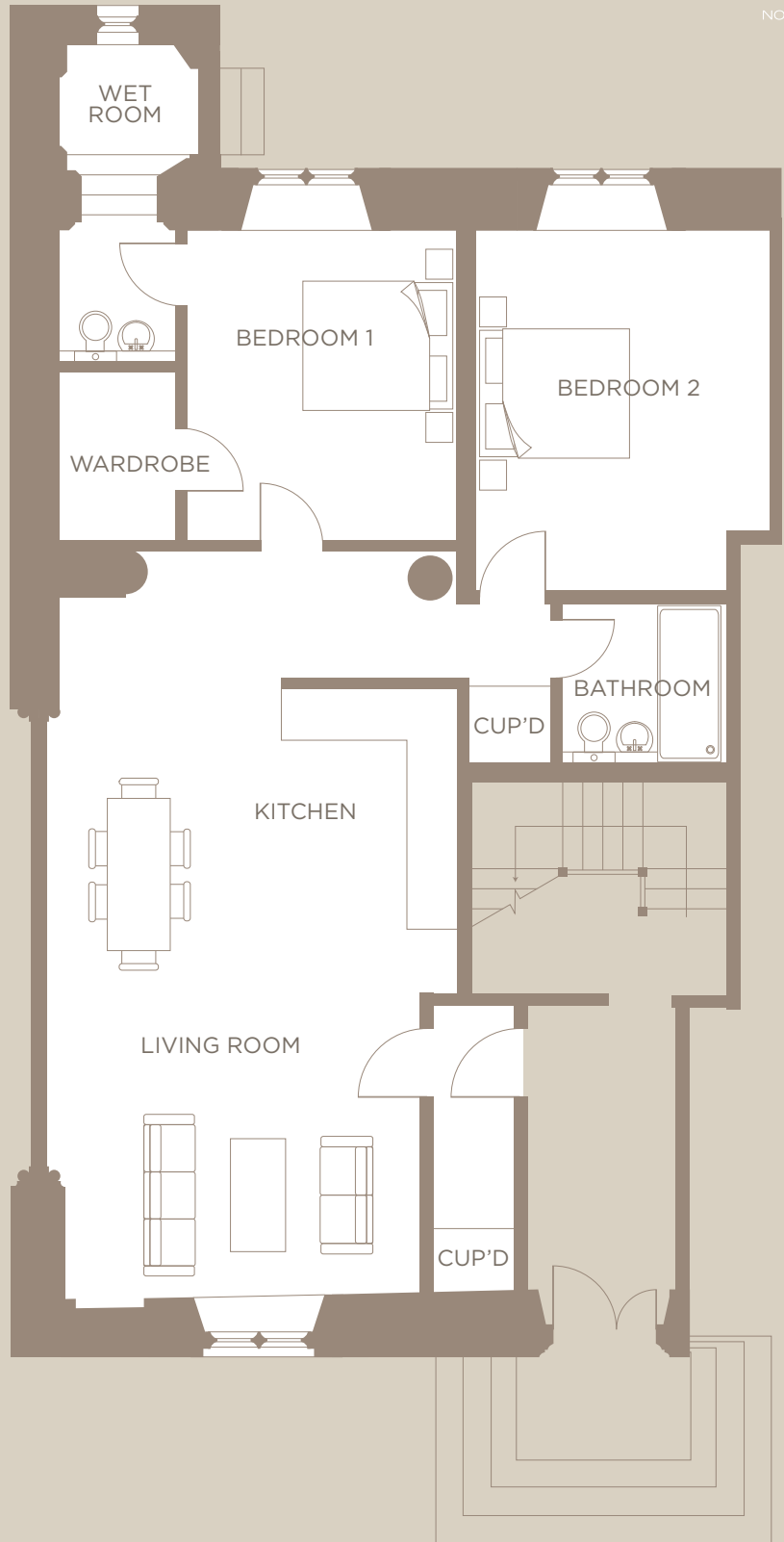
BEDROOM 1

3440mm x 3342mm 11'3" x 10'11"

BEDROOM 2

4631mm x 2556mm 15'2" x 8'4"





ROOM DIMENSIONS

LIVING ROOM/KITCHEN

7620mm x 4678mm 25'4" x 15'4"

BEDROOM 1

3861mm x 3383mm 12'8" x 11'1"

BEDROOM 2

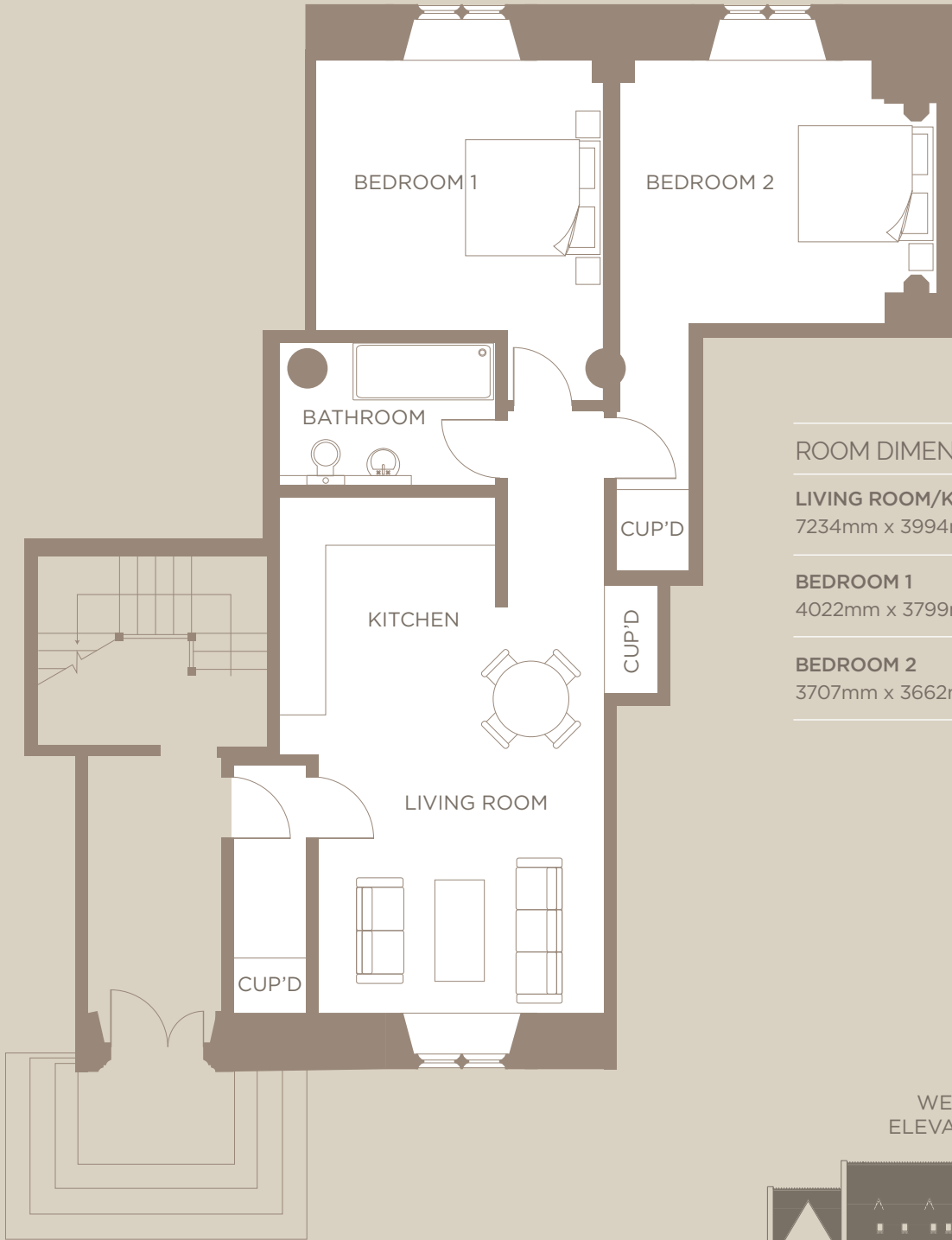
3669mm x 3419mm 12'0" x 11'2"

WEST
ELEVATION





NORTH



ROOM DIMENSIONS

LIVING ROOM/KITCHEN

7234mm x 3994mm 23'8" x 13'1"

BEDROOM 1

4022mm x 3799mm 13'2" x 12'5"

BEDROOM 2

3707mm x 3662mm 12'1" x 12'0"

WEST ELEVATION



NUMBER

5



ROOM DIMENSIONS

LIVING ROOM/KITCHEN

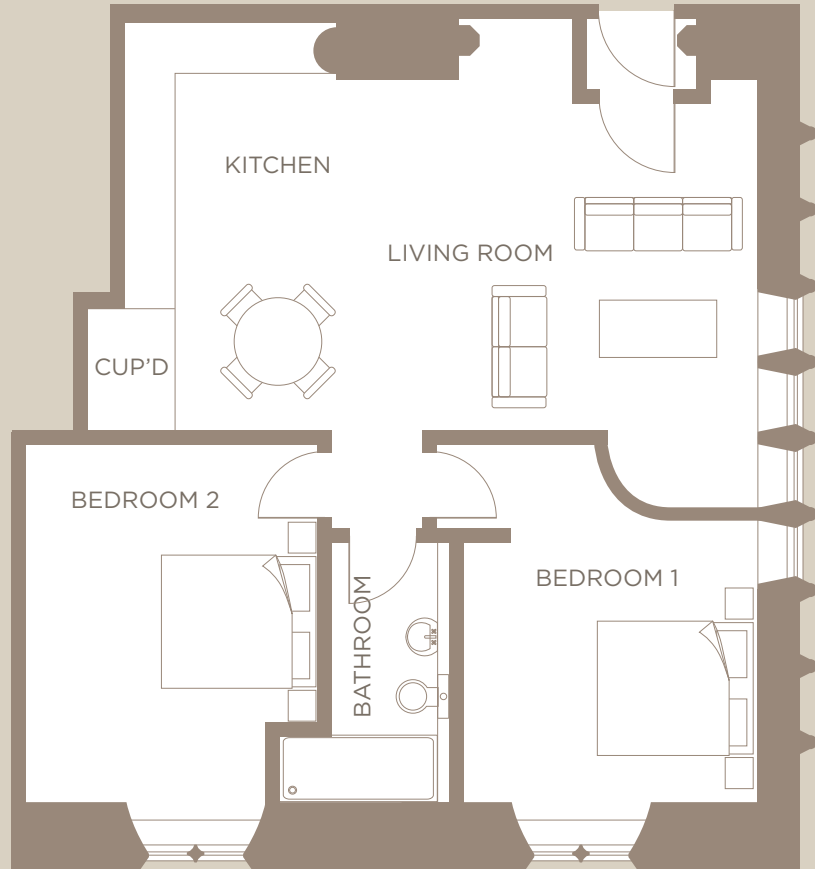
7625mm x 4935mm 25'0" x 16'2"

BEDROOM 1

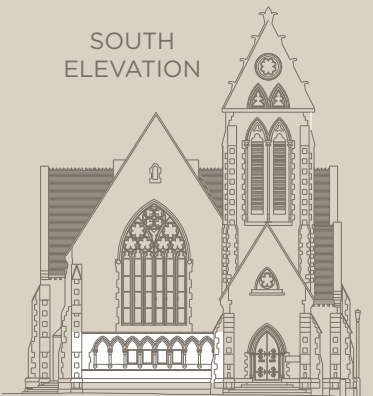
3576mm x 3139mm 11'8" x 10'3"

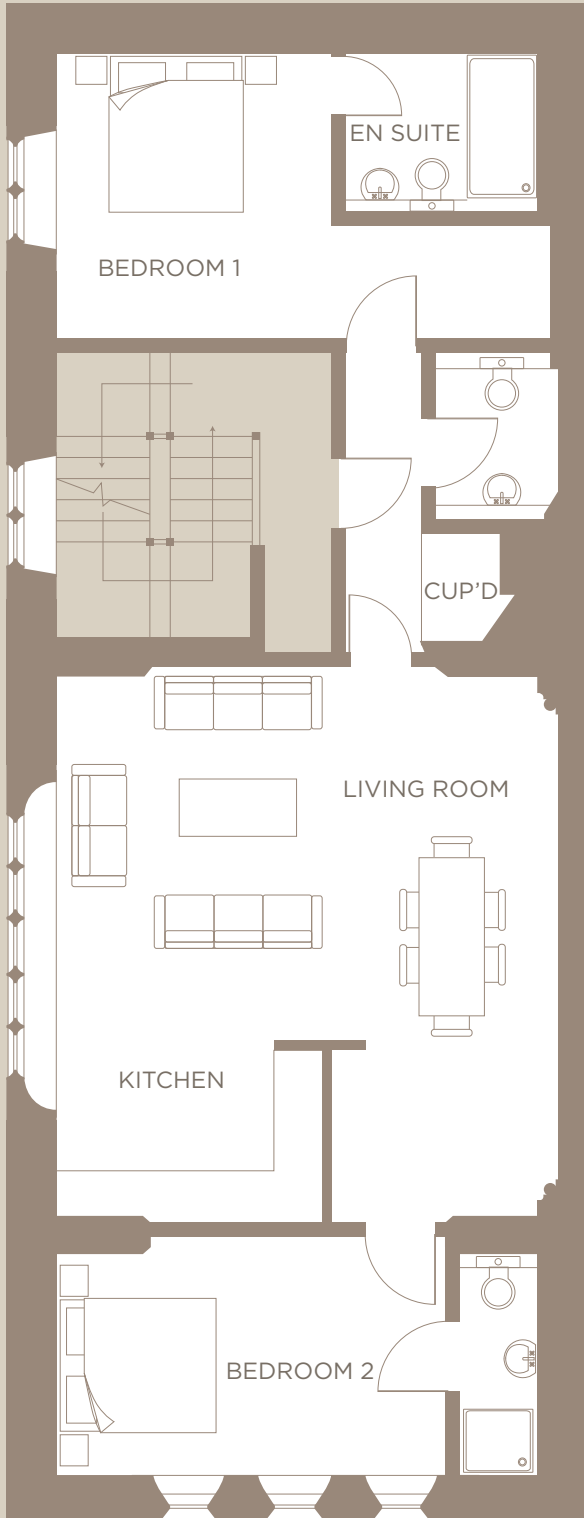
BEDROOM 2

4313mm x 3566mm 14'1" x 11'8"



SOUTH ELEVATION





ROOM DIMENSIONS

LIVING ROOM/KITCHEN

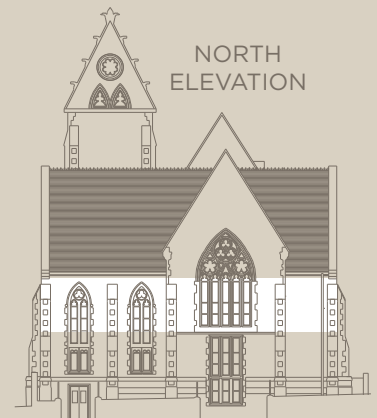
6725mm x 5995mm 22'0" x 19'8"

BEDROOM 1

3354mm x 3342mm 11'0" x 10'11"

BEDROOM 2

5762mm x 2884mm 18'10" x 9'5"



NUMBER

7



NORTH

ROOM DIMENSIONS

LIVING ROOM/KITCHEN

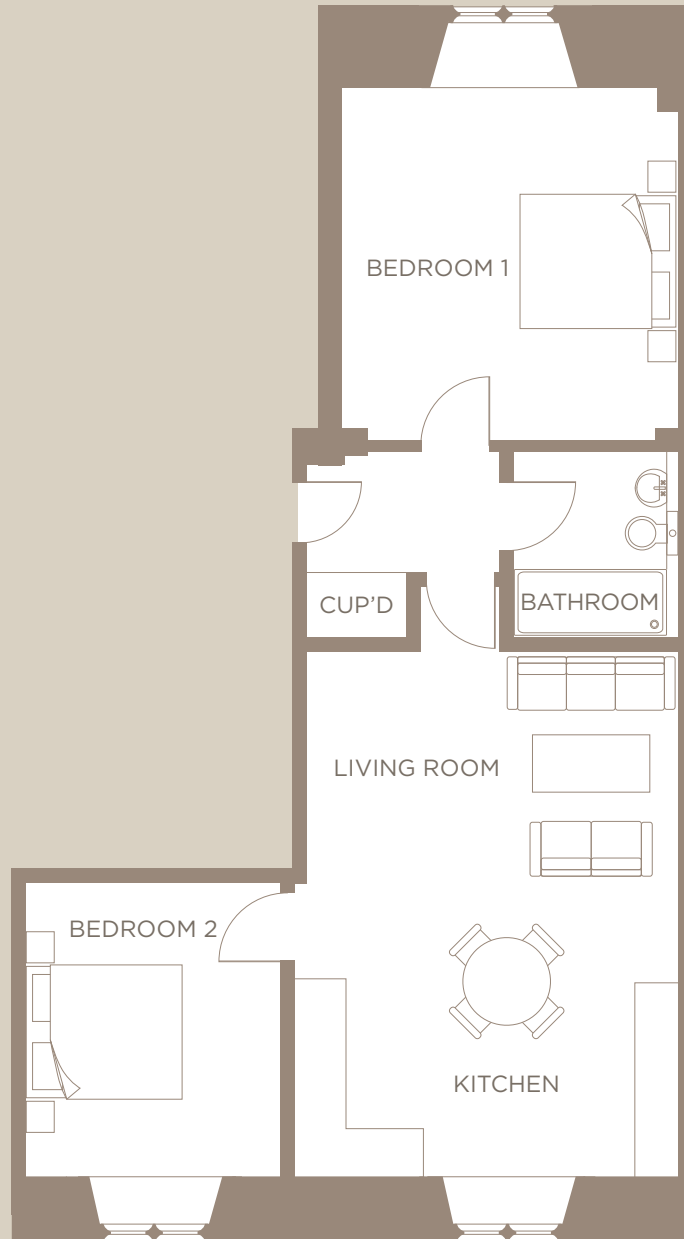
6363mm x 4486mm 20'10" x 14'8"

BEDROOM 1

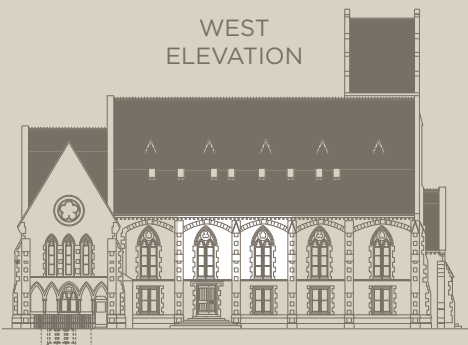
4268mm x 4006mm 14'0" x 13'1"

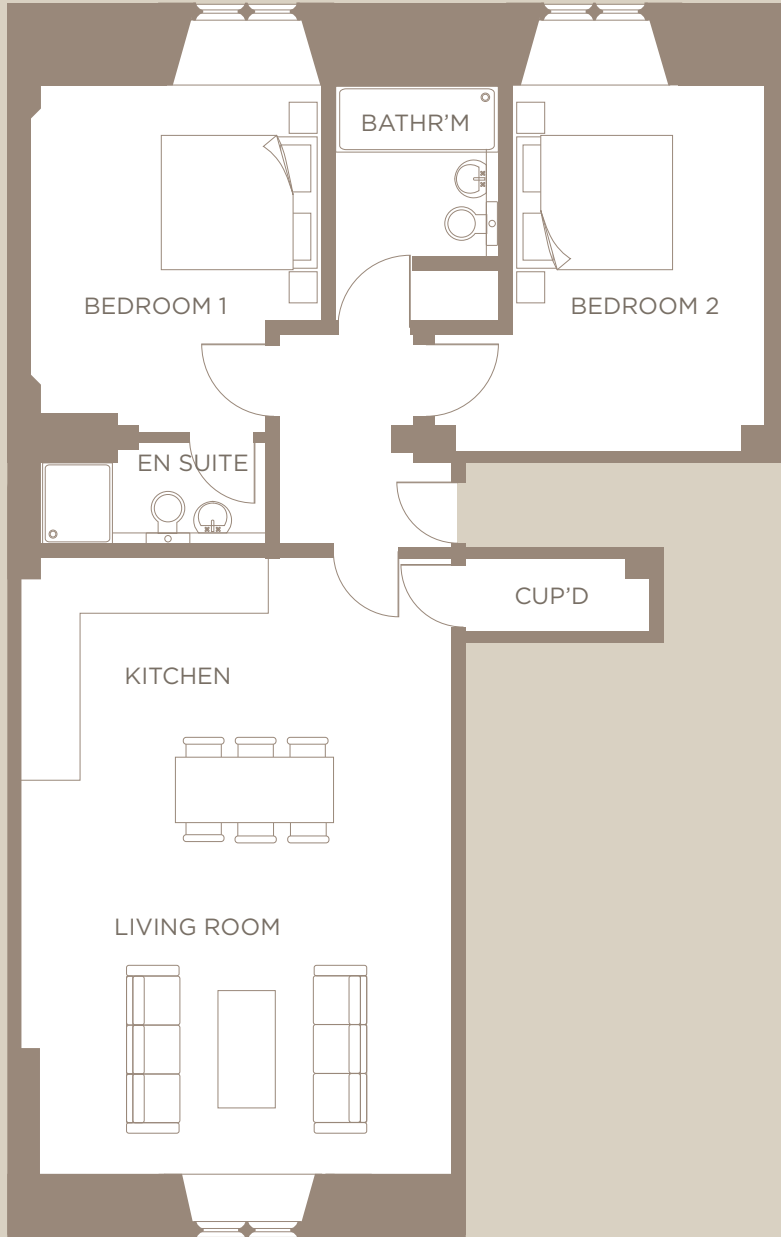
BEDROOM 2

3547mm x 3241mm 11'7" x 10'7"



WEST
ELEVATION





ROOM DIMENSIONS

LIVING ROOM/KITCHEN

7443mm x 5251mm 24'5" x 17'2"

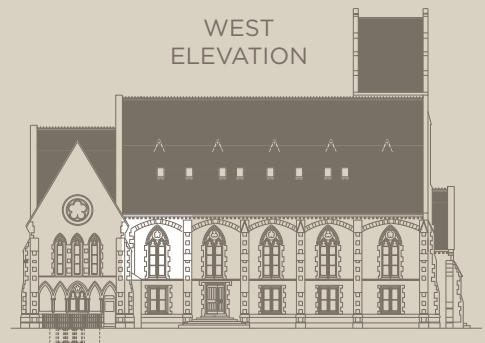
BEDROOM 1

4190mm x 3531mm 13'8" x 11'7"

BEDROOM 2

4401mm x 3968mm 14'5" x 13'0"

WEST
ELEVATION

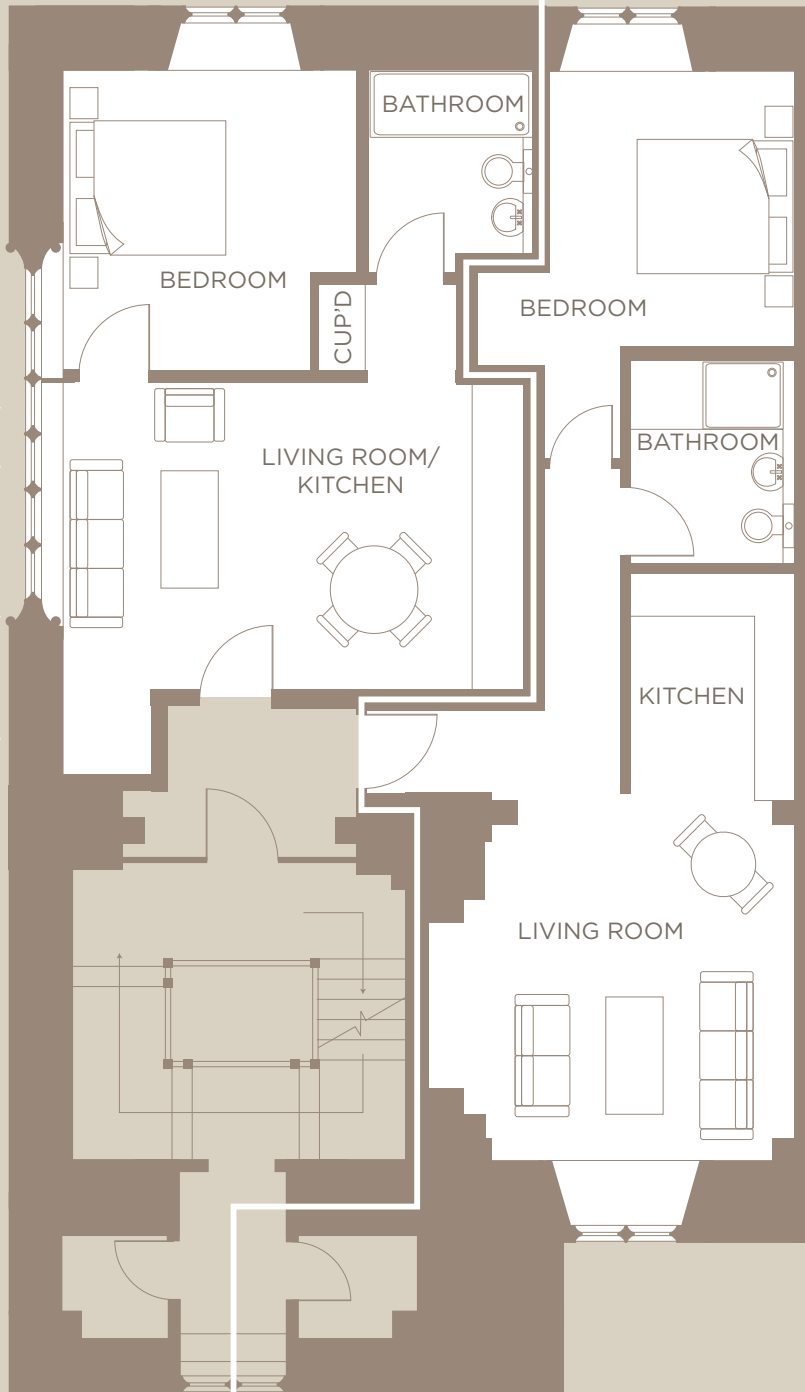


NUMBER

9

NUMBER

10



ROOM DIMENSIONS

LIVING ROOM/
KITCHEN

5529mm x 3691mm
18'1" x 12'1"

BEDROOM

3642mm x 3532mm
11'11" x 11'7"

ROOM DIMENSIONS

LIVING ROOM/
KITCHEN

7230mm x 4413mm
23'8" x 14'5"

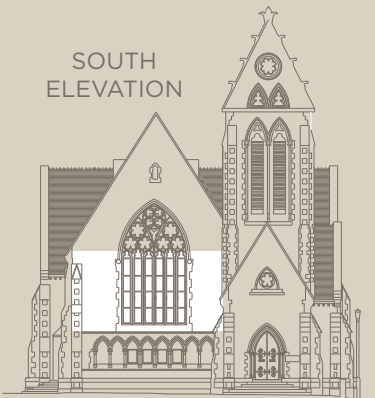
BEDROOM 1

3667mm x 2989mm
12'0" x 9'9"



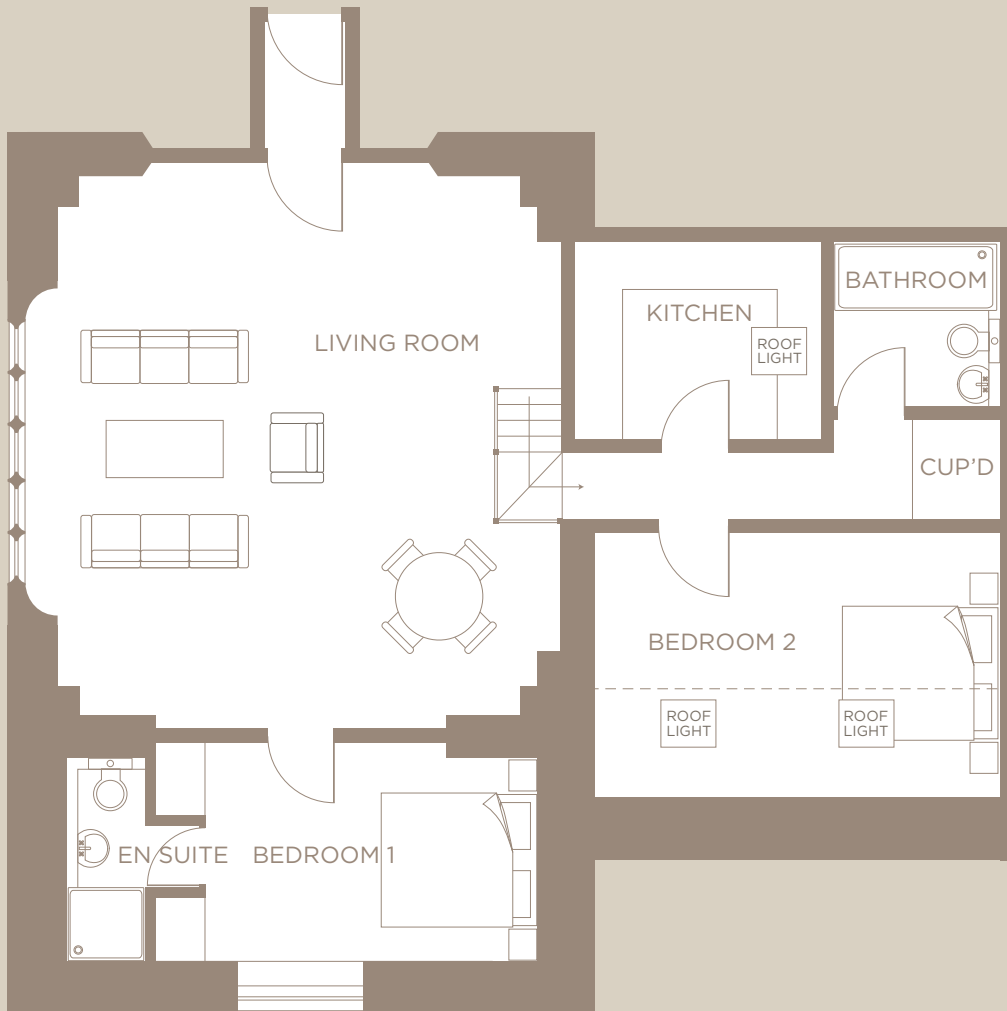
NORTH

SOUTH
ELEVATION



WEST
ELEVATION





ROOM DIMENSIONS

LIVING ROOM

6506mm x 6022mm 21'4" x 19'9"

KITCHEN

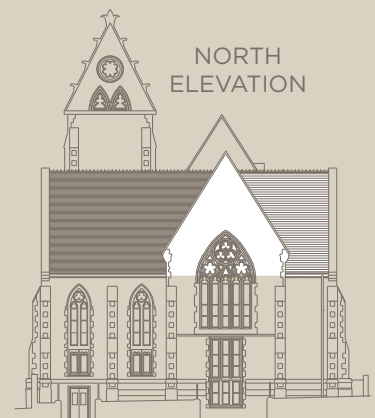
3227mm x 2400mm 10'7" x 7'10"

BEDROOM 1

4006mm x 2733mm 13'1" x 8'11"

BEDROOM 2

4903mm x 3210mm 16'1" x 10'6"



NUMBER

12



NORTH

ROOM DIMENSIONS

LIVING ROOM

5782mm x 3449mm 18'11" x 11'3"

KITCHEN

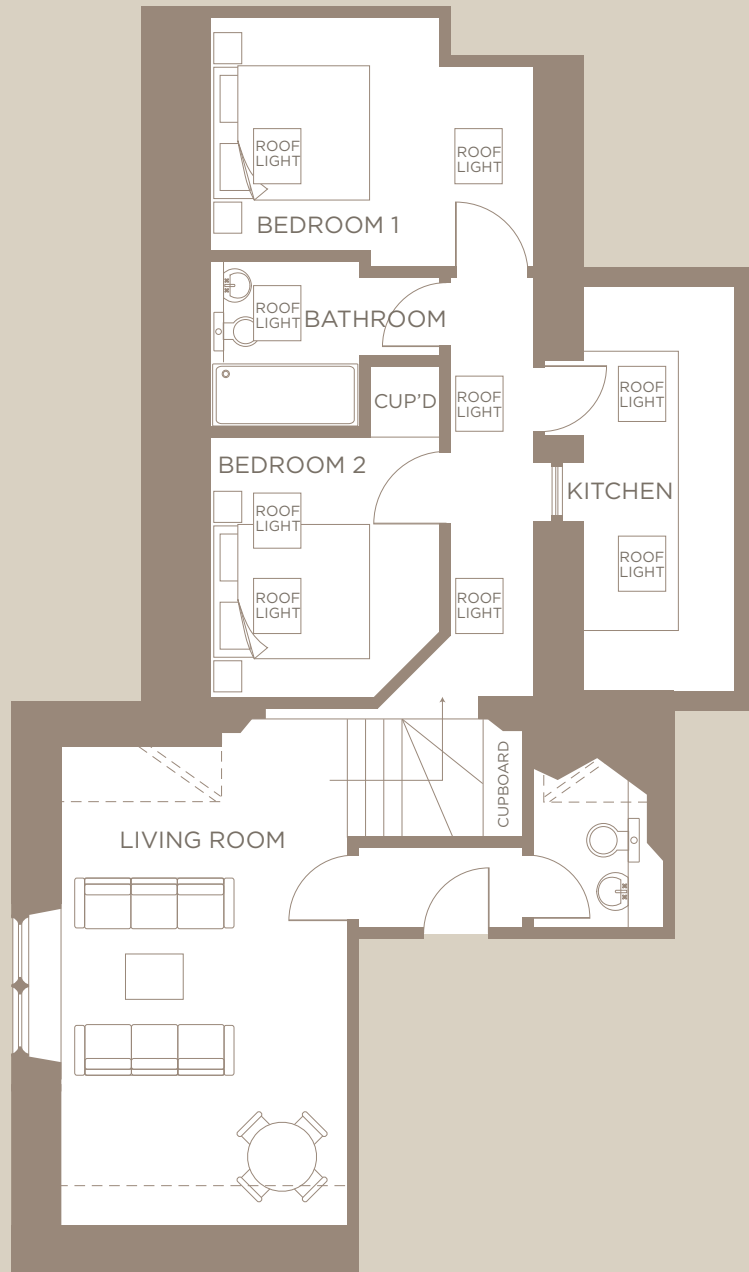
4903mm x 1938mm 16'1" x 6'4"

BEDROOM 1

3913mm x 3213mm 12'10" x 10'6"

BEDROOM 2

3139mm x 2767mm 10'3" x 9'0"



EAST
ELEVATION

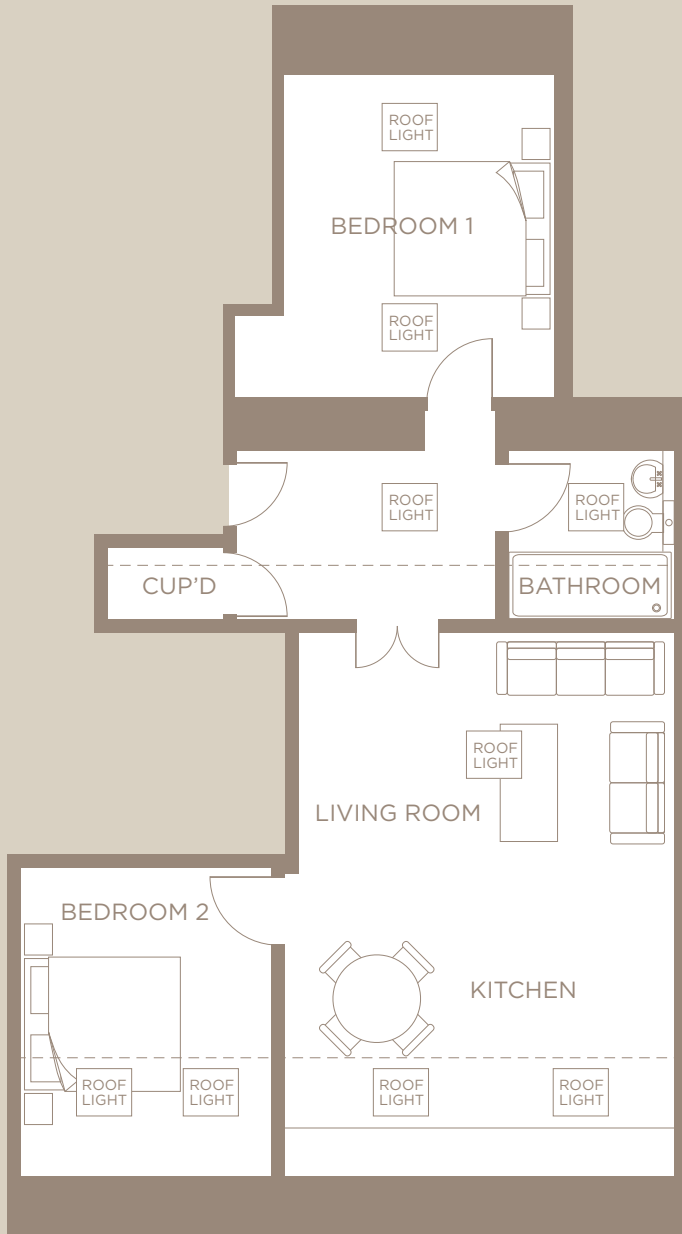




NORTH

NUMBER

13



ROOM DIMENSIONS

LIVING ROOM/KITCHEN AREA

6558mm x 4540mm 21'6" x 14'10"

BEDROOM 1

3913mm x 3250mm 12'10" x 10'7"

BEDROOM 2

3706mm x 3185mm 12'1" x 10'5"

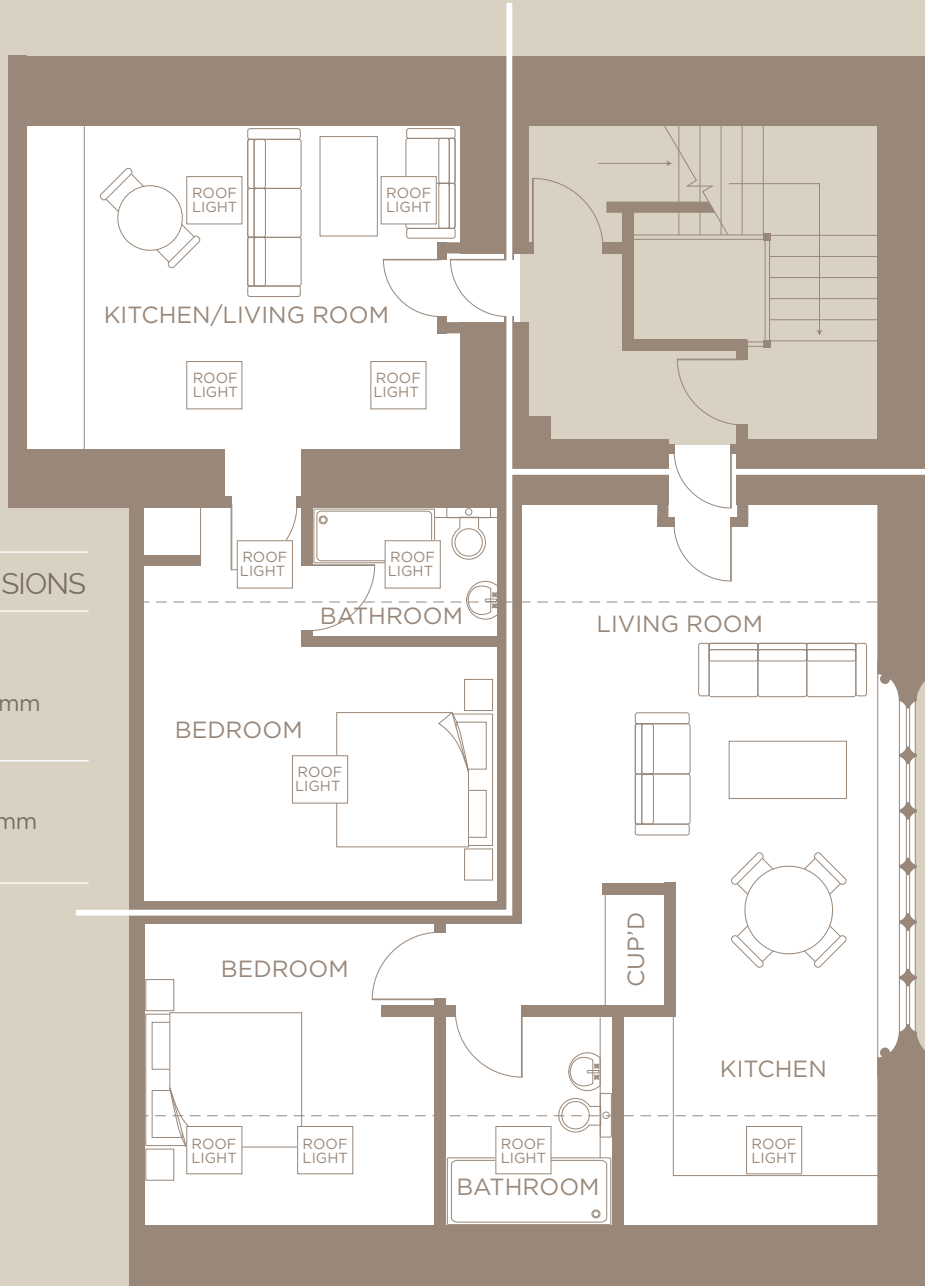


NUMBER

14

NUMBER

15



ROOM DIMENSIONS

LIVING ROOM/
KITCHEN

5225mm x 3900mm
17'1" x 12'9"

BEDROOM

4874mm x 4376mm
15'11" x 14'4"

ROOM DIMENSIONS

LIVING ROOM

8709mm x 4276mm
28'6" x 14'0"

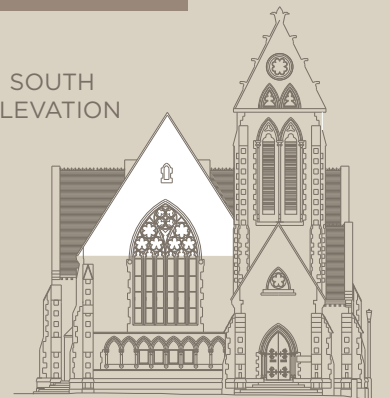
BEDROOM

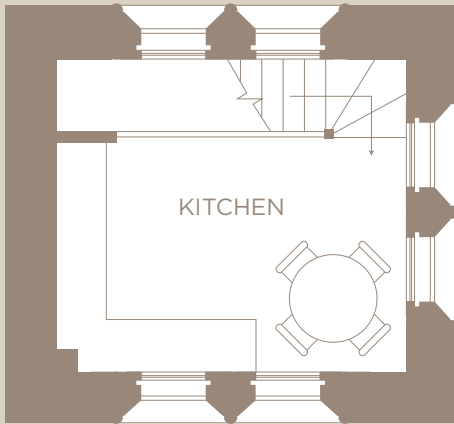
3635mm x 3509mm
11'11" x 11'6"

EAST
ELEVATION

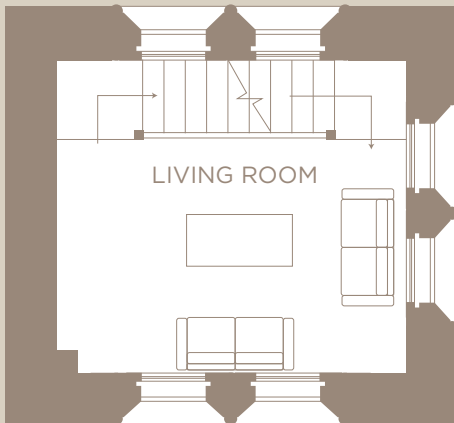


SOUTH
ELEVATION

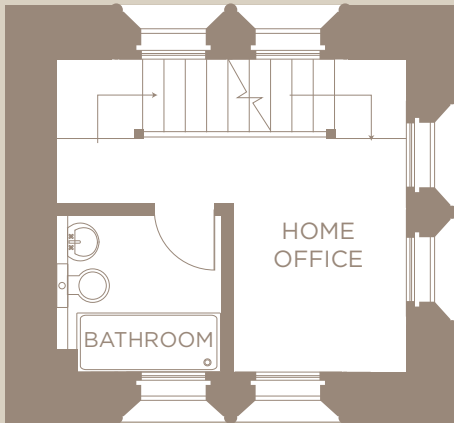




LEVEL 4



LEVEL 3



LEVEL 2



LEVEL 1

ROOM DIMENSIONS

KITCHEN

4242mm x 3784mm 13'11" x 12'4"

LIVING ROOM

4242mm x 3784mm 13'11" x 12'4"

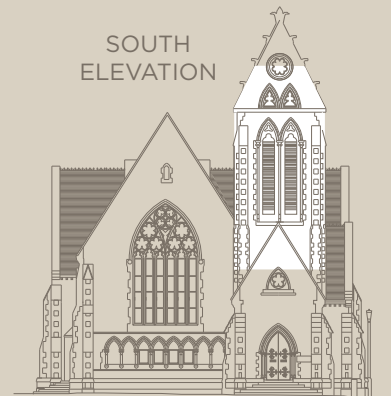
HOME OFFICE

2107mm x 3784mm 6'10" x 12'4"

BEDROOM

4242mm x 3784mm 13'11" x 12'4"

SOUTH ELEVATION



FLOOR LAYOUTS AND THE TOWER

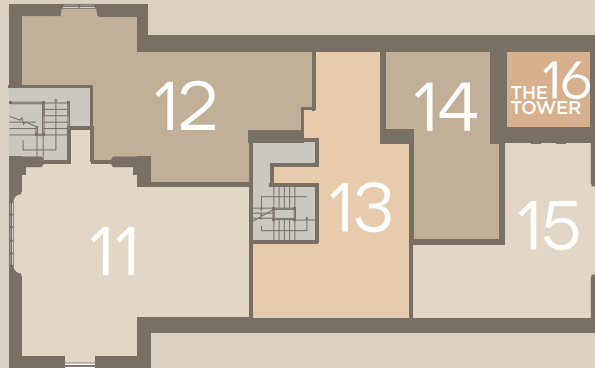


THIRD, FOURTH, FIFTH
AND SIXTH FLOORS

APARTMENT 16 - THE TOWER

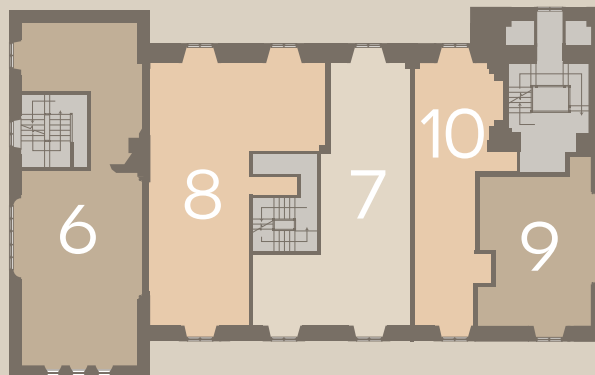
SECOND FLOOR

APARTMENTS 11 - 15
PLUS ENTRANCE TO THE TOWER



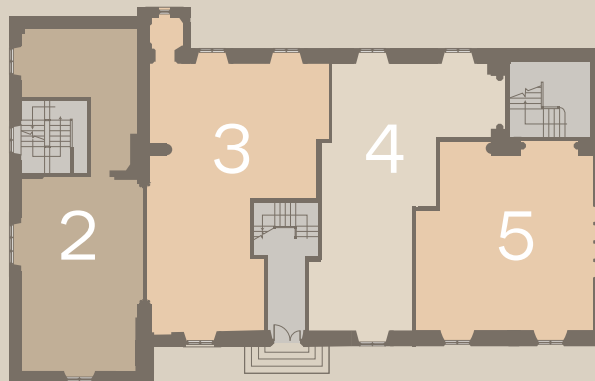
FIRST FLOOR

APARTMENTS 6 - 10



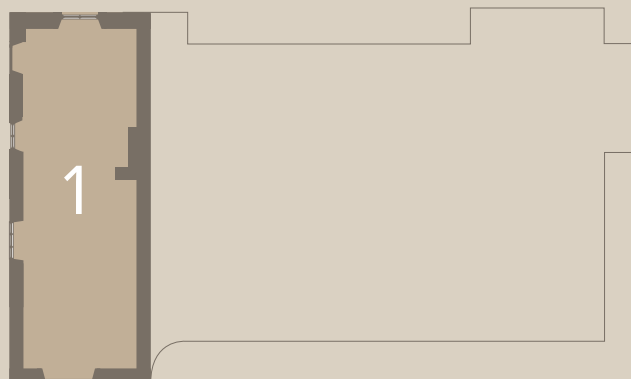
GROUND FLOOR

APARTMENTS 2 - 5



LOWER GROUND FLOOR

APARTMENT 1



SITE PLAN





QUALITY AND DETAIL TAKEN TO A NEW LEVEL

KITCHENS

- Bespoke fully fitted modern kitchen (choice available subject to build)
- Silestone worktops and upstands (choice available subject to build)
- Stainless steel sink and mixer tap
- Siemens integrated electric single oven & combi-microwave oven or a Siemens electric double oven depending on apartment layout.
- Siemens electric touch control hob
- Siemens combined fridge freezer
- Siemens cooker hood
- Siemens integrated dishwasher
- Soft closing doors and drawers

BATHROOMS AND EN-SUITES

- Duravit high quality sanitaryware
- Duravit wall hung WC and pushplate flush
- Duravit soft close toilet
- Crosswater satin stainless steel thermostatic bath/shower mixers and taps
- Chrome heated towel rails
- Glass shower screens to baths and showers
- LED Downlights to ceilings
- Porcelanosa large format contemporary ceramic floor and wall tiles (choice available subject to build)

ENTRANCE

- Individual apartment mail boxes
- Video entrance system for each apartment

COMMON AREAS

- Carpet to stairs and landings
- Combined communal and emergency lighting
- High quality fire doors throughout
- Centrally controlled fire alarm system

INTERIOR FINISHES

- High quality painted doors
- Brushed stainless steel ironmongery
- Oak engineered wood flooring generally to living / hall areas and kitchen areas
- Carpet to bedroom areas
- Walls and wood work finished in matt / eggshell emulsion in light shades of stone colour
- Historic architectural features retained where possible

HEATING

- Individual high efficiency Hot Water Cylinder for all apartments
- Electric Panel heating system for all apartments
- Underfloor heating in bathrooms and ensuites

ELECTRICAL

- Pre wiring for digital TV and Sky+ to each apartment
- BT telephone and data cabling to lounge and bedrooms
- Mains smoke detectors to hallways and heat detectors to kitchen areas

PRIVATE PARKING

- A dedicated car parking space for each apartment

WARRANTY

- All apartments will benefit from a 10 year Checkmate New Home Warranty

The light and airy feel is continued in the kitchens and bathrooms, through clean lines and sophisticated styling which injects a fresh, modern vibe.

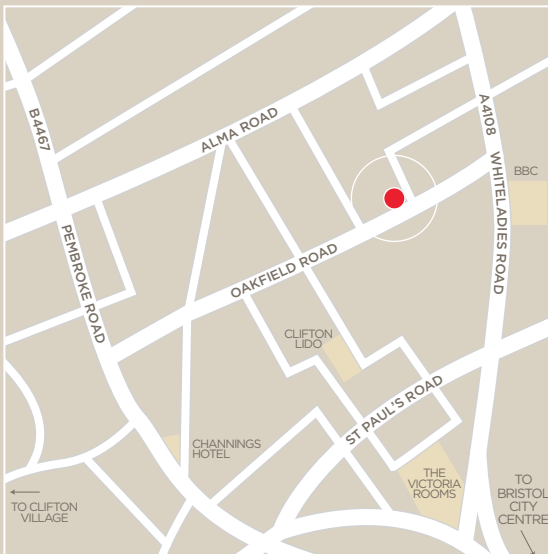
LOCATION AND DIRECTIONS



OAKFIELD COURT
CLIFTON

Oakfield Court is situated on Oakfield Road,
just off Whiteladies Road, Clifton.

SATNAV POSTCODE **BS8 2BD**



PROFESSIONAL TEAM

Oakfield Court is a joint venture between Freemantle Developments and Telereal Trillium.

FREEMANTLE DEVELOPMENTS - DEVELOPMENT MANAGER

Freemantle Developments is a privately owned Property Development Company based in Clifton, Bristol. Founded in 2002, Freemantle has established a reputation for innovation in residential property development. This is reflected in a portfolio of truly outstanding developments – 35 to date totalling 542 residential units. This experience, combined with their dynamic approach, has made Freemantle one of the region's leading property developers. www.freemantledevelopments.co.uk

TELEREAL TRILLIUM - PROPERTY OWNERS

Telereal Trillium is one of the UK's largest property companies, owning and managing over 8,000 properties, valued in excess of £5.5bn. The shareholders are leading real estate investors, the Pears family and management. Telereal Trillium has long term property partnerships with major clients, including the Department for Work and Pensions, Royal Mail and BT, and has frequently won awards for its innovation, service delivery and sustainability. It is currently developing a number of exciting residential projects across the country. www.telerealtrillium.com

LIAM RUSSELL ARCHITECTS - ARCHITECT

JOSEPH KING INTERIORS - INTERIOR DESIGN

BRAY AND SLAUGHTER - CONTRACTORS

IESIS - COST CONSULTANT

VITEC - SERVICES ENGINEERS



Oakfield Court is a joint venture between
Freemantle Developments and Telereal Trillium.

Whilst every effort has been made to ensure accuracy, this brochure has been produced for illustrative purposes only. Information contained herein is provided for guidance and will not form any part of any contract or constitute any offer, representation or warranty. All areas, measurements, layouts and distances are referred to as a guide only. Room dimensions have tolerances and should not be used to determine measurements for appliances or items of furniture. For the purposes of the Consumer Protection from Unfair Trading Regulations 2008, Flagstaff 2 Ltd reserves the right to alter and amend specifications and layouts without notice. All photographs and artists' impressions depict typical Flagstaff 2 Ltd showhomes/layouts and are not necessarily plot specific. Prior to reserving, all matters should be raised and confirmed with the acting Sales Advisors.