



**SALES**

**LETTINGS**

**MANAGEMENT**

[chiswick@tatepartnership.co.uk](mailto:chiswick@tatepartnership.co.uk)

**020 8996 0000**

**TATEPARTNERSHIP.CO.UK**



**Ennismore Avenue, Chiswick**

**£1,650 pcm**

A well proportioned (520sq/ft) one bedroom conversion flat within this attractive Victorian Town House. The top floor (2nd) accommodation has; entrance hall, living room, separate kitchen, double bedroom with fitted wardrobes, bathroom with shower over bath, loft for storage. Ennismore Avenue is a very popular Residential Road, which runs directly off Chiswick High Road, giving immediate access to central shopping, transport and dining facilities. Turnham Green & Stamford Brook tube stations are 5-10 minutes walk. Available Now, Unfurnished.

# Ennismore Avenue, Chiswick

## Floor Plan

Approximate gross internal area  
48 sq m / 520 sq ft

### Ennismore Avenue, W4

Approximate Gross Internal Area = 48.3 sq m / 520 sq ft

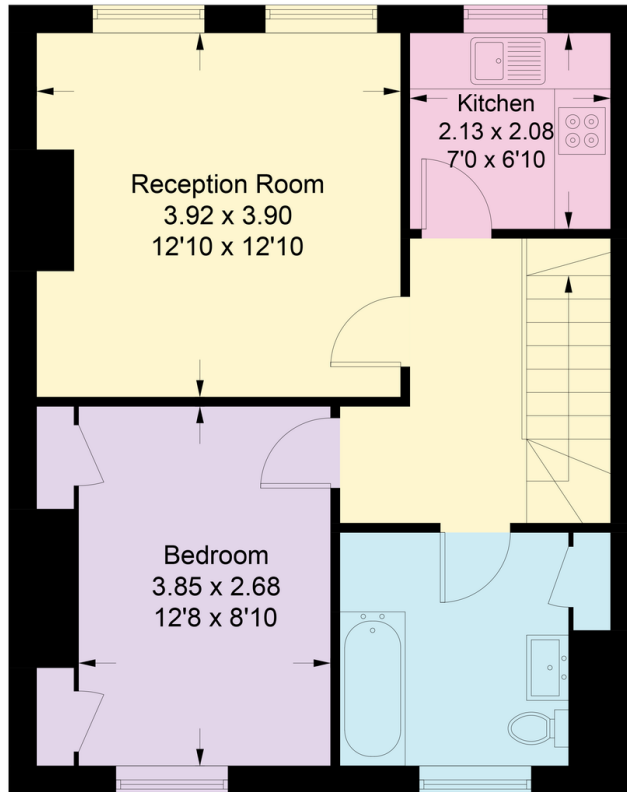


Illustration for identification purposes only, measurements are approximate, not to scale. floorplansketch.com © (ID1017923)

## EPC

