



SALES

LETTINGS

MANAGEMENT

chiswick@tatepartnership.co.uk

020 8996 0000

TATEPARTNERSHIP.CO.UK



Chaseley Drive

£1,825 pcm

A purpose built 624 sq/ft Two Bedroom apartment, situated in a popular Gated development, close to Gunnersbury station. The accommodation comprises; hall with storage cupboard, main double bedroom with recently updated en-suite shower room, further double bedroom, family bathroom, living/dining room and separate kitchen. Outside are well kept communal gardens, Gated Private Parking, with allocated parking space. The location is within 5 minutes walk of Gunnersbury Station (District & Overground Lines) and Chiswick High Road, with it's abundance of shopping/dining/transport facilities. The A4(M) into Central London and out to Heathrow, is a few minutes drive. Available early April. Part Furnished. Hounslow Band E.

Chaseley Drive

Floor Plan

Approximate gross internal area
58 sq m / 624 sq ft

Stubbs Court, Chiswick, W4

Approximate Gross Internal Area = 58.0 sq m / 624 sq ft

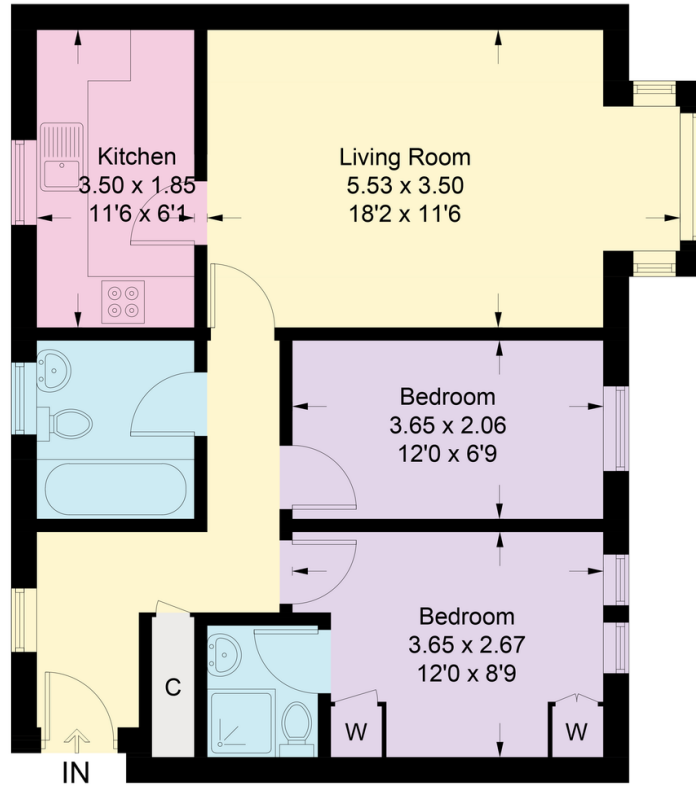


Illustration for identification purposes only, measurements are approximate, not to scale. floorplansUsketch.com © (ID672006)

EPC

