



SALES

LETTINGS

MANAGEMENT

chiswick@tatepartnership.co.uk

020 8996 0000

TATEPARTNERSHIP.CO.UK



Chaseley Drive, W4

£2,250 pcm

A ground floor purpose built 624 sq/ft Two Bedroom apartment, fitted with new carpets 6 months ago and situated in a popular Gated development, close to Gunnersbury station. The accommodation comprises; hall with storage cupboard, main double bedroom with updated en-suite shower room, further double bedroom, family bathroom, living/dining room and separate kitchen. Outside are well kept communal gardens, Gated Private Parking with allocated parking space. The location is within 5 minutes walk of Gunnersbury Station (District & Overground Lines) and Chiswick High Road, with an abundance of shopping/dining/transport facilities. The A4(M) in to Central London and out to Heathrow, is a few minutes drive. Available early February. Furnished. Hounslow C/T band E.

Stubbs Court, Chiswick, W4

Approximate Gross Internal Area = 58.0 sq m / 624 sq ft

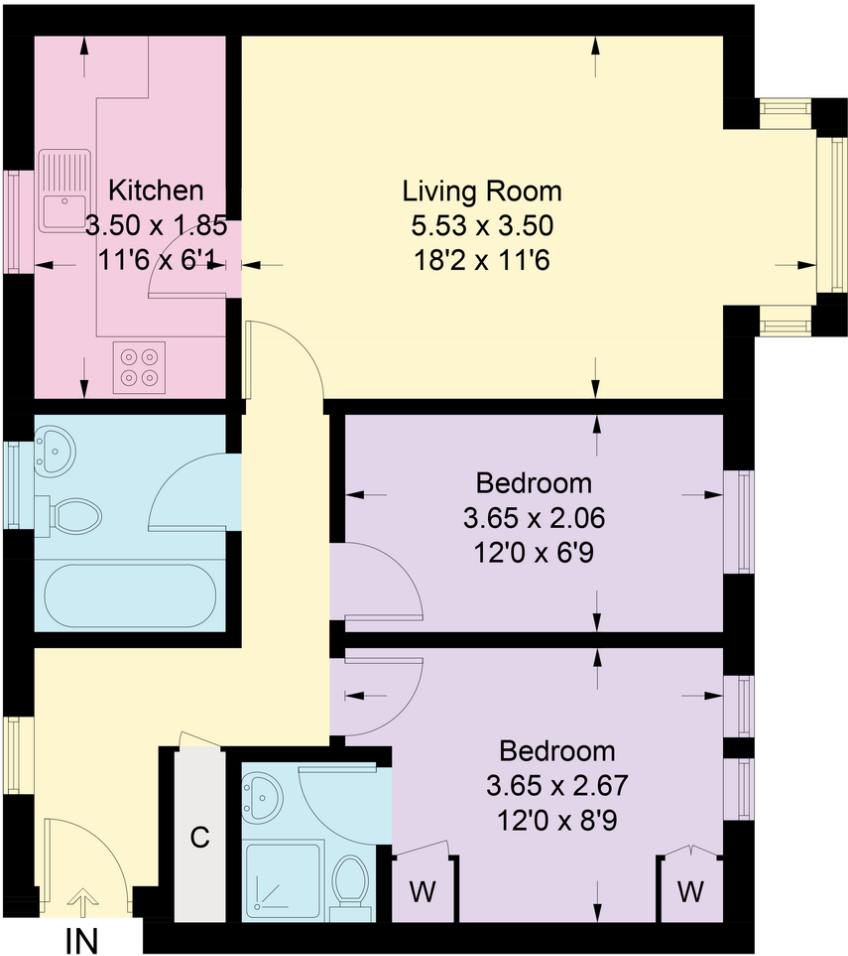


Illustration for identification purposes only, measurements are approximate, not to scale. floorplansUsketch.com © (ID672006)

EPC

