



SALES

LETTINGS

MANAGEMENT

chiswick@tatepartnership.co.uk

020 8996 0000

TATEPARTNERSHIP.CO.UK



Dukes House, W4

£1,865 pcm

A two double bedroom first floor apartment situated in this popular purpose-built Art Deco block. The accommodation has; entrance hall, two double bedrooms, generous living room, modern bathroom with shower over bath, fully fitted kitchen and back door onto small balcony with external stair down to private communal gardens, which back onto Chiswick House grounds. Walk to Chiswick House and the River Thames in just a few minutes. Chiswick High Road a 10-15 minute walk. Take the A4(M) heading West to Heathrow, or East into Knightsbridge. Richmond, a 10 minute drive along the A316. Available now, Part Furnished.

Dukes House, W4

Floor Plan

Approximate gross internal area
46 sq m / 490 sq ft

Paxton Road, W4

Approximate Gross Internal Area = 45.5 sq m / 490 sq ft

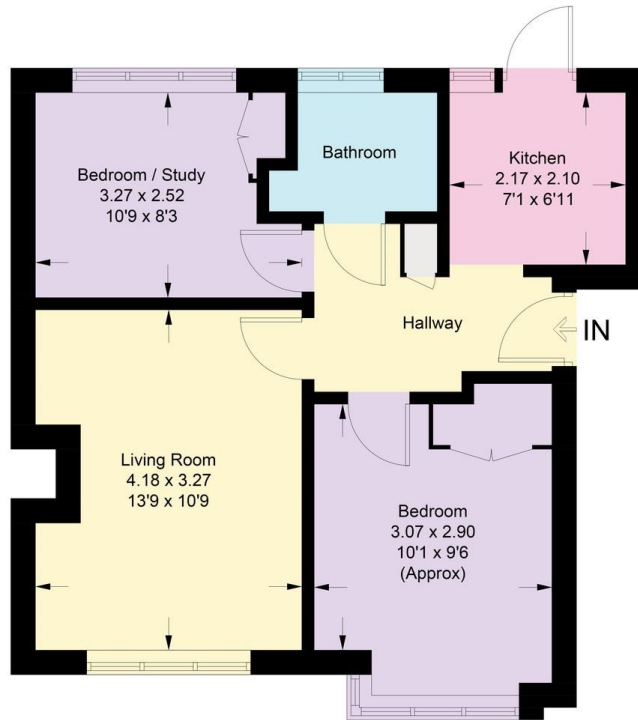
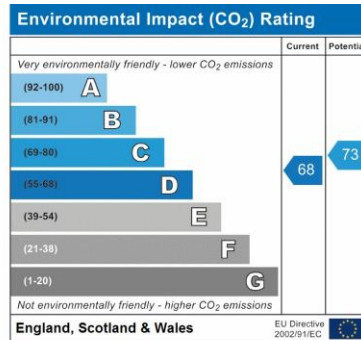
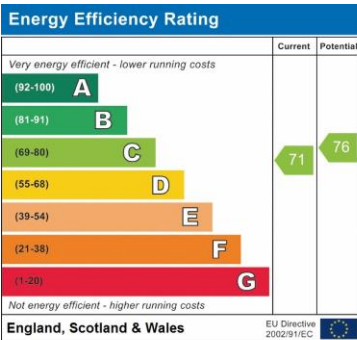


Illustration for identification purposes only, measurements are approximate, not to scale. floorplans4sketch.com © (ID1072682)

EPC



Address:
Dukes House, 6 - 8 Paxton Road