

One of West Somerset's most distinctive country houses



Denzel House

Crowcombe, Taunton, TA4 4BT

The nearby Quantock Hills



The original Edwardian house has been extended and improved to provide one of West Somerset's most distinctive houses







Denzel House occupies a peaceful country setting in a highly favoured area at the foot of the Quantock Hills. Taunton, the County Town of Somerset has a good shopping centre and a number of highly-respected independent schools including King's and Queen's Colleges, Taunton School and the Richard Huish Sixth Form College.

The property is set within the lower slopes of the Quantock Hills providing excellent walking and riding countryside. Wimbleball Lake provides dinghy sailing, canoeing and windsurfing and Clatworthy is well known for its fishing. The Brendon and the Blackdown Hills also provide wonderful countryside and landscapes nearby.









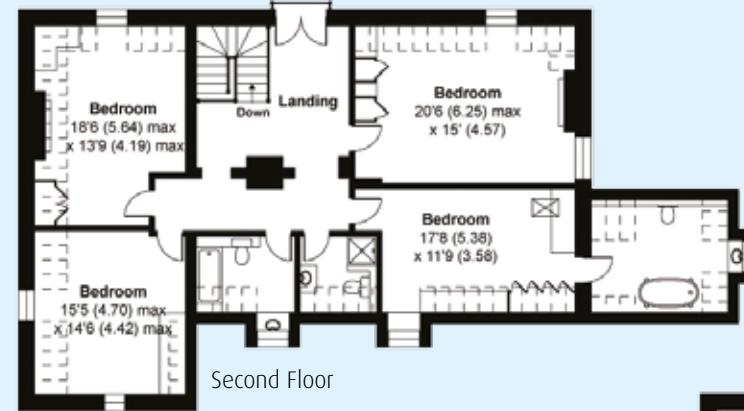
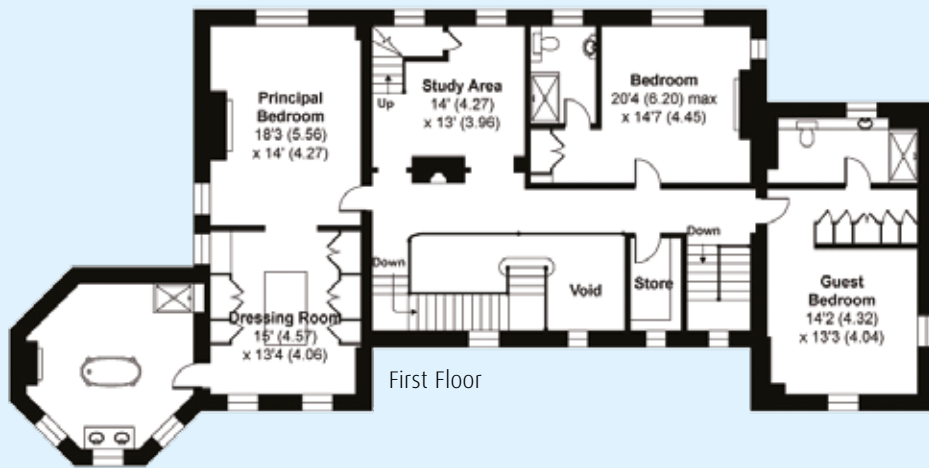
This fine country house was originally built in 1903 with a traditional exterior, but within lies a surprisingly contemporary and spacious combination of entertaining space, reception rooms and leisure facilities. With great attention to detail throughout and an elaborate specification, the property has excellent 'green' credentials with high levels of insulation, double glazed sash windows and air source heating.

A pleasing blend of traditional styles, including the family room at the heart of the house, enhanced with a beautiful kitchen, fitted by Charles Yorke, with walnut fronted furniture and a range of Wolf and Miele appliances. The leisure facilities include a beautifully designed indoor swimming pool, an all-weather tennis court and sports pavilion. The gardens provide a lovely tranquil setting and have been designed for ease of maintenance and include extensive lawns, and terraces.

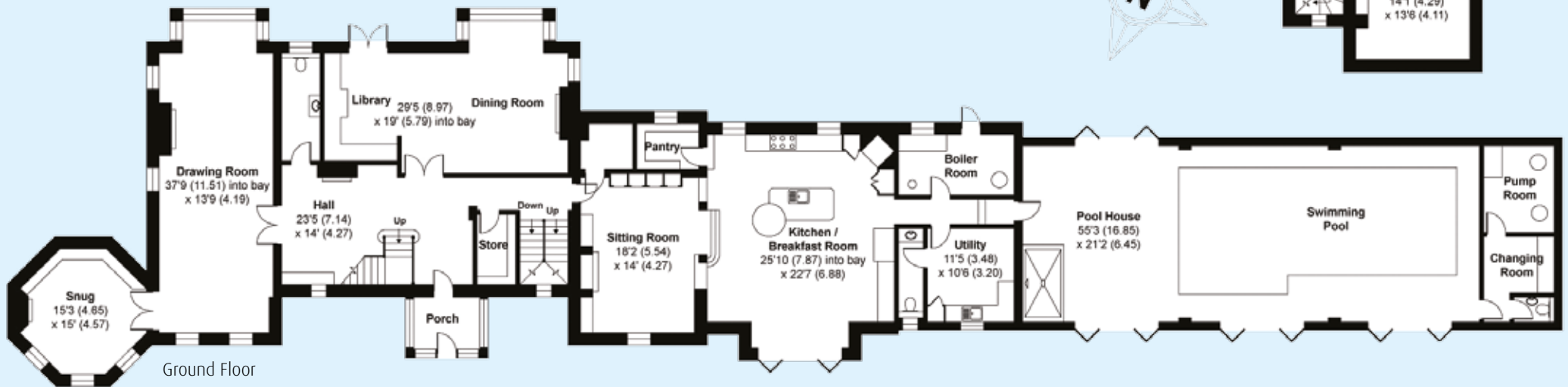
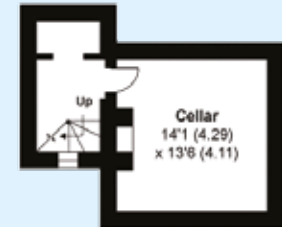
Denzel House

Gross internal area (approx): 728.7 sq.m / 7,844 sq.ft
(Excludes restricted head height and garage house and annexe)

For identification purposes only - Not to scale



Denotes restricted head height



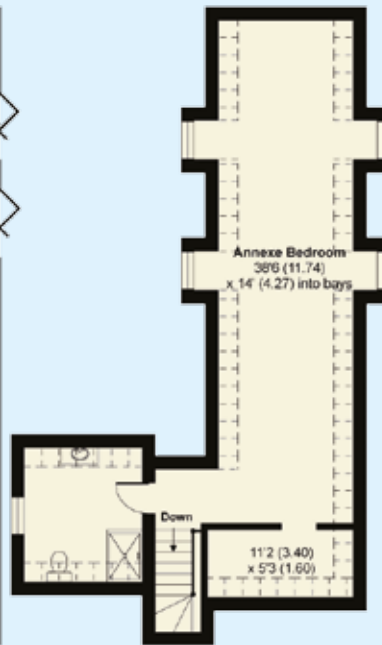
Pavilion



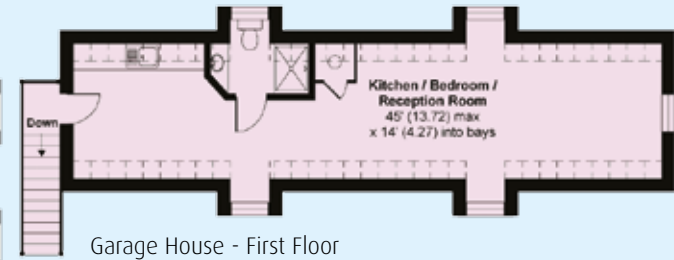
Pavilion



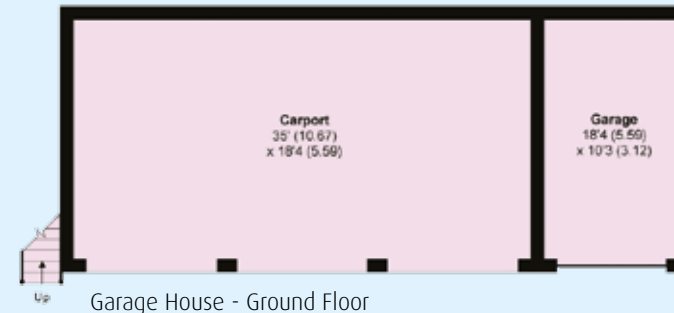
Pavilion - Ground Floor



Pavilion - First Floor



Garage House - First Floor



Garage House - Ground Floor

Denotes restricted head height

Services

Mains water and electricity. Private drainage.

Contents, Fixtures and Fittings

Unless specifically mentioned as included in these particulars, all contents, fixtures and fittings, garden ornaments and statues, carpets and curtains are specifically excluded from the sale. Certain items may be available by separate negotiation.

Directions: (TA4 4BT)

Proceed out of Taunton on the A358 in a northerly direction towards Williton & Minehead. Continue for about 9 miles and after passing the turning right to West Bagborough, proceed further for about a mile and look out for a turning to the left signposted to Crowcombe Station and Lydeard St.Lawrence.

Carry on down the road, through an avenue of trees, continue over the steam railway bridge and look out for the drive into Denzel House on the right.

Viewing

By prior appointment with the joint sole agents Jackson-Stops & Staff:

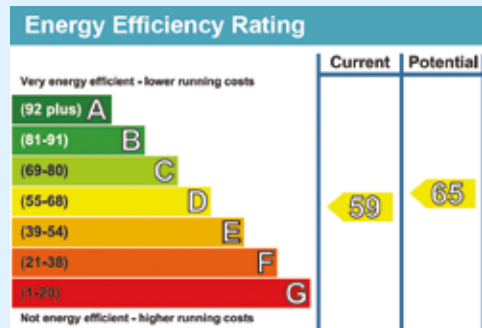
8 Hammet Street, Taunton,
Somerset, TA1 1RZ
Tel: 01823 325 144

or Savills,
The Forum, Barnfield Road, Exeter,
Devon, EX1 1QR
Tel: 01392 455755

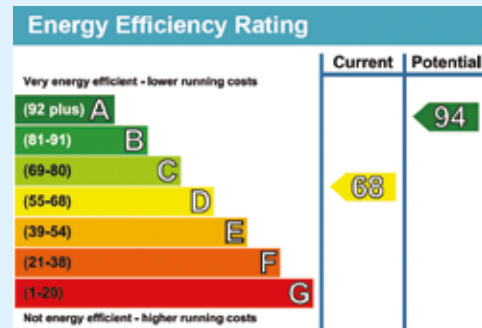




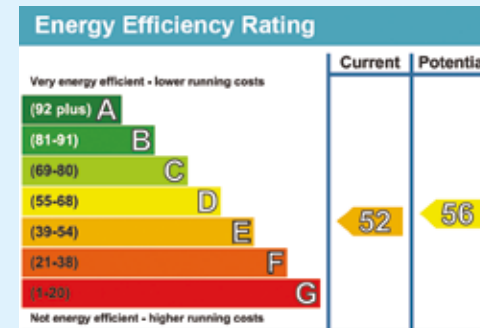
Main House



Pavilion



Top Floor Flat



Important Notice

Savills, Jackson-Stops & Staff and their clients and any joint agents give notice that:

1. They are not authorised to make or give any representations or warranties in relation to the property either here or elsewhere, either on their own behalf or on behalf of their client or otherwise. They assume no responsibility for any statement that may be made in these particulars. These particulars do not form part of any offer or contract and must not be relied upon as statements or representations of fact.
2. Any areas, measurements or distances are approximate. The text, photographs and plans are for guidance only and are not necessarily comprehensive. It should not be assumed that the property has all necessary planning, building regulation or other consents and Savills have not tested any services, equipment or facilities. Purchasers must satisfy themselves by inspection or otherwise. Photos taken May 2015 and February 2016.



Savills Exeter
The Forum, Barnfield Road,
Exeter EX1 1QR
exeter@savills.com
01392 455755



Jackson-Stops & Staff Taunton
8 Hammet Street,
Taunton TA1 1RZ
taunton@jackson-stops.co.uk
01823 325 144

