



146 Cotham Brow, Cotham, Bristol, BS6 6AE
£800 Per Calendar Month

**maggs
allen**

estate agents

****AVAILABLE NOW****

***GREAT LOCATION WALKING DISTANCE TO
GLOUCESTER/CHELtenham ROAD***

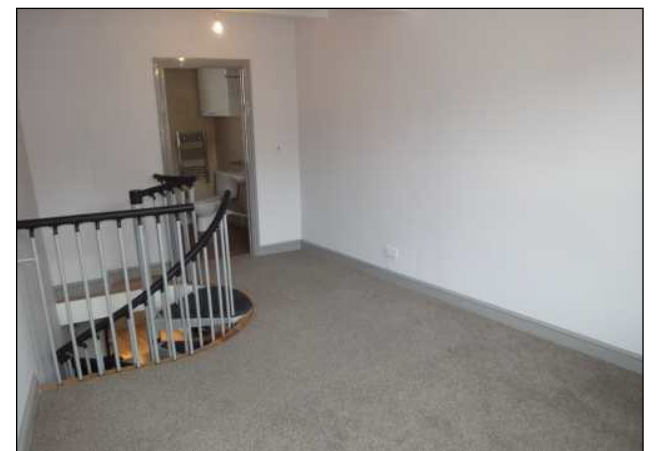
Offered on an unfurnished basis this quirky and contemporary 1 bedroom house is ideal for a professional single or couple wanting to live in the vibrant Gloucester Road area just minutes walk to Montpelier train station and a myriad of pubs and cafés.

The accommodation comprises of an open plan living room leading to the modern kitchen with integrated appliances and breakfast bar, dining area and separate utility space at the rear. To the first floor is a good-sized double bedroom and en-suite bathroom (shower over bath). Outside is a small patio area to the front with private gated access. Easy access to Gloucester/Cheltenham Road, city centre and Clifton. Council Tax Band B (information supplied by www.voa.gov.uk).

*Agency fees £360 inc vat for the first two applicants.

****Minimum household gross annual income required
£24,000pa**** Contact the office for further information.





0117 949 9000

60 Northumbria Drive, Henleaze, Bristol, BS9 4HW | www.maggsandallen.co.uk



Maggs & Allen use all reasonable endeavors to supply accurate property information in line with the Consumer Protection from Unfair Trading Regulations 2008. These property details do not constitute any part of the offer or contract and all measurements are approximate. It should not be assumed that this property has all the necessary Planning, Building Regulation or other consents. Any services, appliances and heating system(s) listed have not been checked or tested. Please note that in some instances the photographs may have been taken