



**SALES**

**LETTINGS**

**MANAGEMENT**

[chiswick@tatepartnership.co.uk](mailto:chiswick@tatepartnership.co.uk)

**020 8996 0000**

**TATEPARTNERSHIP.CO.UK**



**Upham Park Road, Chiswick**

**£4,500 pcm**

A substantial 1622sq/ft Victorian Town House, updated, refreshed and ready for early occupation. Arranged over 3 natural floors, the accommodation comprises; entrance hall, cloakroom, kitchen, 36ft open plan double living room with open plan conservatory leading to private rear garden. The first floor offers the master suite with en-suite shower room, further double bedroom with en-suite bathroom. The second floor offers two further double bedrooms and a separate bathroom. Upham Park Road runs directly off Chiswick High Road, central to all the transport, shopping and dining facilities. Stamford Brook and Turnham Green stations are within easy walking. Available Now, Unfurnished.

# Upham Park Road, Chiswick

## Floor Plan

Approximate gross internal area  
151 sq m / 1,622 sq ft

### Upham Park Road, W4

Approximate Gross Internal Area = 150.7 sq m / 1622 sq ft

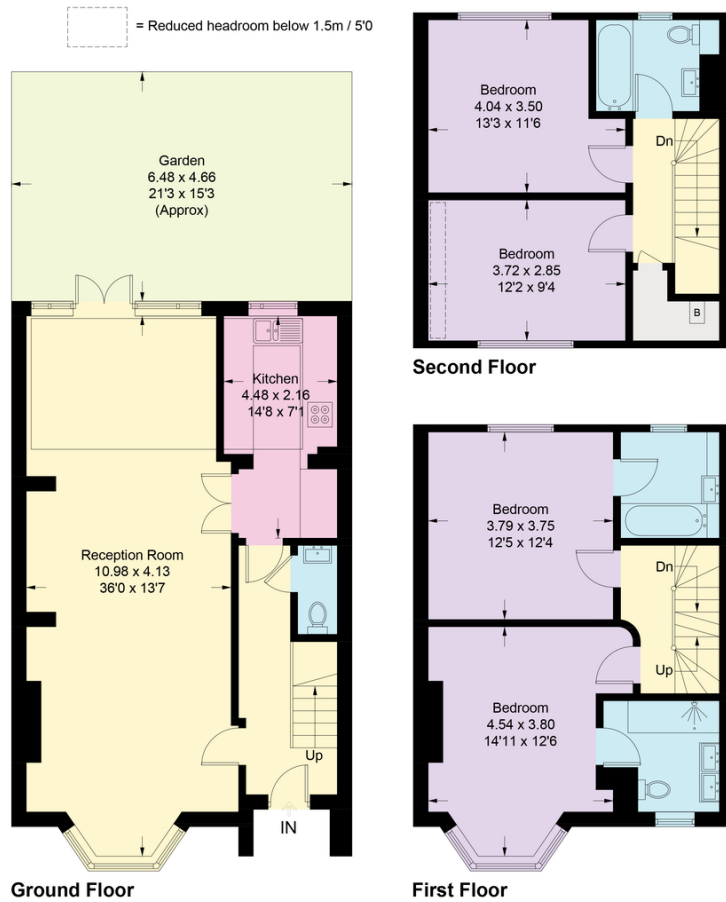


Illustration for identification purposes only, measurements are approximate, not to scale. floorplansUsketch.com © (ID1023675)

## EPC

