

Main Description

Located on the first floor of this modern apartment block close to the centre of Fowey. The apartment has access via a secure communal entrance hallway with first floor access provided via stairs or lift. Apt 14 is situated at the rear of the block and comes beautifully presented with chrome sockets and light fittings, a modern bathroom and a fully equipped modern kitchen in the open plan kitchen/dining/sitting room.

There are French doors which open out to a communal outside space. The apartment block is located close to the centre of Fowey with a reasonably level walk and is also located close to



Key Features

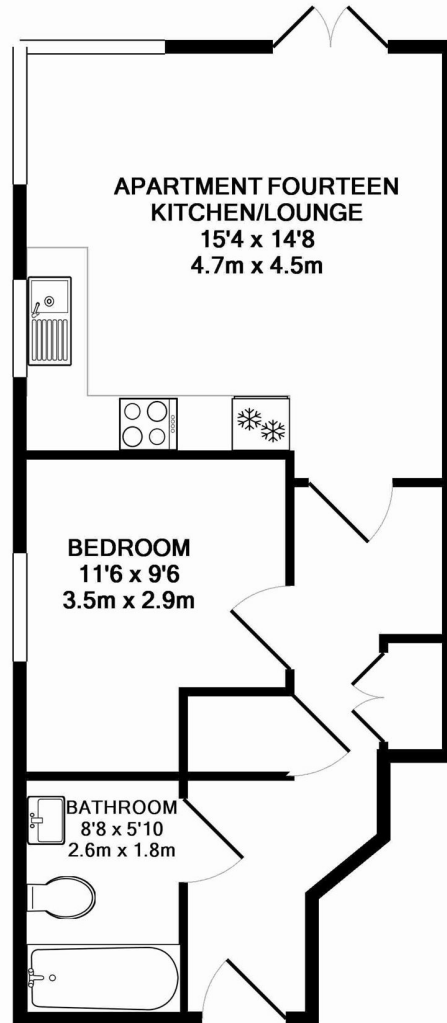
- One bedroom first floor apartment.
- Close to the centre of Fowey.
- Aluminium double glazed windows.
- Modern bathroom.
- Open plan main living space.
- Balcony.
- Fully equipped kitchen.
- Close to estuary and the public slipway.



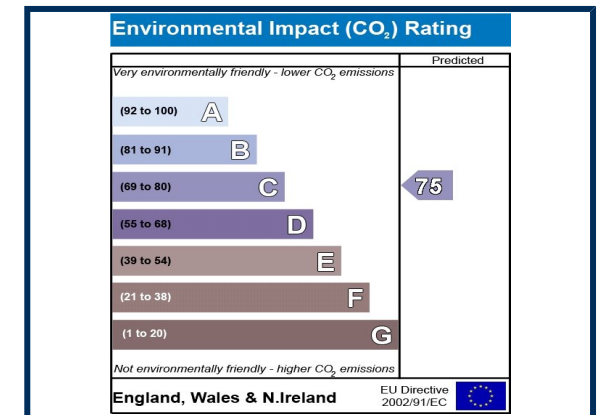
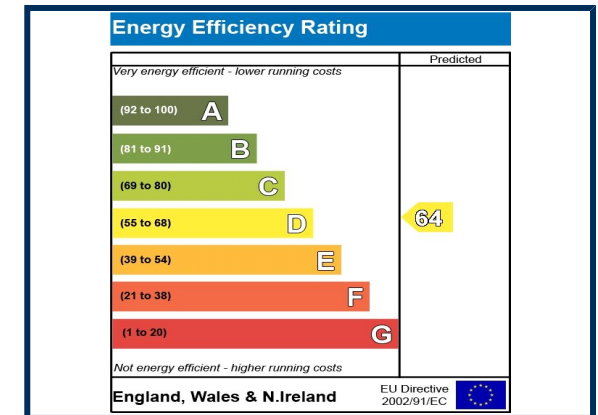
Caffa Mill slipway which gives easy access on to the estuary as well as where the Bodinnick car ferry lands. Also located close to the apartment are two public car parks.

Apartment 14
FOWEY, PL23 1AU

£180,000 Leasehold



Whilst every attempt has been made to ensure the accuracy of the floor plan contained here, measurements of doors, windows, rooms and any other items are approximate and no responsibility is taken for any error, omission, or mis-statement. This plan is for illustrative purposes only and should be used as such by any prospective purchaser. The services, systems and appliances shown have not been tested and no guarantee as to their operability or efficiency can be given
Made with Metropix ©2010



Location

Fowey is a bustling sailing port on the Fowey Estuary on the South Cornish coast, set in stunning countryside, with dramatic beaches nearby. Known for its sailing, walks, stunning views, and vibrant streets, Fowey is a gem in Cornwall. Inspiration to many of Daphne Du Maurier's dramatic stories it is home to the annual Fowey festival of words and music and the Royal sailing regatta. Fowey town centre has an eclectic mix of independent shops and colourful restaurants, and is a pleasure to explore.

Directions

From our office, proceed along Fore Street and follow the road out of the town and Blue Mill development sits opposite Caffa Mill car park on the left hand side.

Viewings

We accompany all viewings from Monday to Saturday, please call us on 01726 833000 to arrange a convenient time.

