



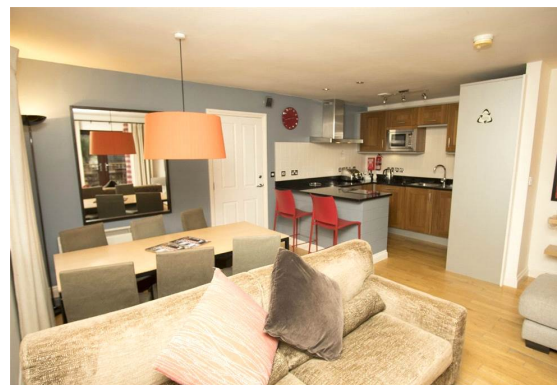
Main Description

This furnished two bedroom, modern lodge is located in a great position with views down on to St Austell Bay, with near by parking. The lodge has UPVC double glazed windows throughout, electric heating and a wooden floor in the main living area, both the bedrooms have en-suite bathrooms. There is a modern fully fitted kitchen with granite works surface and Bosch appliances. From the main sitting room large French doors give access on to the patio area which enjoys views down on to the sea.



Key Features

- Two bedroom.
- Detached holiday lodge.
- Located in the grounds of Trenyhton Manor.
- Views down on to St Austell Bay.
- The use of the manors facilities.
- Communal landscaped gardens.
- Near by off road parking.
- UPVC glazed windows.
- Electric heating.
- Fully furnished.

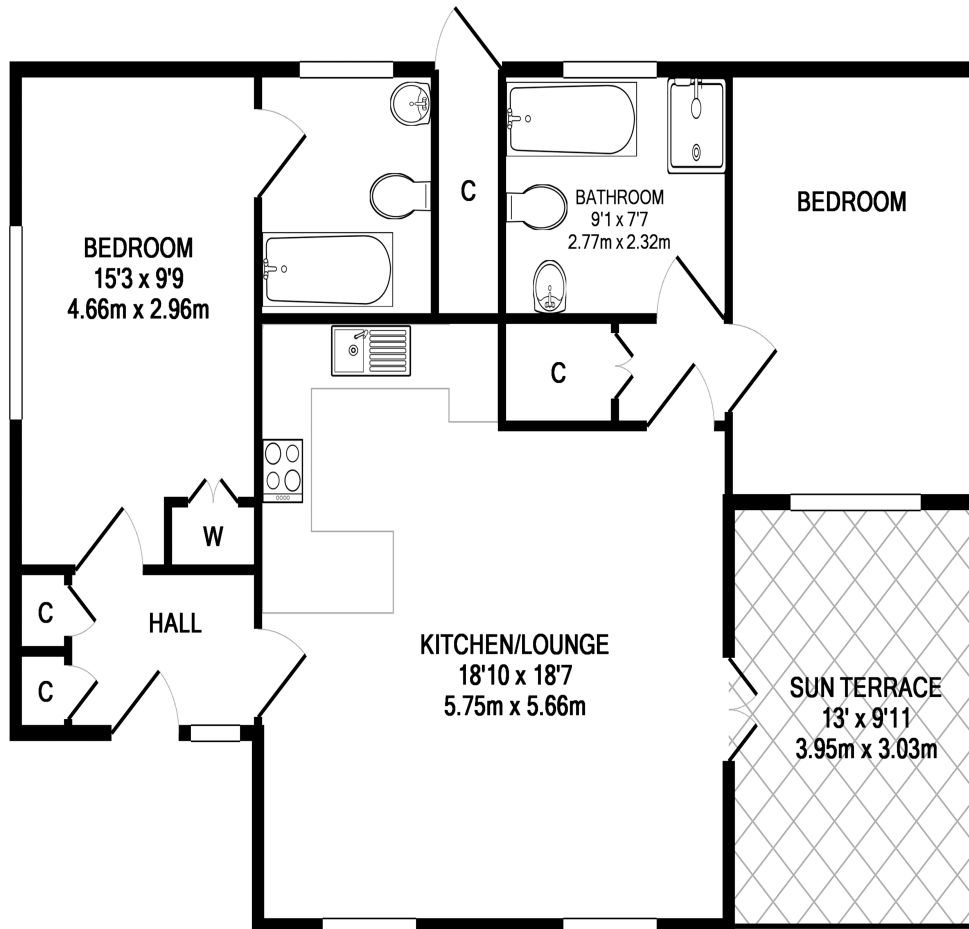


The lodge has the full use of the manor's facilities which include:- swimming pool, gym, restaurant and bars. The lodge is presently being let through Trenyhton Manor and Club le Costa. The new owner can either privately let the lodge as a holiday cottage or renegotiate a new contract with Club le Costa/Trenyhton Manor to let it on their behalf.

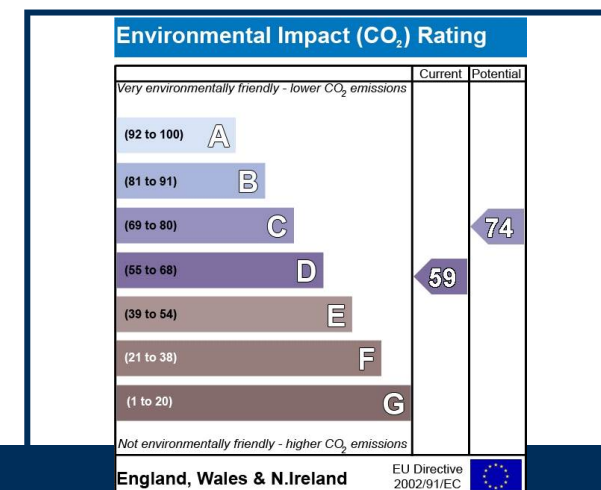
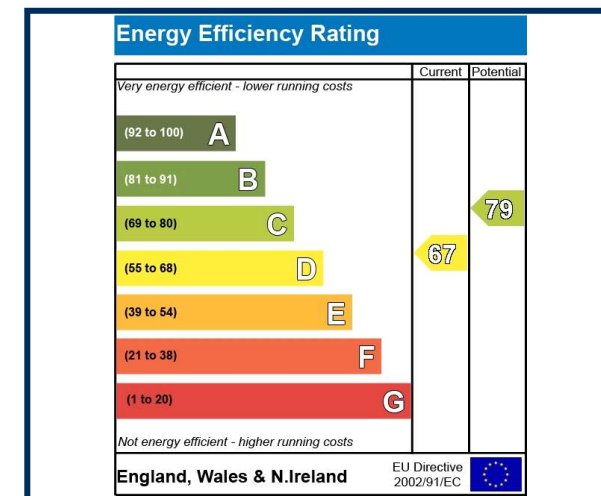


Lodge 504 Trenyhton Manor
Tywardreath, PL24 2TS

£195,000 Leasehold



Whilst every attempt has been made to ensure the accuracy of the floor plan contained here, measurements of doors, windows, rooms and any other items are approximate and no responsibility is taken for any error, omission, or mis-statement. This plan is for illustrative purposes only and should be used as such by any prospective purchaser. The services, systems and appliances shown have not been tested and no guarantee as to their operability or efficiency can be given
 Made with Metropix ©2014



Location

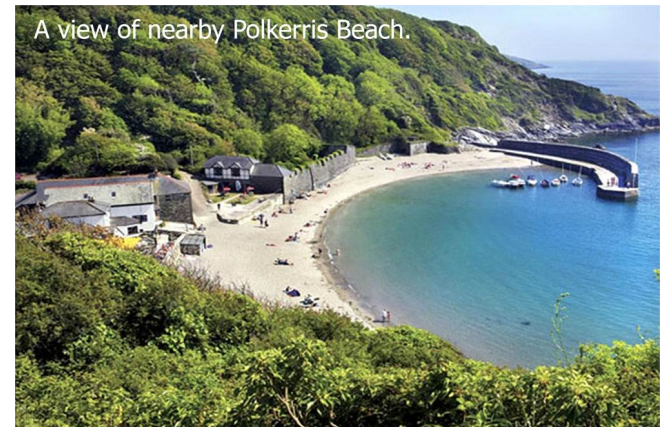
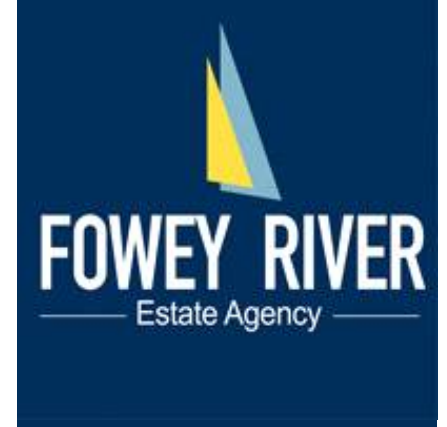
Tywardreath is an interesting old Cornish village, just inland from the Fowey Estuary, near the South Cornish Coast. It has a good mix of local shops, pub and church. There is a primary school and secondary education provided at nearby Fowey. Access out of Cornwall is easy with the main line train station at Par less than a mile away, the nearby A38 for road travel, or Newquay airport offering regular flights just 40 minutes away.

Directions

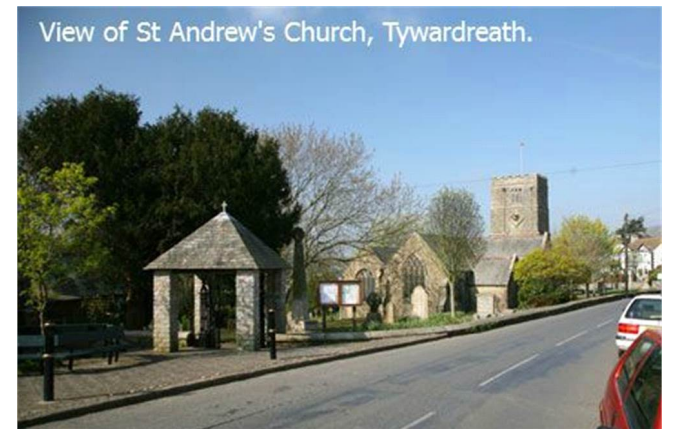
From our office proceed out of the town following the road up to the roundabout at the top of the hill, turn right heading towards Lostwithiel and after a couple of miles turn left signposted Tywardreath, after approximately 200 metres there is a turning on the left for Trenyhton Manor. Follow the drive to the end and the lodge is signposted.

Viewings

We accompany all viewings from Monday to Saturday, please call us on 01726 833000 to arrange a convenient time.



A view of nearby Polkerris Beach.



View of St Andrew's Church, Tywardreath.