



STONELEIGH STREET

NOTTING HILL W11



STONELEIGH STREET

NOTTING HILL W11

A quite unexpected contemporary styled house hidden behind its elegant Victorian facade. Beautifully appointed throughout and with enviable ceiling heights, the whole house is bathed in light from the large west facing bay windows. The ground floor comprises of a vast kitchen dining room with a day room opening out onto the private and well established garden. The raised ground floor continues the theme of generous entertaining space whilst the floors above provide for extremely comfortable and flexible accommodation.

Stoneleigh Street is an attractive street situated in a quiet backwater to the west of Ladbroke Grove. The area has a wealth of attractions including the world renowned Portobello Street market, Holland Park and just a short walk from the shopping and dining opportunities found at Westfield.



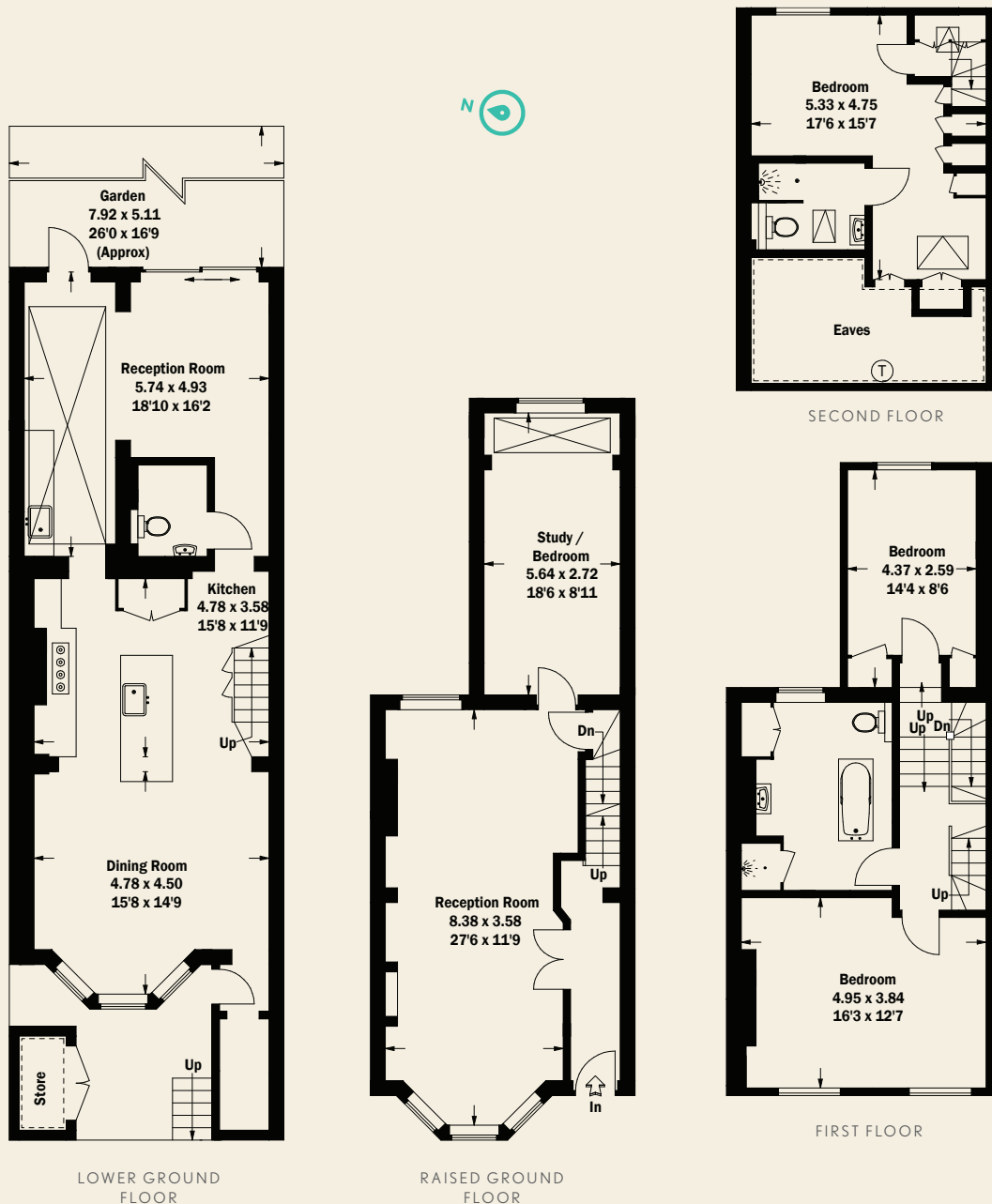
STONELEIGH STREET

NOTTING HILL W11

CONSUMER PROTECTION FROM UNFAIR TRADING REGULATIONS 2008. THIS BROCHURE AND THE DESCRIPTIONS AND MEASUREMENTS HEREIN DO NOT CONSTITUTE REPRESENTATION AND WHILST EVERY EFFORT HAS BEEN MADE TO ENSURE ACCURACY, THIS CANNOT BE GUARANTEED.

TENURE: FREEHOLD
GROSS INTERNAL AREA: 202 SQ M/2,170 SQ FT APPROX.
LOCAL AUTHORITY: ROYAL BOROUGH OF KENSINGTON & CHELSEA
ENERGY RATING: D

3 BEDROOMS, EN SUITE SHOWER ROOM, BATHROOM, 2 RECEPTION ROOMS, KITCHEN, DINING ROOM, STUDY/BEDROOM 4, UTILITY ROOM, GARDEN.



LADBROKE GROVE
T 020 7221 0330
126 LADBROKE GROVE LONDON W10 5NE
E LADBROKEGROVE@BECTIVE.CO.UK

WWW.BECTIVE.CO.UK

BECTIVE
-LESLIE MARSH-