



## A PRETTY COTTAGE SITUATED CLOSE TO THE BEACH IN RUNSWICK BAY

---

CLAYMOOR COTTAGE  
RUNSWICK BAY, WHITBY, TS13 5HU

Freehold

savills

## A PRETTY COTTAGE SITUATED CLOSE TO THE BEACH IN RUNSWICK BAY

CLAYMOOR COTTAGE RUNSWICK BAY,  
WHITBY, TS13 5HU

### Freehold

sitting/dining room ♦ kitchen ♦ bedroom ♦ bathroom ♦  
courtyard garden ♦ EPC rating = Listed Building

### Situation

Runswick has long been a favourite holiday destination with its popular beach, rugged cliffs and pretty cottages.

The cottage is within a short walk from the head of the small village road. The well known cafe and the Royal Hotel are close by overlooking the bay.

At the foot of the bank there is private and public car parking.

The village is a short drive from the historic parts of Whitby and stunning scenery of the North Yorkshire Moors National Park.

### Description

Claymore Cottage is an attractive traditional property nestling in one of the many alleyways but very close to the fabulous viewing area overlooking the bay. Currently arranged with one large bedroom but with potential to create two bedrooms subject to the necessary consents.

Features include a good sized living room with open fire, opening through to the kitchen. The cottage also has the great advantage of a large rear patio garden, with delightful village views.

### Outgoings:

Mains water, electricity and drainage. Electric heating.

### Viewing:

Strictly by appointment with Savills



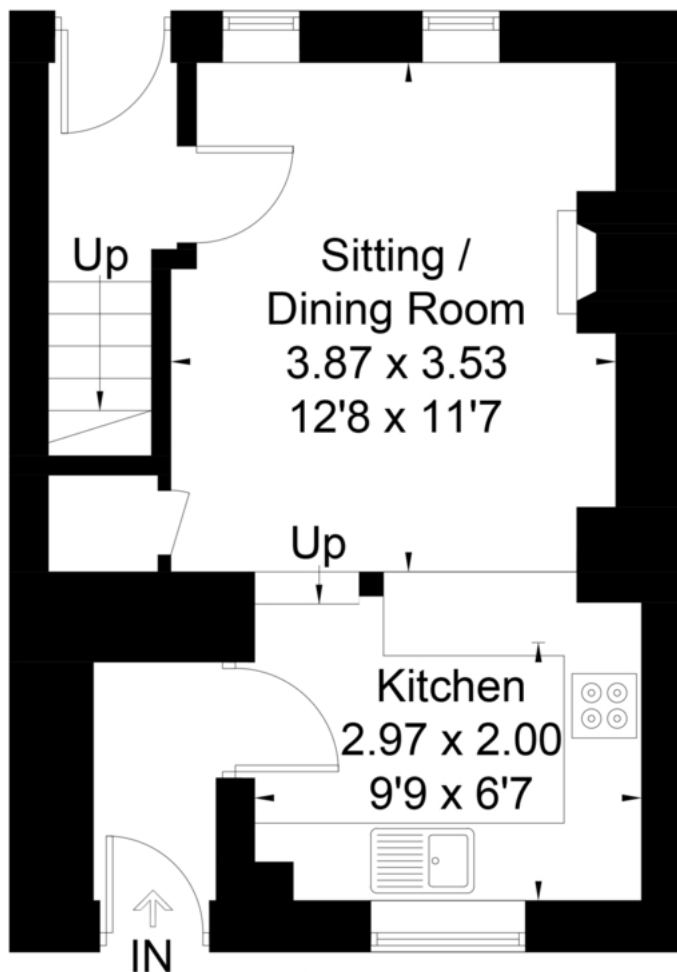


# Claymore Cottage, Runswick, Saltburn-By-The-Sea, TS13 5HU

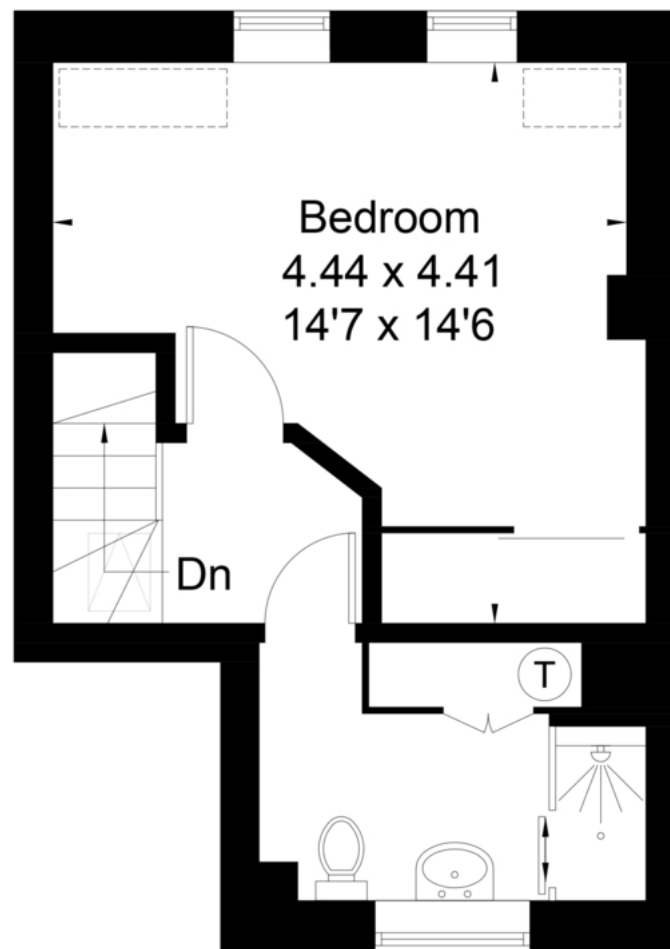
Gross Internal Area (approx) = 54.6 sq m / 588 sq ft

For identification only. Not to scale.

© Floorplanz Ltd



## Ground Floor



## First Floor

Savills York  
york@savills.com  
01904 617 820

[savills.co.uk](http://savills.co.uk)

Important notice: Savills, their clients and any joint agents give notice that 1: They are not authorised to make or give any representations or warranties in relation to the property either here or elsewhere, either on their own behalf or on behalf of their client or otherwise. They assume no responsibility for any statement that may be made in these particulars. These particulars do not form part of any offer or contract and must not be relied upon as statements or representations of fact. 2: Any areas, measurements or distances are approximate. The text, photographs and plans are for guidance only and are not necessarily comprehensive. It should not be assumed that the property has all necessary planning, building regulation or other consents and Savills have not tested any services, equipment or facilities. Purchasers must satisfy themselves by inspection or otherwise. 61024041 : 90955 : SL