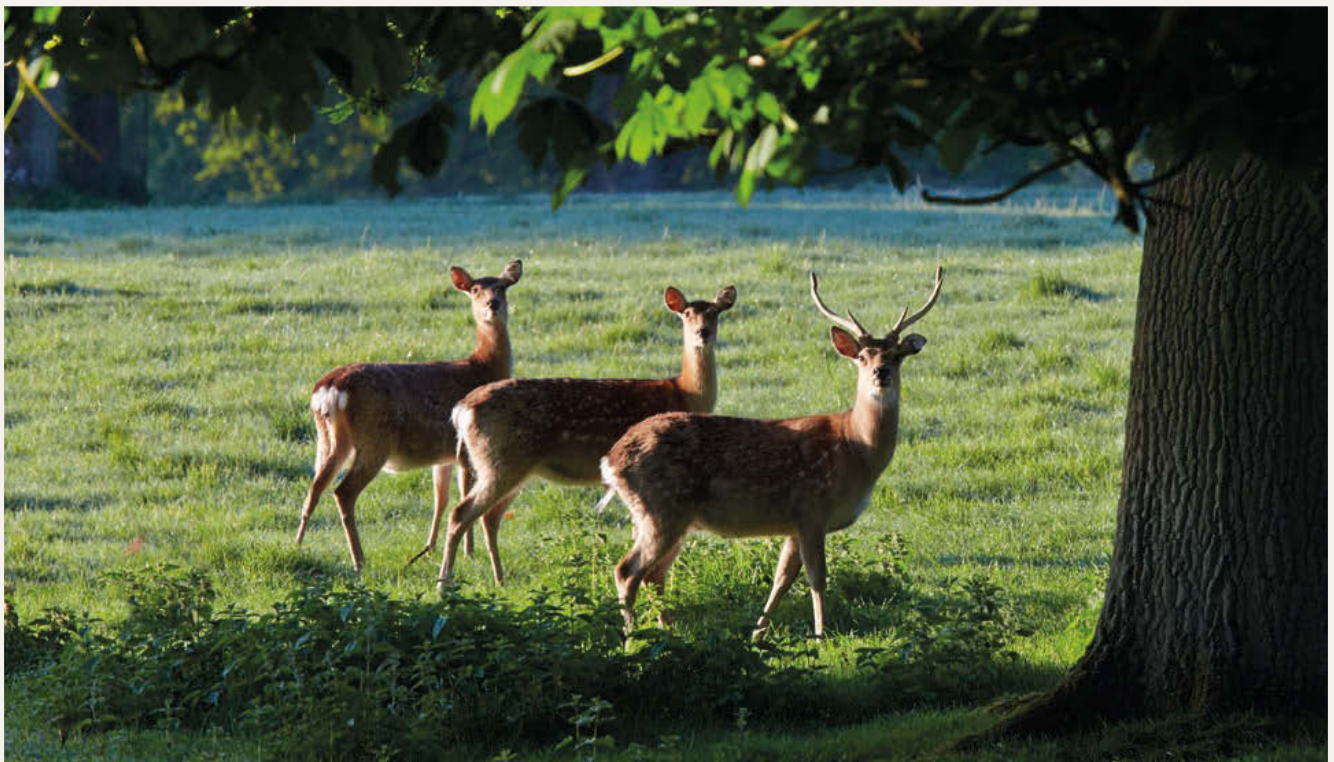


CORNBURY HOUSE

CHARLBURY • CHIPPING NORTON • OXFORDSHIRE



Savills Country Department
33 Margaret Street, London, W1G 0JD
Tel: +44 (0) 207 016 3780
Contact: Crispin Holborow
cholborow@savills.com
www.savills.co.uk



Bidwells Oxford
Seacourt Tower, WestWay, Oxford, OX2 0JJ
Tel: +44 (0) 1865 790 116
Contact: Paul Allen
paul.allen@bidwells.co.uk
www.bidwells.co.uk



CORNBURY HOUSE

CHARLBURY • CHIPPING NORTON • OXFORDSHIRE

*Charlbury 1 mile, Chipping Norton 7 miles, Oxford 15.5 miles, London 70 miles
(All distances are approximate)*

DEVS NOBIS HÆC OTIA FECIT
“GOD MADE THIS PLEASANT PLACE FOR US”

The House

Cornbury is a beautiful stone built Cotswold country house and is steeped in history. The original Tudor house was improved in the 1630's with the addition of the Southern facade by Nicholas Stone for the Earl of Danby, internally centred on a great hall. In the 1660's the then incumbent Earl of Clarendon employed Hugh May to create a new facade, also in the Classical style, at right angles to Stone's facade.

The current internal layout was set out in the 1960's and subsequently decorated by the renowned interior designer, John Fowler.

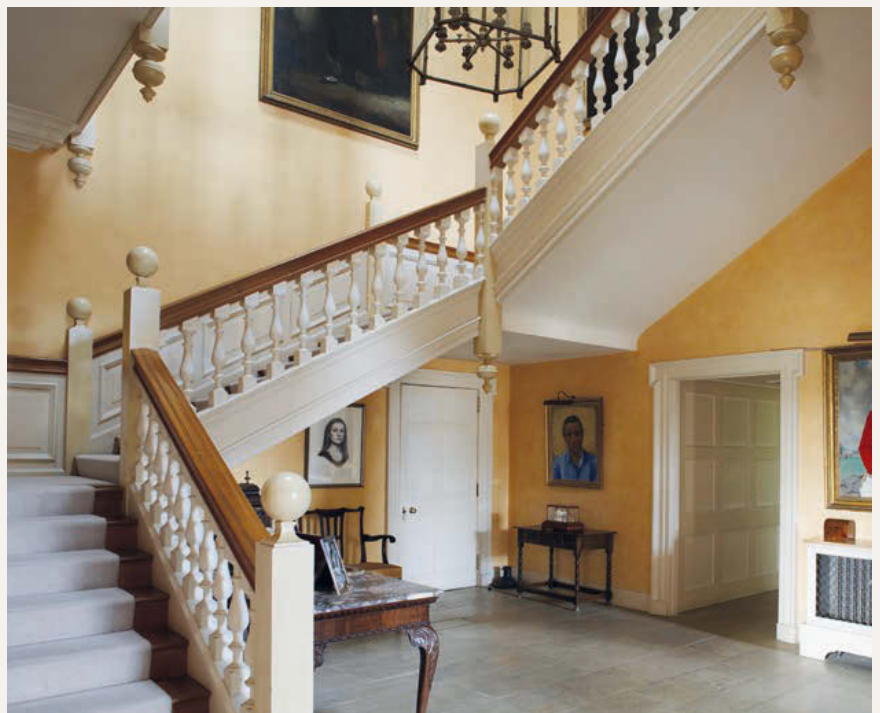
The ground floor of Cornbury House consists of four formal reception rooms, each with its own style and all with the grandeur befitting the architecture of the house. Along with the impressive dining room there is an atmospheric library, several studies and a modern family kitchen. On the first floor all the principal bedroom suites have open aspects over the surrounding gardens and parkland.

In addition to these rooms there are service rooms on the ground floor, a further six bedrooms on the first, large cellars and a second floor with attic rooms. Three bedroom Nursery Cottage adjoins the service wing.

The Setting

The house sits within formal gardens that lie predominantly to the west of the house. These include a swimming pool, formal gardens and total around 13 acres.

The setting of Cornbury can compete with the noblest houses in the Cotswolds. It is surrounded by the Deer Park, with aspects towards Charlbury and Wychwood Forest.





The Area

Cornbury's rural Cotswold setting is complimented by its proximity to the excellent local towns of Charlbury, Chipping Norton and Woodstock.

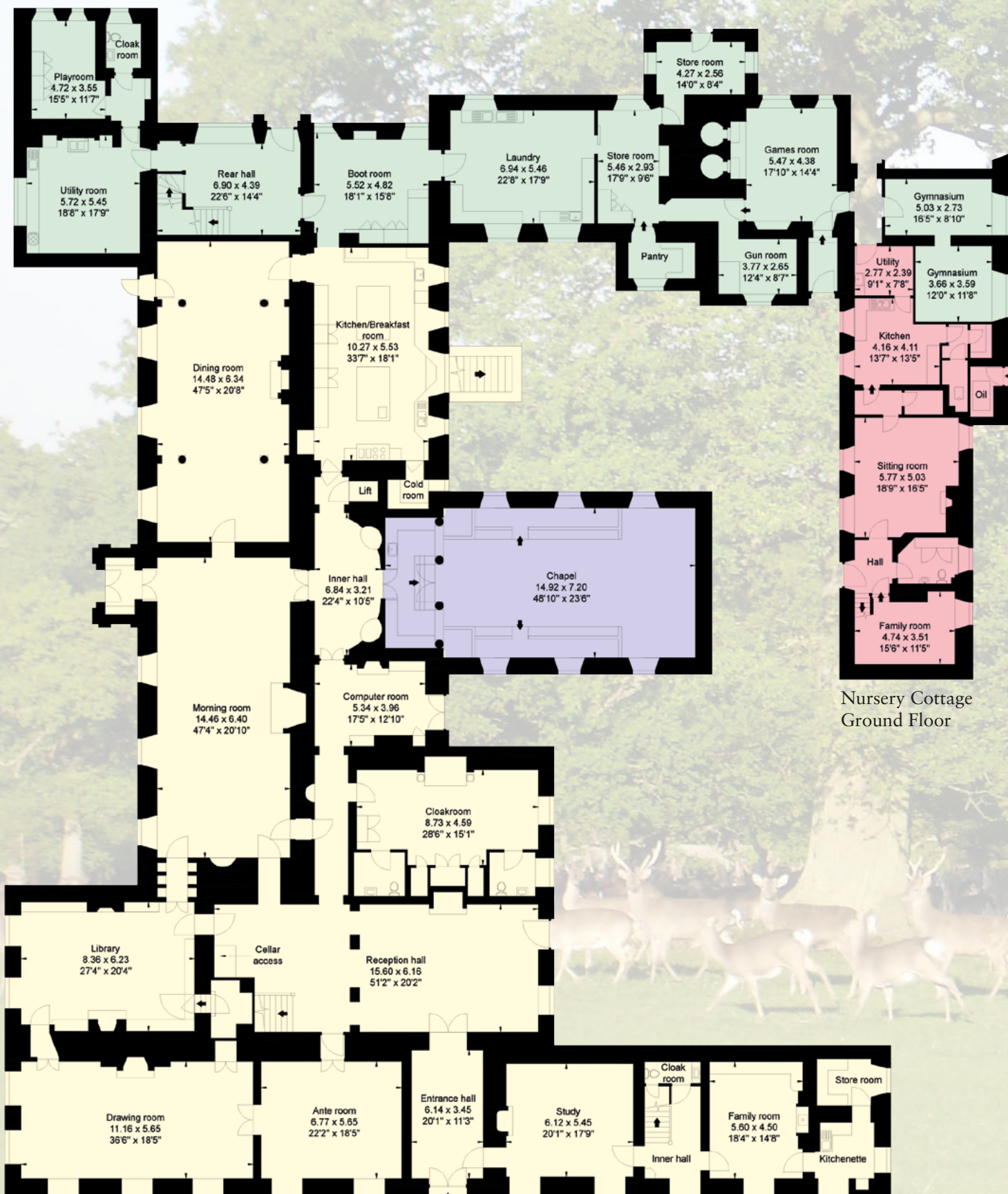
Cornbury is well located for communications with regular train services to London from Charlbury station from 71 minutes and fast trains from Bicester North from 40 minutes.

Sporting activities in the area include hunting with the Heythrop, racing at Cheltenham, Stratford and Warwick and golf at Heythrop Country Club and Spa.

Oxfordshire is well known for its schools including The Dragon, St Edwards School and Magdalen College School in Oxford along with Cothill and Radley just outside. Oxford is home to the world renowned university and is a major centre with all the expected shopping and recreational facilities associated with a city.







Nursery Cottage
Ground Floor

Ground Floor

CORNBURY HOUSE

Gross internal area (approx.)

Ground floor principal reception rooms - 863 sq m (9,290 sq ft)

Ground floor service rooms/Gymnasium - 313 sq m (3,369 sq ft)

First floor principle bedrooms/bathrooms - 855 sq m (9,204 sq ft)

First floor staff rooms - 257 sq m (2,765 sq ft)

Cellar - 212 sq m (3,359 sq ft)

Chapel/Gallery - 115 sq m (1,238 sq ft)

Second floor - 689 sq m (7,416 sq ft)

Nursery Cottage - 160 sq m (1,723 sq ft)

For identification purposes only. Not to scale.

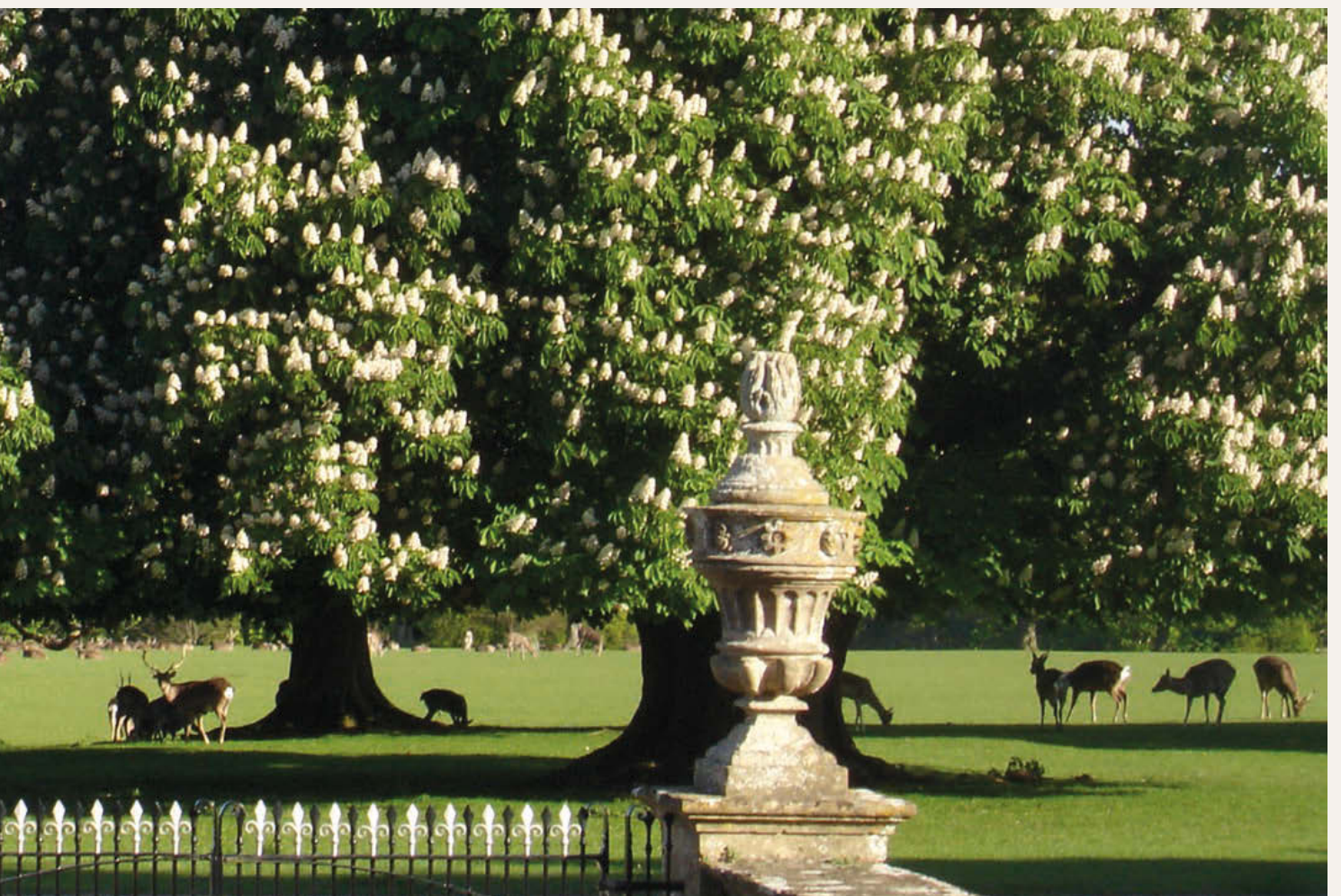
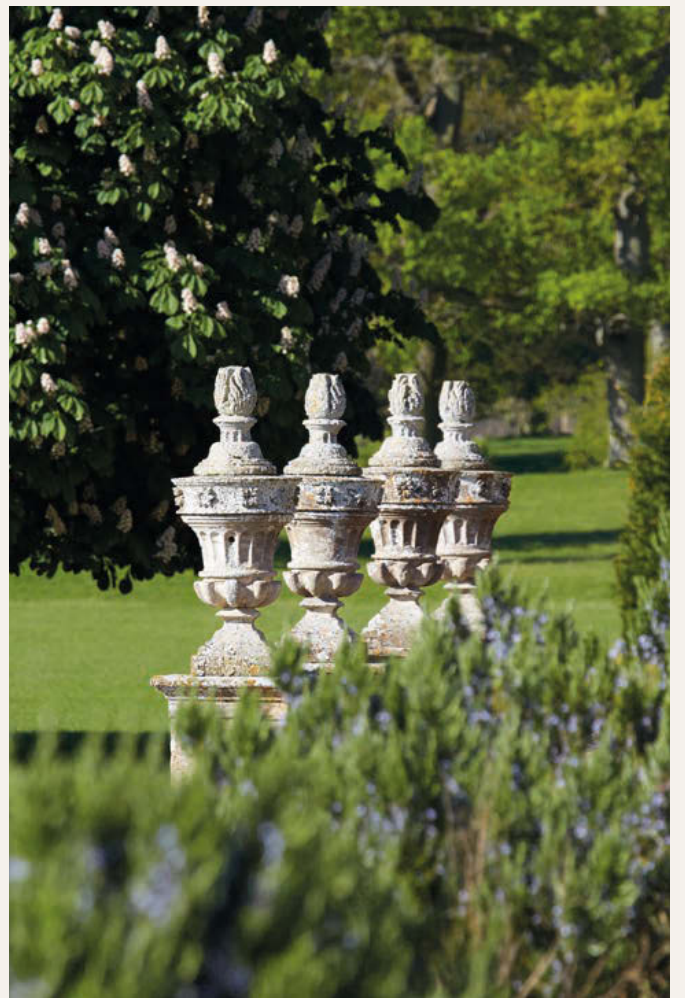


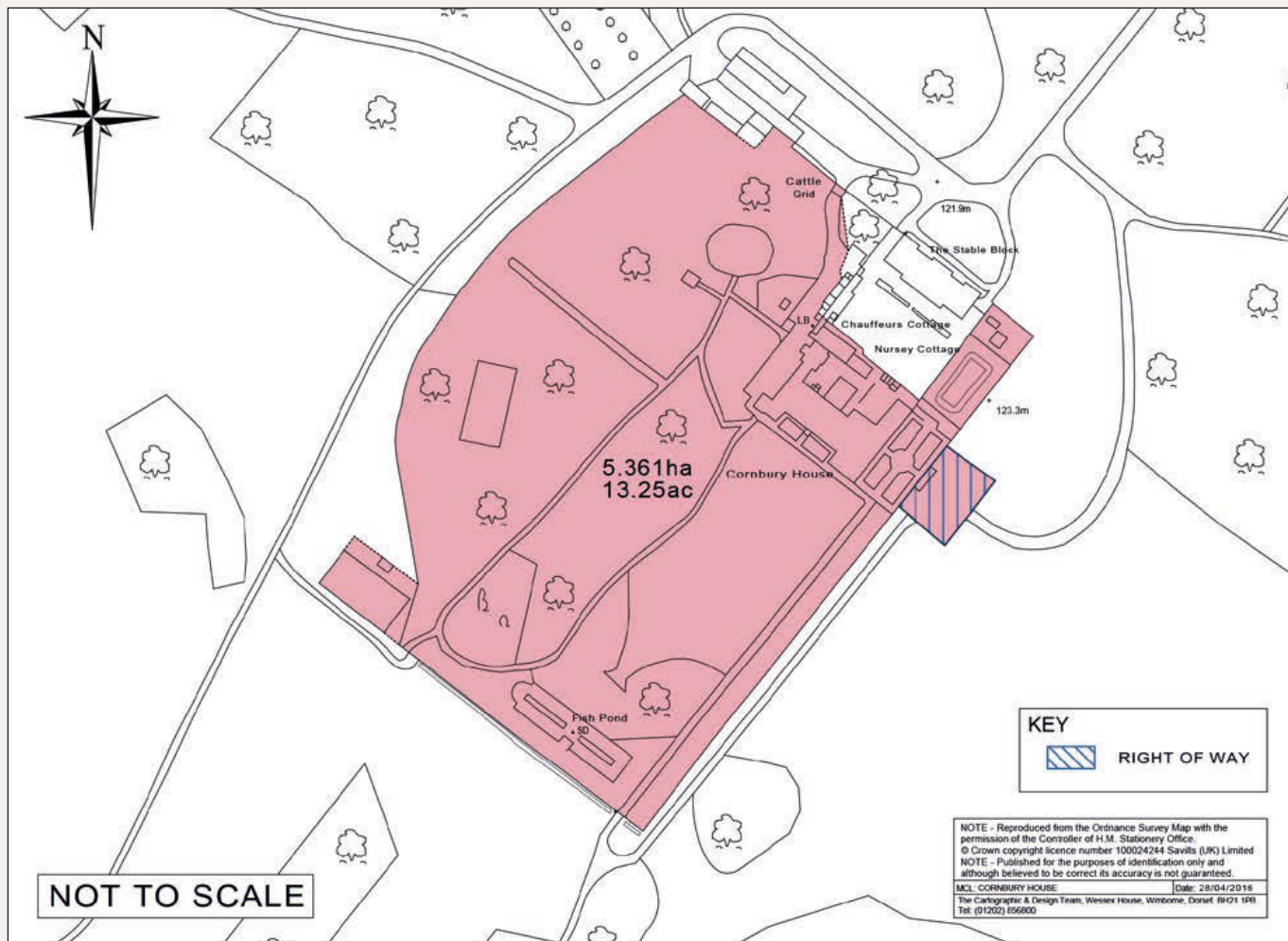
Nursery Cottage
First Floor













IMPORTANT NOTICE Savills and their clients give notice that: 1. They are not authorised to make or give any representations or warranties in relation to the property either here or elsewhere, either on their own behalf or on behalf of their client or otherwise. They assume no responsibility for any statement that may be made in these particulars. These particulars do not form part of any offer or contract and must not be relied upon as statements or representations of fact. 2. Any areas, measurements or distances are approximate. The text, photographs and plans are for guidance only and are not necessarily comprehensive. It should not be assumed that the property has all necessary planning, building, regulation or other consents and neither Savills have not tested any services, equipment or facilities. Purchasers must satisfy themselves by inspection or otherwise. 3. The reference to any mechanical or electrical equipment or other facilities at the property shall not constitute a representation (unless otherwise stated) as to its state or condition or that it is capable of fulfilling its intended function, and prospective purchasers/tenants should satisfy themselves as to the fitness of such equipment for their requirements.

Photographs taken from 2012 and 2016. 16/04/29 CH.
Kingfisher Print and Design 01803 867087.

