



**SALES**

**LETTINGS**

**MANAGEMENT**

[chiswick@tatepartnership.co.uk](mailto:chiswick@tatepartnership.co.uk)

**020 8996 0000**

**TATEPARTNERSHIP.CO.UK**



**Chiswick High Road, London**

**£1,895 pcm**

With accommodation extending to 687sq/ft, this a sizeable first floor two bedroom High Street apartment. Communal stairs to first floor; entrance hall, two Double Bedrooms both with fitted wardrobes, sizeable 18ft Living Room, separate Kitchen, Bathroom with bath and shower cubicle. Wooden and tiled floors throughout. Living here everything is on your doorstep. Good transport, good shopping, good dining. Turnham Green tube station is just 5mins walk. Available Late August. Unfurnished.

### Chiswick High Road, W4

Approximate Gross Internal Area = 63.8 sq m / 687 sq ft

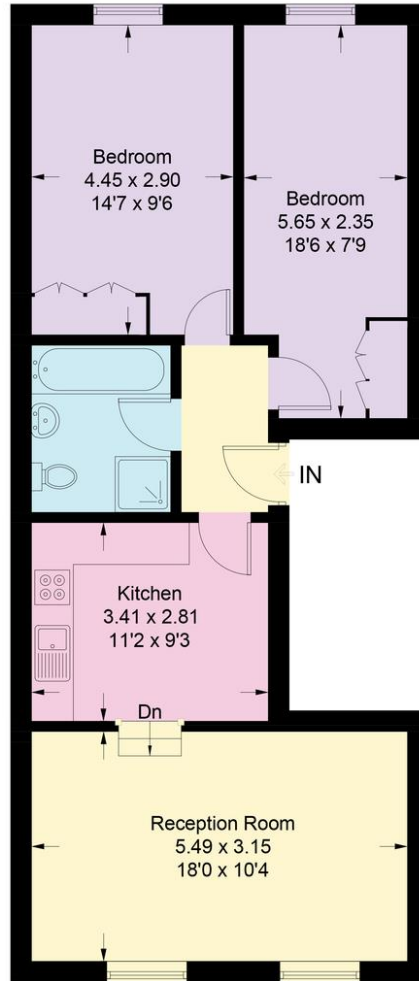
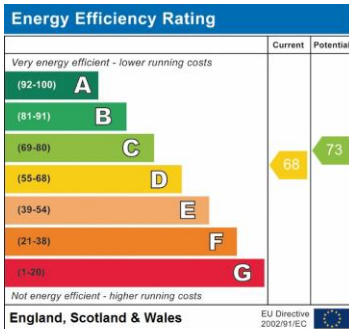


Illustration for identification purposes only, measurements are approximate, not to scale. floorplansUsketch.com © (ID97623)

## EPC



Address:  
Chiswick High Road

