



Weston-on-the-Green
Oxfordshire

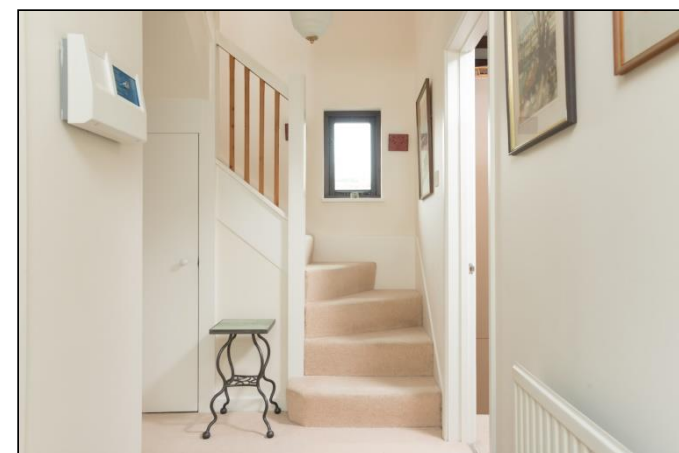
Weston-on-the-Green, Oxfordshire

A Well Presented Two/Three Bedroom Detached Property in the Sought After Village of Weston-on-the-Green.

The accommodation briefly comprises: Entrance Hall, Sitting Room, Kitchen /Dining Room, Three Bedrooms and Family Bathroom.

Outside there is a Double Garage with Light and Power and a Walled Rear Garden.

Weston-on-the-Green is a civil parish and village approximately 5 miles south-west of Bicester. The village has two public houses and a country house hotel with fine dining restaurant. In addition to the village store/post office there are a variety of local shops, including the Milk Shed and Manor Farm. Bicester designer shopping outlet is only a 10 minute drive away.

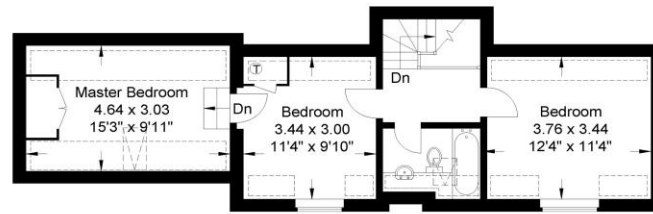
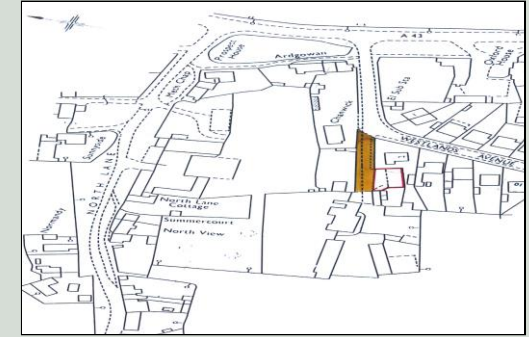




- Entrance Hall
- Living Room
- Kitchen/Dining Room
- Cloakroom
- Three Bedrooms
- Bathroom
- Enclosed Rear Garden
- Double Garage
- Oil Central Heating
- Double Glazed Windows
- No Onward Chain



Price Guide: £395,000



First Floor



Ground Floor

Approximate Gross Internal Area
117.13 sq m / 1261 sq ft
Illustration for Identification Purposes Only,
Measurements are Approximate, not
to scale.



Local Authority
Cherwell District Council

Tenure
Freehold

Additional Information
Bicester c. 5 miles
Deddington c. 12 miles
Chipping Norton c. 16 miles
Banbury c. 20 miles
Oxford c. 10 miles
Birmingham c. 68 miles
London c. 62 miles
Oxford Parkway c. 15 mins
London via Bicester North c. 1 hour
Oxford to Paddington c.1 hour



Market House, Market Square, Deddington, Oxfordshire, OX15 0SB
Tel: 01869 338898
Email: deddington@mark-david.co.uk
www.mark-david.co.uk

Branches also at: Banbury, Chipping Norton & London

Important Notice

Mark David Estate Agents for themselves and their clients give notice that:-

1. They are not authorised to make or give representation or warranty in relation to this property, either on their own behalf or on behalf of the Seller. They assume no responsibility for any statement made in these particulars. These particulars do not form part of any offer or contract and must not be relied upon as statements or representations of fact.
2. Whilst every attempt has been made to ensure the accuracy of the floorplan contained here, measurements of doors, windows, rooms and any other items are approximate and no responsibility is taken for any error, omission, or mis-statement.
3. All areas, measurements or distances are approximate. The particulars are intended for guidance only and are not necessarily comprehensive. A wide angle lens may have been used in photography. Mark David Estate Agents have not tested appliances or services and it should not be assumed that the property has all necessary planning, building regulation and other consents. Buyers must satisfy themselves with the property by inspection or otherwise.
4. Reference to any mechanical or electrical equipment does not constitute a representation that such equipment is capable of fulfilling its function and prospective Buyers must make their own enquiries.
5. They have no responsibility for any expenses or costs incurred by prospective Buyers in inspecting properties which have been sold, let or withdrawn. Applicants are advised to contact the Agent to check availability and any other information of particular importance to them, prior to inspecting the property, particularly if traveling some distance.