



NEW HEREFORD HOUSE
MAYFAIR W1

A STUNNING DUPLEX PENTHOUSE OF 2,578 SQUARE FEET WITH A PRIVATE TERRACE AND FANTASTIC VIEWS ACROSS THE LONDON SKYLINE



The Penthouse is presented in good condition within a superb 24 hour portered building, offering truly spacious accommodation, comprising of a large south west facing double reception room, fully fitted eat-in kitchen and four double bedrooms (three en-suite).

With far reaching southerly views over the Mayfair rooftops to be enjoyed from a private terrace, this Penthouse is ideal for entertaining.

Surrounded by leading hotels, including Claridges and The Dorchester, the internationally acclaimed shopping districts of Bond Street and Mount Street, and renowned establishments such as Annabel's and Harry's Bar, Mayfair is widely regarded as one of London's most prestigious residential addresses, and has long been recognised as a highly desirable and sought after location in which to reside.



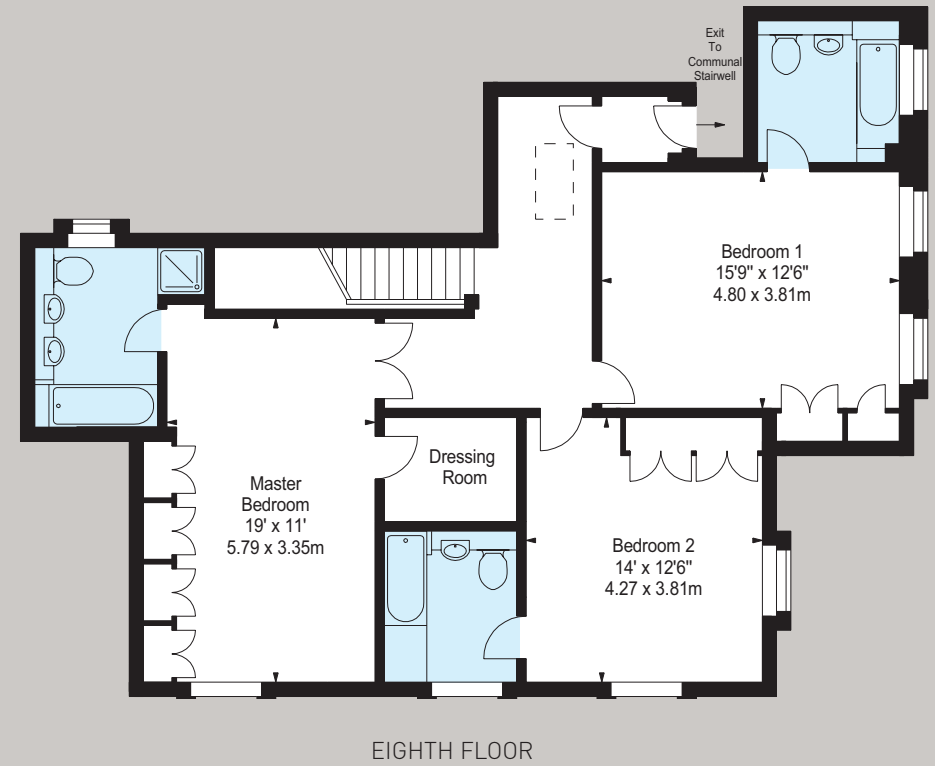
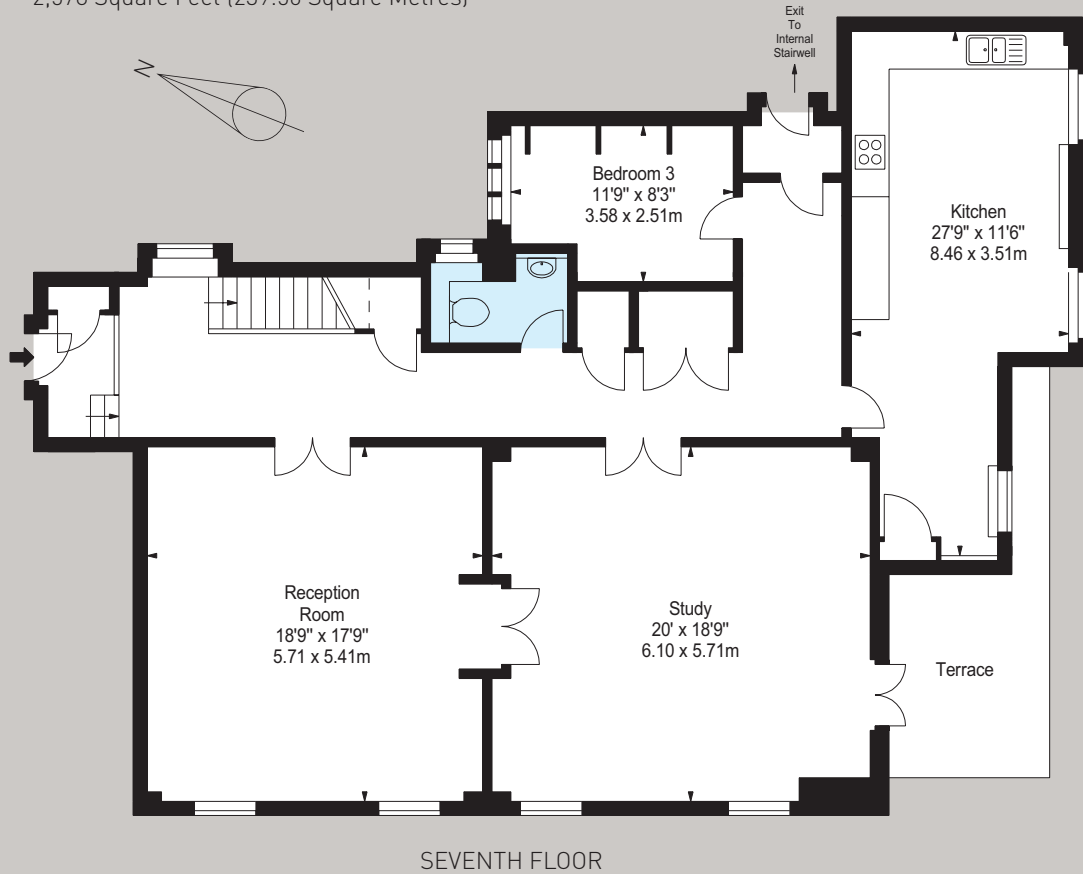


ACCOMMODATION

- * Entrance Hall * Kitchen * Reception Room * Study * Master Bedroom with En-Suite Bathroom and Dressing Area
- * 2 further Guest Bedrooms with En-Suite Bathrooms * Third Guest Bedroom * Terrace * Lift * Porter * 2,578 Sq Ft
- * EPC Band: D



APPROX. GROSS INTERNAL AREA
2,578 Square Feet (239.50 Square Metres)



TERMS

Leasehold: 103 years remaining
Service Charge: £17,765.76 per annum (£4,441.44 per quarter)
Ground Rent: £250 per annum
Price: £5,750,000

JOINT SOLE AGENTS



120a Mount Street, London W1K 3NN
T: 020 7499 1012
E: mayfair@knightfrank.com
knightfrank.co.uk



102 Mount Street, London W1K 2TH
T: 020 7529 5566
E: sales@wetherell.co.uk
wetherell.co.uk

Wetherell and Knight Frank have no authority to make or give any representations or warranties in relation to the property. These particulars do not form part of any offer or contract and must not be relied upon as statements or representations of fact. Any areas, measurements or distances are approximate. The text, photographs and plans are for guidance only and are not necessarily comprehensive. It should not be assumed that the property has all the necessary planning, building regulation or other consents and Wetherell and Knight Frank have not tested any services, equipment or facilities. Purchasers must satisfy themselves by inspection or otherwise. Energy Efficiency Rating: Band D. June 2016.