

HHM DEVELOPMENTS LTD

Incorporating **R J Morrall Ltd**
www.hhmdevelopment.co.uk
Tel. 01425 652438



SLOANE COURT

AMESBURY



SLOANE COURT

AMESBURY



49 High Street Salisbury Wiltshire SP1 2PD
01722 337575
www.myddeltonmajor.co.uk



A town centre development of
8 stylish houses, 5 apartments and
2 retail units, all finished to
a high standard

Myddelton & Major for themselves and for the vendors of this property whose agents they are give notice that:- i) the particulars are set out as a general outline only for the guidance of intended purchasers and do not constitute part of an offer or contract. ii) all descriptions, dimensions, reference to condition and necessary permissions for use and occupation, and other details are given without responsibility and any intending purchasers should not rely on them as statements or representations of fact, but must satisfy themselves by inspection or otherwise as to the correctness of each of them. iii) no person in the employment of Myddelton & Major or has any authority to make or give any representation or warranty whatever in relation to this property.

R.J.Morrall Ltd reserves the right to amend the specification at any time without prior notice.

Sloane Court 37-39 High Street Amesbury SP4 7ET



There has been a settlement at Amesbury for 1000's of years; Stonehenge is nearby, there was a Benedictine Abbey here in the 15th century and Queen Eleanor of Provence died and was buried here in 1291.

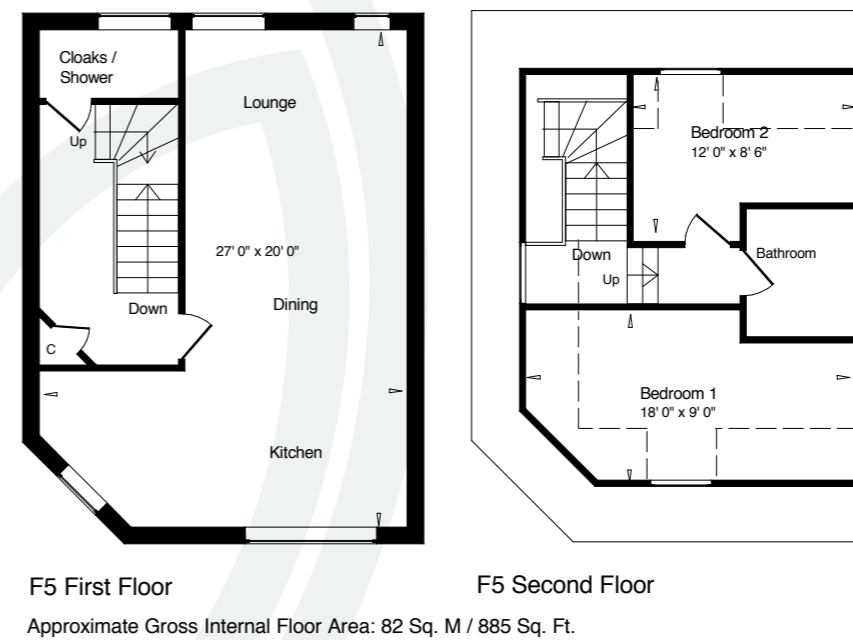
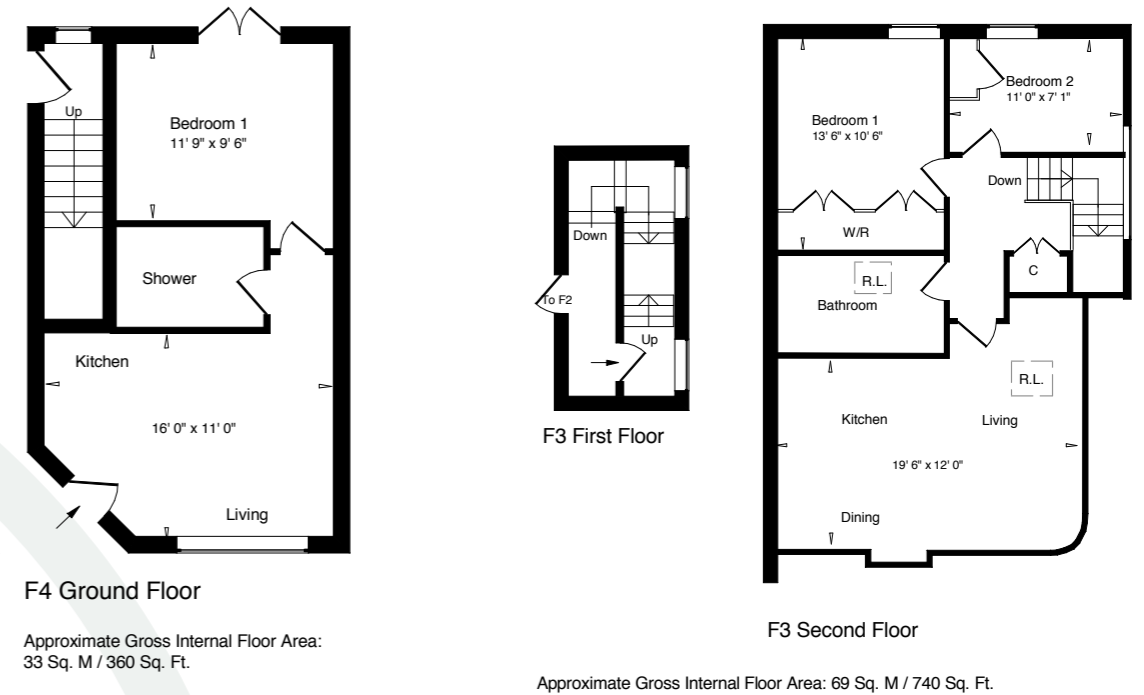
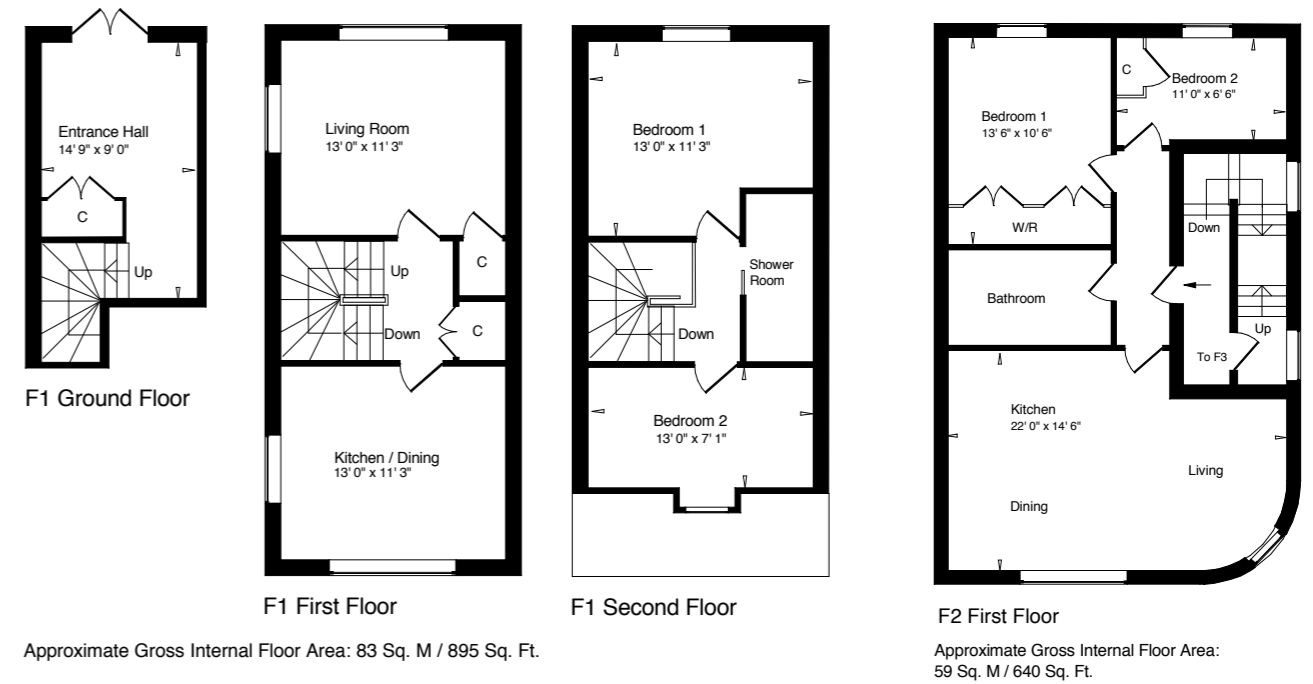
Today Amesbury is a modern, busy town with an excellent range of services, all of which are a level walk within the town itself. Facilities include a medical centre, dentist, library, post office, shops, restaurants and a supermarket.

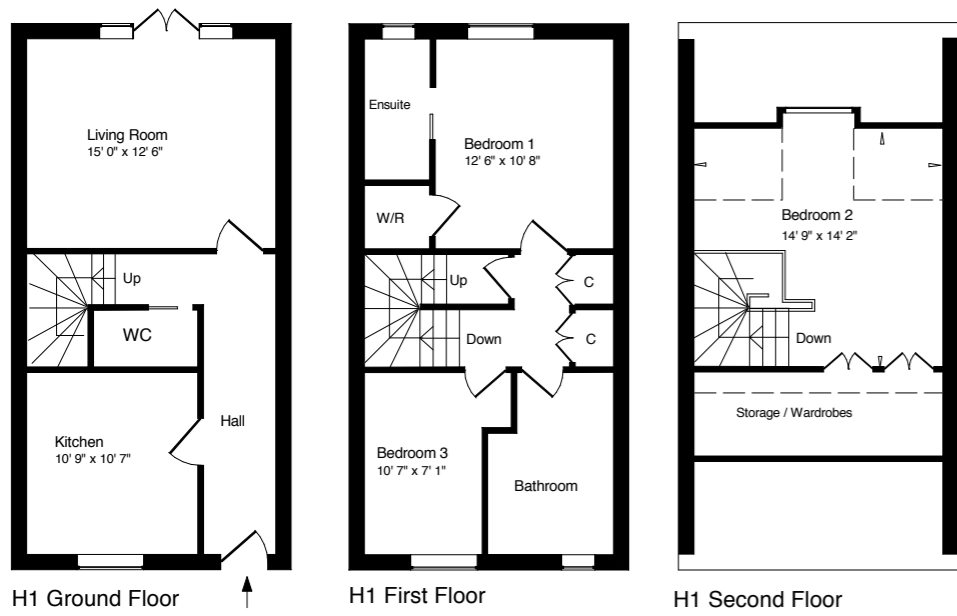
Transport connections from Amesbury are excellent with the A303 close by for travelling to London (75 miles) or to the West Country.

Sloane Court is a small development of just eight houses, five flats and two retail units. Every property is finished to a high standard with a quality of workmanship and attention to detail rarely found in other new built properties.

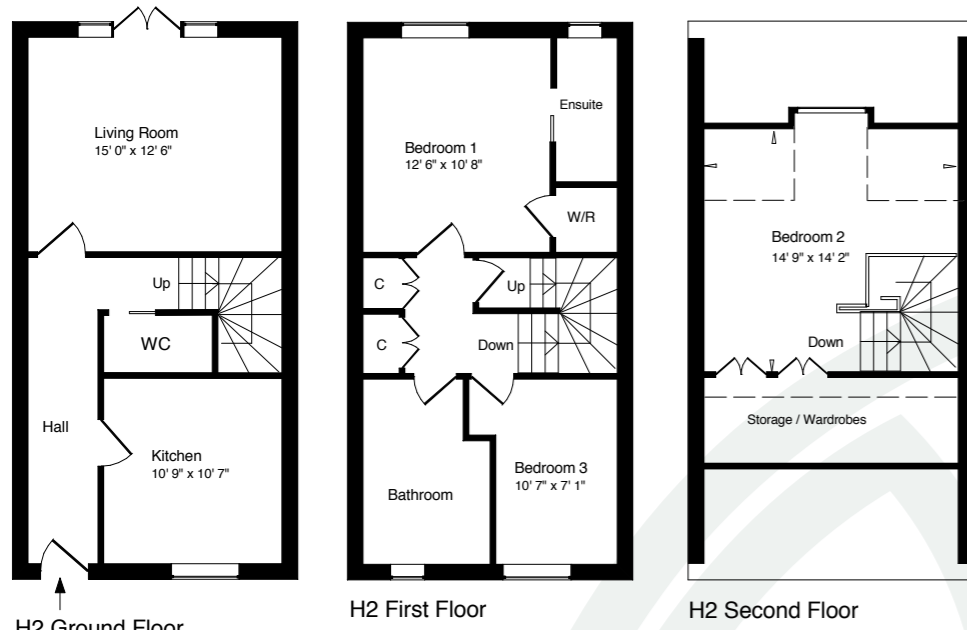



SLOANE COURT
 AMESBURY

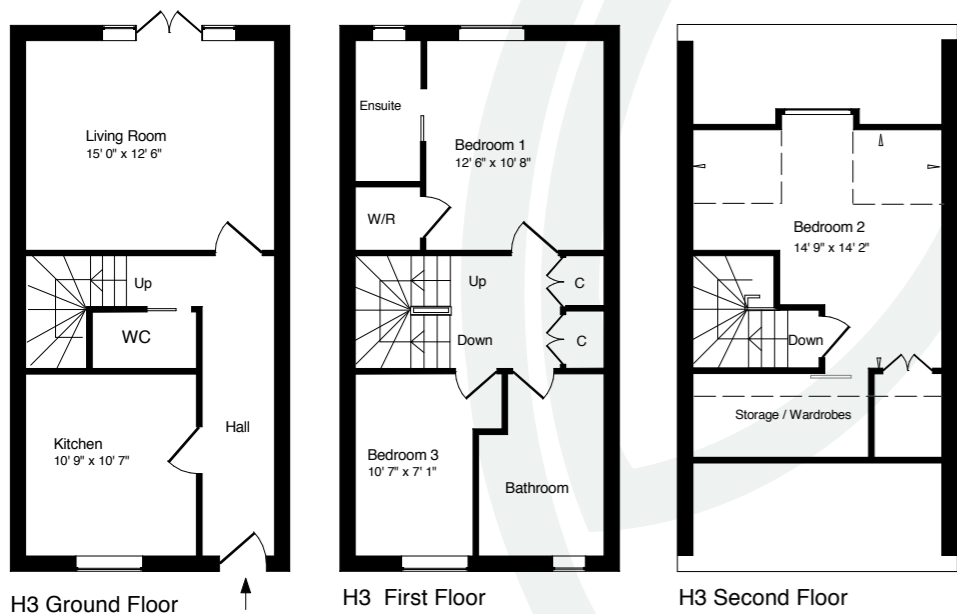




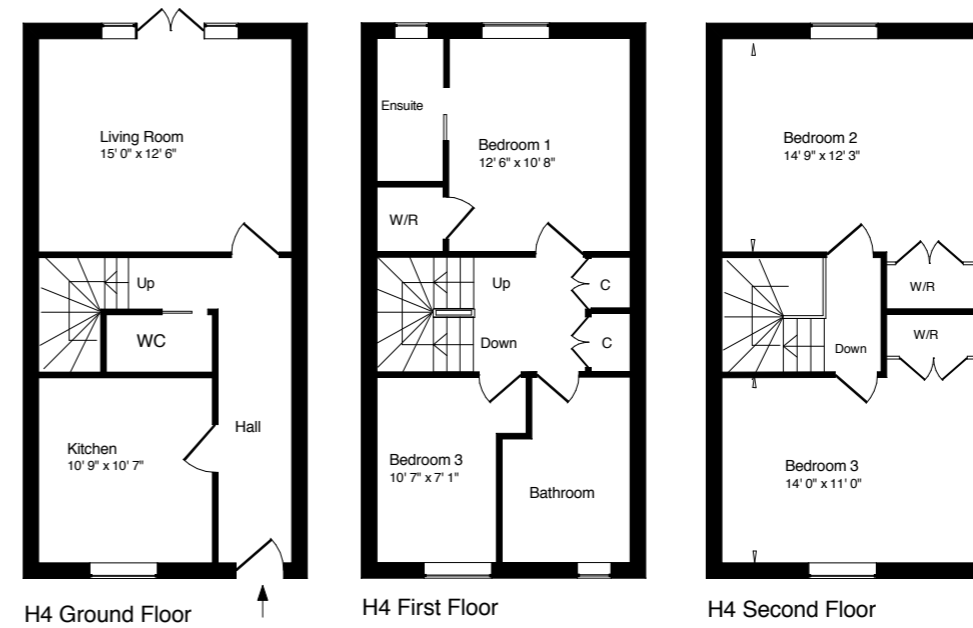
Approximate Gross Internal Floor Area: 107 Sq. M / 1,155 Sq. Ft.



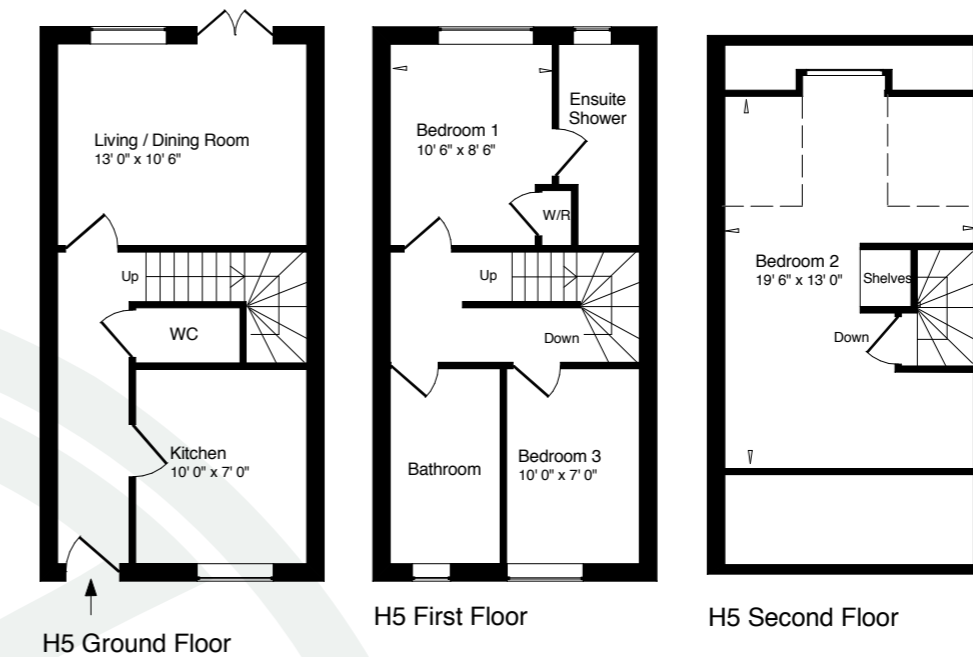
Approximate Gross Internal Floor Area: 107 Sq. M / 1,155 Sq. Ft.



Approximate Gross Internal Floor Area: 107 Sq. M / 1,155 Sq. Ft.



Approximate Gross Internal Floor Area: 128 Sq. M / 1,385 Sq. Ft.

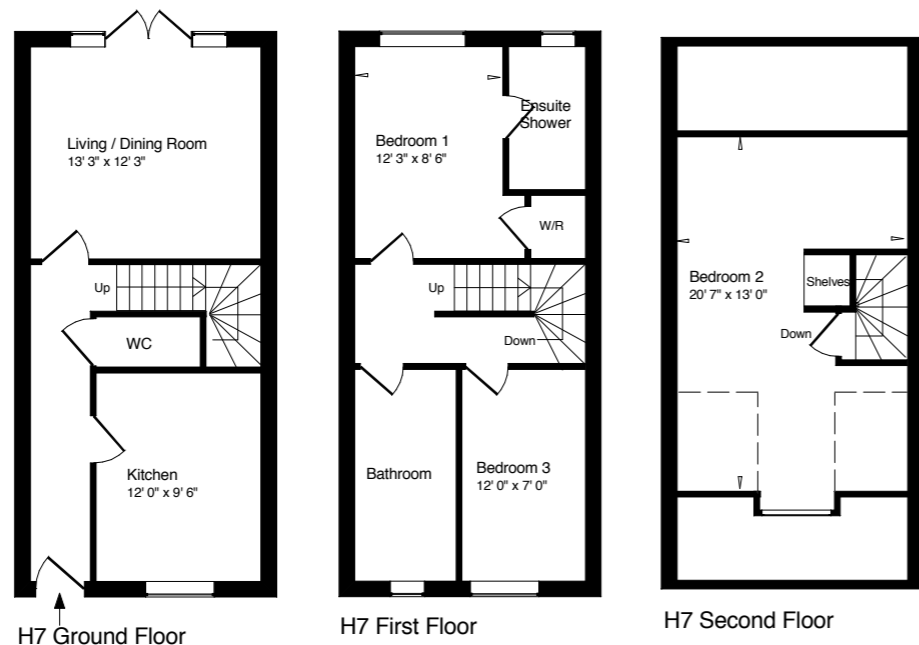


Approximate Gross Internal Floor Area: 84 Sq. M / 900 Sq. Ft.

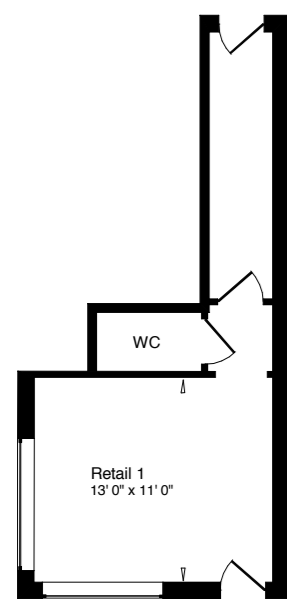


Approximate Gross Internal Floor Area: 99 Sq. M / 1,070 Sq. Ft.

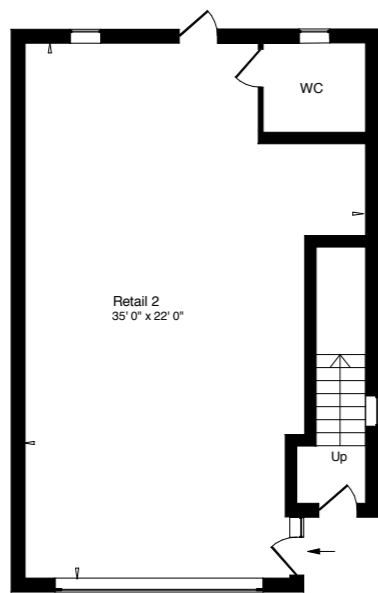




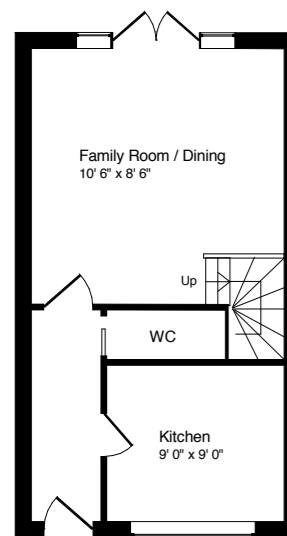
H7 Ground Floor
Approximate Gross Internal Floor Area: 99 Sq. M / 1,070 Sq. Ft.



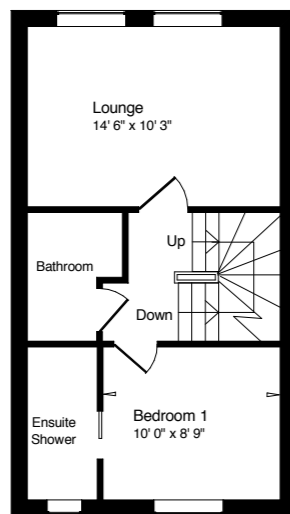
R1 Ground Floor
Approximate Gross Internal Floor Area
21 Sq. M / 230 Sq. Ft.



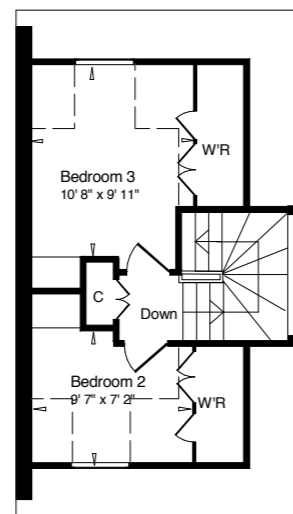
R2 Ground Floor
Approximate Gross Internal Floor Area:
63 Sq. M / 675 Sq. Ft.



H8 Ground Floor
Approximate Gross Internal Floor Area: 96 Sq. M / 1,030 Sq. Ft.



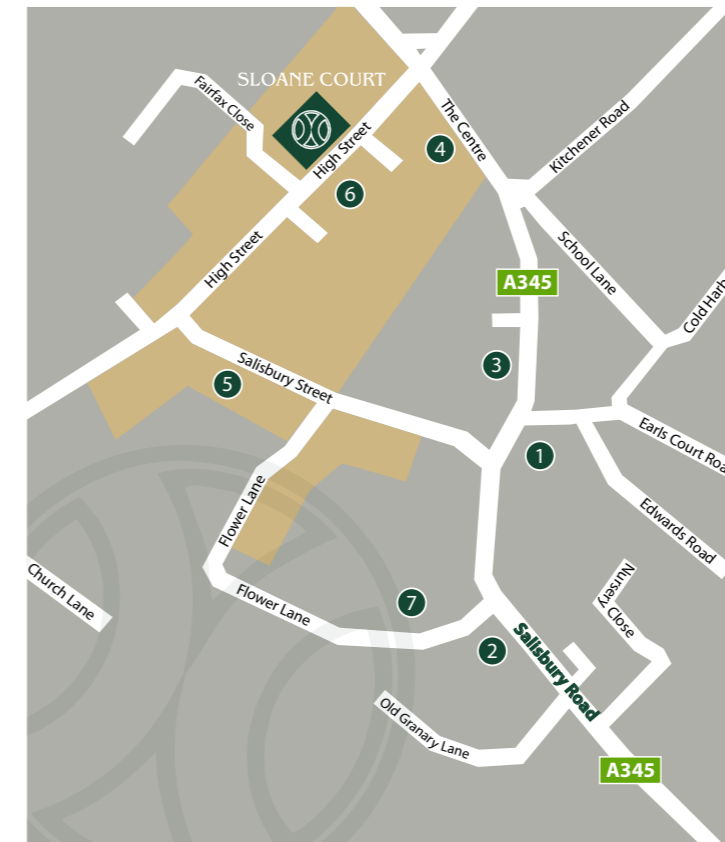
H8 First Floor



H8 Second Floor



Site Plan



General Specification

- 10 year C.R.L. Building Warranty with a 12 month Inspection by R.J.M Builders included
- All floor coverings included
- Integrated fridge/freezer and dishwasher
- Free standing washing machine
- Built in oven, hob and extractor fan
- Fully tiled shower enclosure
- Heated towel rail
- All windows double glazed
- Gas fired Bosch Worcester combination boiler
- All properties are predicted "B" rating E.P.C.
- Each property to have a least 1 parking space

Location & Amenities

- 1 Dentist
- 2 Emergency Services
- 3 Library
- 4 Medical Centre
- 5 Post Office
- 6 Shops
- 7 Supermarket

■ Shopping

