



St. John's Villas, N19 3EF

£300,000 Leasehold



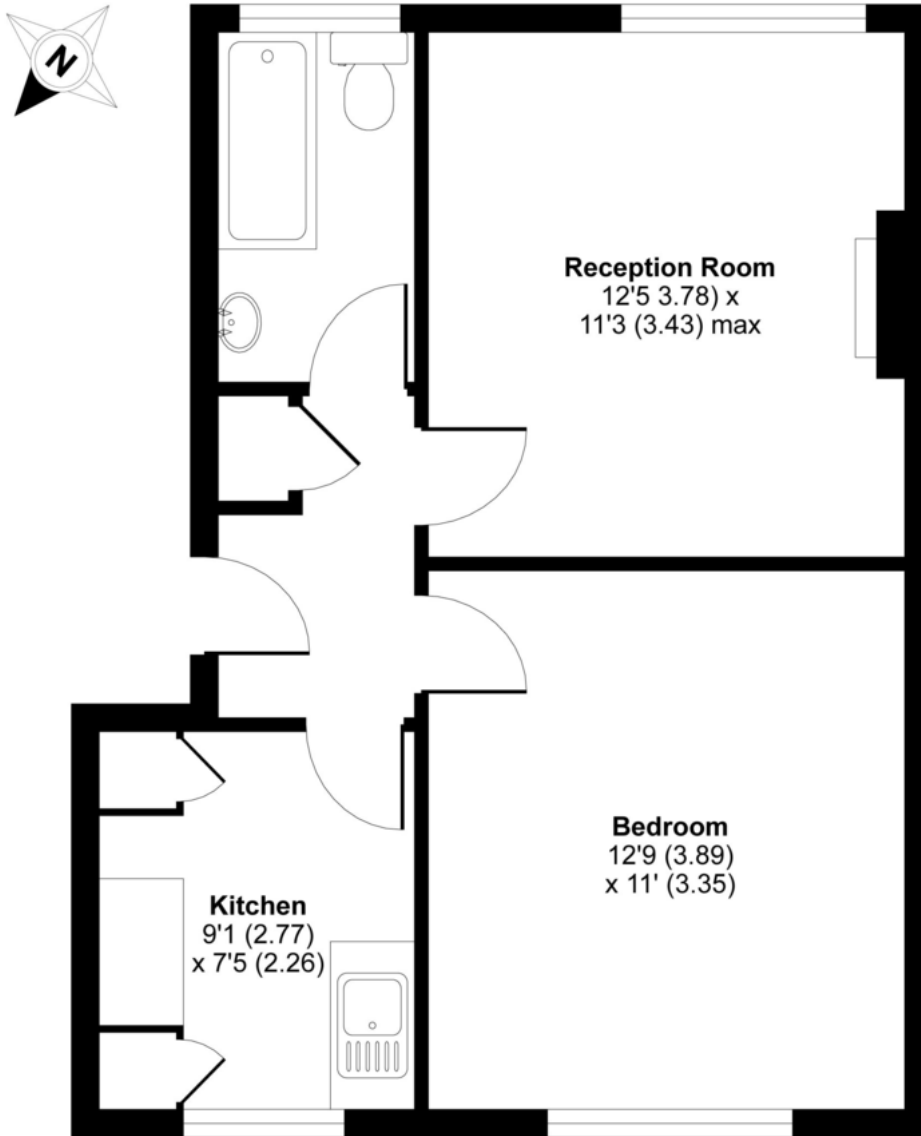
A one bedroom flat situated on the top floor of this private block of flats with access to a pretty communal garden. The flat is a spacious 444 SQFT - 41.2 SQM and requires complete refurbishment. St Johns Villas is a popular residential street located close to the local shopping and transport facilities found in Archway.

- leasehold - 103 years
- 444 SQFT - 41.2 SQM
- In need of refurbishment
- Top floor flat
- Communal garden
- Chain free
- 3 mins walk to Archway Tube
- Private Block



Ramsay Court, St. John's Villas, London, N19

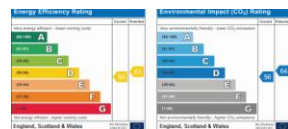
APPROX. GROSS INTERNAL FLOOR AREA 444 SQ FT 41.2 SQ METRES



SECOND FLOOR

Whilst every attempt has been made to ensure the accuracy of the floor plan contained here, measurements of doors, windows and rooms are approximate and no responsibility is taken for any error, omission or misstatement. These plans are for representation purposes only as defined by RICS Code of Measuring Practice and should be used as such by any prospective purchaser. Specifically no guarantee is given on the total square footage of the property if quoted on this plan. Any figure given is for initial guidance only and should not be relied on as a basis of valuation.

Copyright nichecom.co.uk 2016 Produced for David Andrew REF : 125331



Agent's Note:
Whilst Care has been exercised in the preparation of these particulars, statements about the property must not be relied upon as representations of statement or fact. Prospective applicants must make and rely upon their own enquiries and those of their professional representatives. The company accepts no liability for any error contained in these particulars.

Archway office

671 Holloway Road
London, N19 5SE

T (0)20 7619 3750
E archway@davidandrew.co.uk

Highbury office

90 Highbury Park
London, N5 2XE

T (0)20 7354 9111
E highbury@davidandrew.co.uk

Stroud Green office

167 Stroud Green Road
London, N4 3PZ

T (0)20 7281 2000
E stroudgreen@davidandrew.co.uk