

CENTRE POINT  
—  
THREE BEDROOMS

*Residences WC1*







**W**elcome to the revival of an icon: an architectural classic that embodies the spirit of swinging London and stands as a focal point at the creative and cultural heart of this ever-changing city.

When Centre Point arrived in London in 1966, its bold geometric design and delicate honeycomb façade captured the confidence, optimism and creative flair of the decade.

In a city famous for reinvention, the building is now set for a new life as an exclusive residence in an exceptional location. Set serenely above the bustle of the West End, these 82 apartments are contemporary classics, crafted by renowned British designers Conran & Partners.



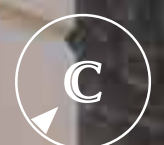






FROM THE HOUSES OF PARLIAMENT



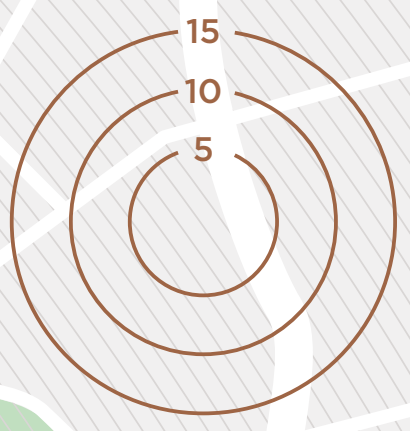


FROM CLARIDGE'S, MAYFAIR









- 1 DOMINION THEATRE
- 2 ST GILES-IN-THE-FIELDS
- 3 BRITISH MUSEUM
- 4 ROYAL OPERA HOUSE
- 5 HOUSES OF PARLIAMENT
- 6 NATIONAL GALLERY
- 7 LIBERTY
- 8 BT TOWER
- 9 SOMERSET HOUSE
- 10 LONDON EYE
- 11 SELFRIDGES

\*Source: walkit.com  
Based on a fast walking pace







  
CROSSRAIL  
Opening in 2019

HEATHROW  
 AIRPORT  
28 minutes

PADDINGTON  
5 minutes

BOND STREET  
2 minutes

TOTTENHAM  
COURT ROAD

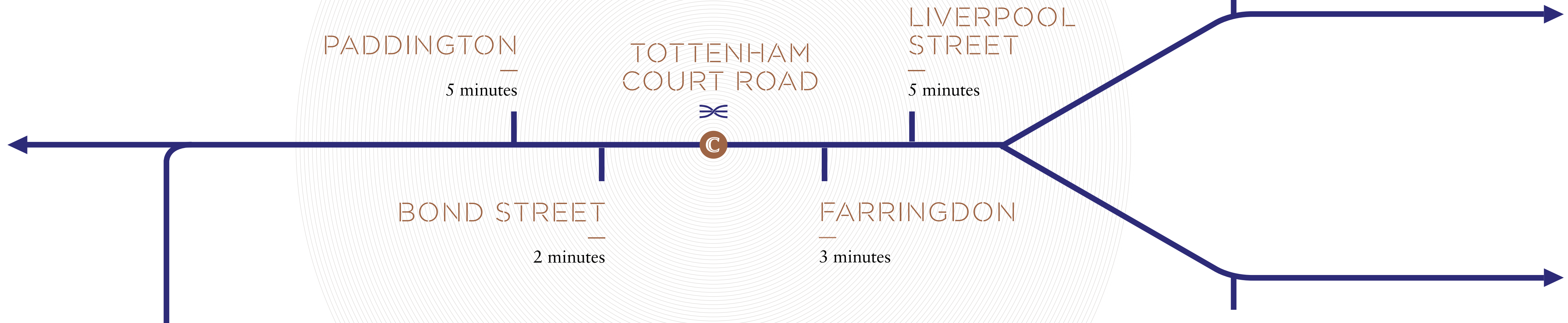
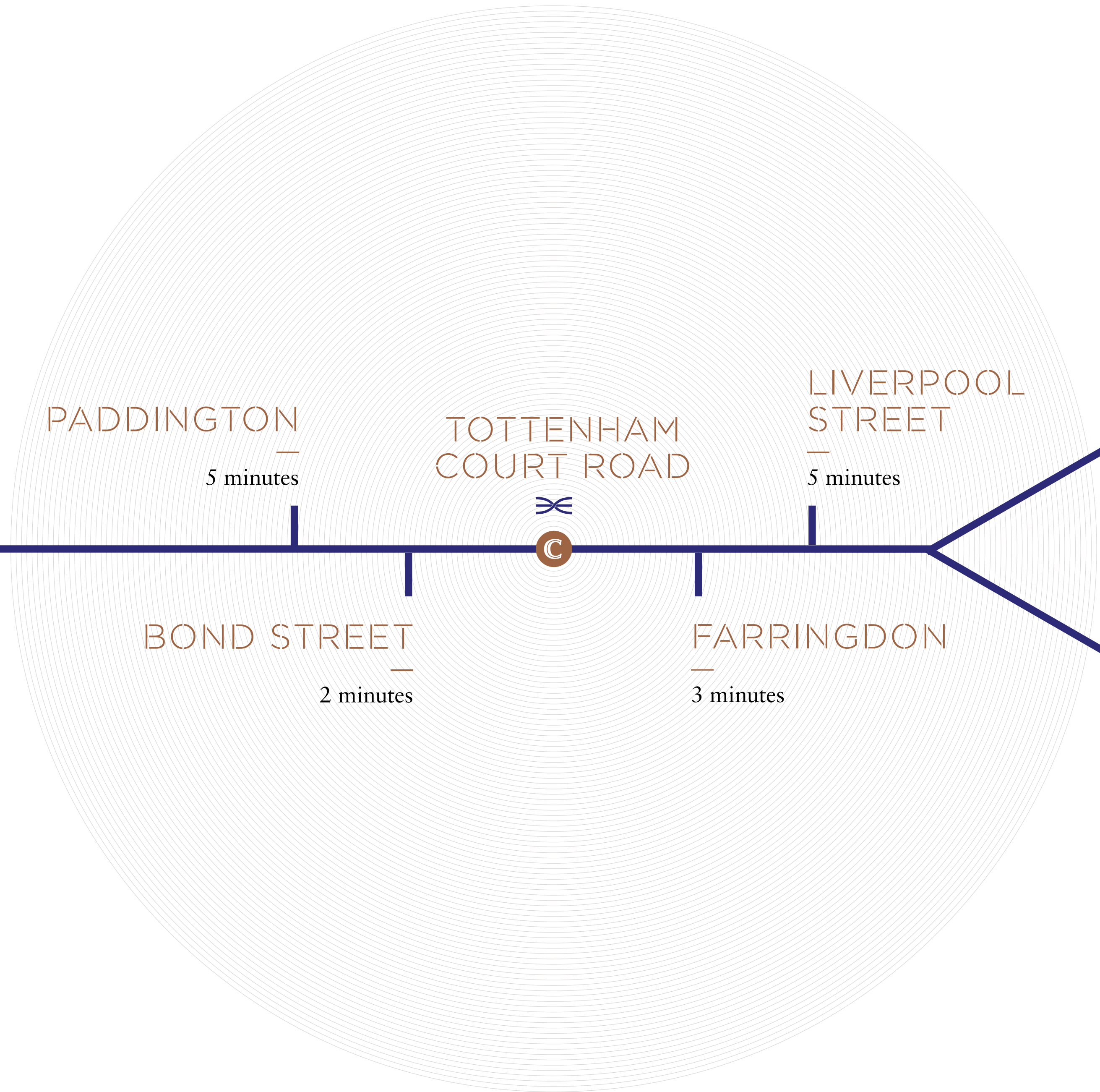


FARRINGTON  
3 minutes

LIVERPOOL  
STREET  
5 minutes

STRATFORD  
13 minutes

CANARY WHARF  
12 minutes





Centre Point has always been more than a building. The original West End skyscraper, it arrived as a powerful symbol of modernity. It has been described as a hypnotic honeycomb and London's first Pop Art building. In 1993, the Royal Fine Art Commission praised its *elegance worthy of a Wren steeple*.

The reinvention of Centre Point is true to this adventurous spirit, retaining the 1960s attitude but incorporating cutting-edge design and technology.

Outside the tower lies a new public square\*, lined with high-end retailers and restaurants. Inside, spectacular club and spa facilities are available exclusively to residents. Then come the apartments themselves: magical havens of calm and privacy, suspended above the heart of the West End — with unparalleled views across London by day and night.











THE ARRIVAL

*The original foundation pillars, with their distinctive angular design, signal you could be nowhere other than Centre Point.*







THE WELCOME

—  
*The spectacular double-height  
reception and original staircases  
lend a sense of drama to the arrival.*



THE HAVEN

*Centre Point is a residential building with the facilities and service ethos of a luxury hotel.*





THE CLUB





**T**he three-bedroom apartments extend to 153 sq m on levels 11—17. All are dual-aspect with spectacular views east and west across London.

A private entrance direct from the lift leads you into a hallway tiled with three-colour limestone in a bespoke Centre Point pattern. From here, you enter through glazed doors into the main living area, with continuous windows along one side and white washed oak flooring throughout.

Extra features include the marble counter tops in the kitchen and Nusilk carpet in the master bedroom. The master bathroom also introduces a combination of light and dark marble, with a confident, understated effect. All bedrooms are en suite with bespoke fittings throughout.

























EAST, THE CITY FROM CENTRE POINT AT 06:17





SOUTH WEST, THE PARKS FROM CENTRE POINT AT 15:03





WEST, OXFORD STREET FROM CENTRE POINT AT 18:24







BESPOKE IRONMONGERY DESIGNED  
BY CONRAN & PARTNERS IN  
COLLABORATION WITH SAMUEL HEATH





BARDIGLIO NUVOLATO STONE



BASALT



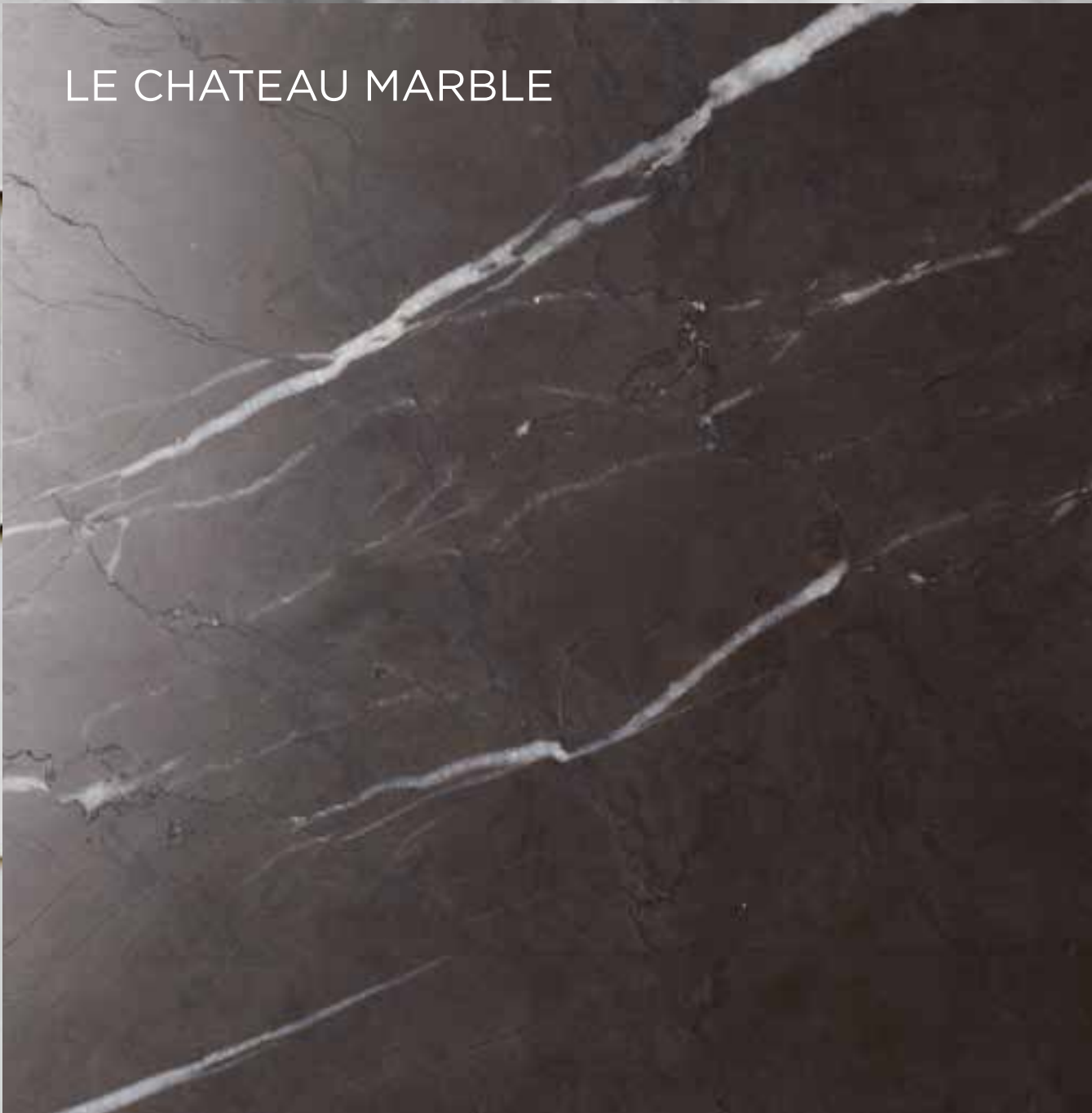
WHITE CARRARA MARBLE



WHITE MARBLE MOSAICS



LE CHATEAU MARBLE



BLEU DE SAVOIE MEDIUM LIMESTONE



BLEU DE SAVOIE DARK LIMESTONE



MOLEANOS BEIGE



WHITE RHINO MARBLE



BLEU DE SAVOIE LIGHT LIMESTONE





WHITE WASHED OAK (OILED)



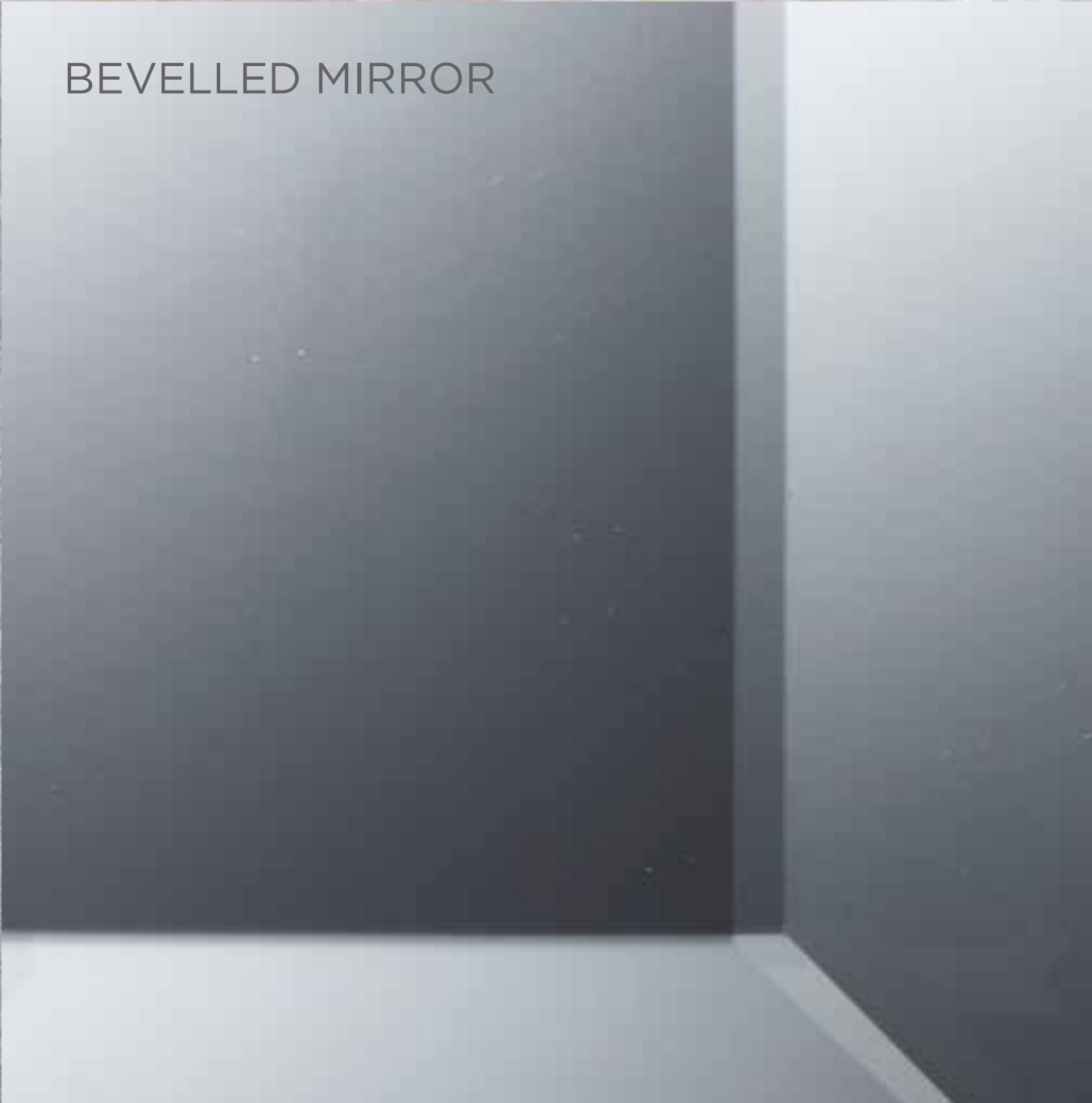
BLACK STAINED TIMBER



POLISHED NICKEL



BEVELLED MIRROR



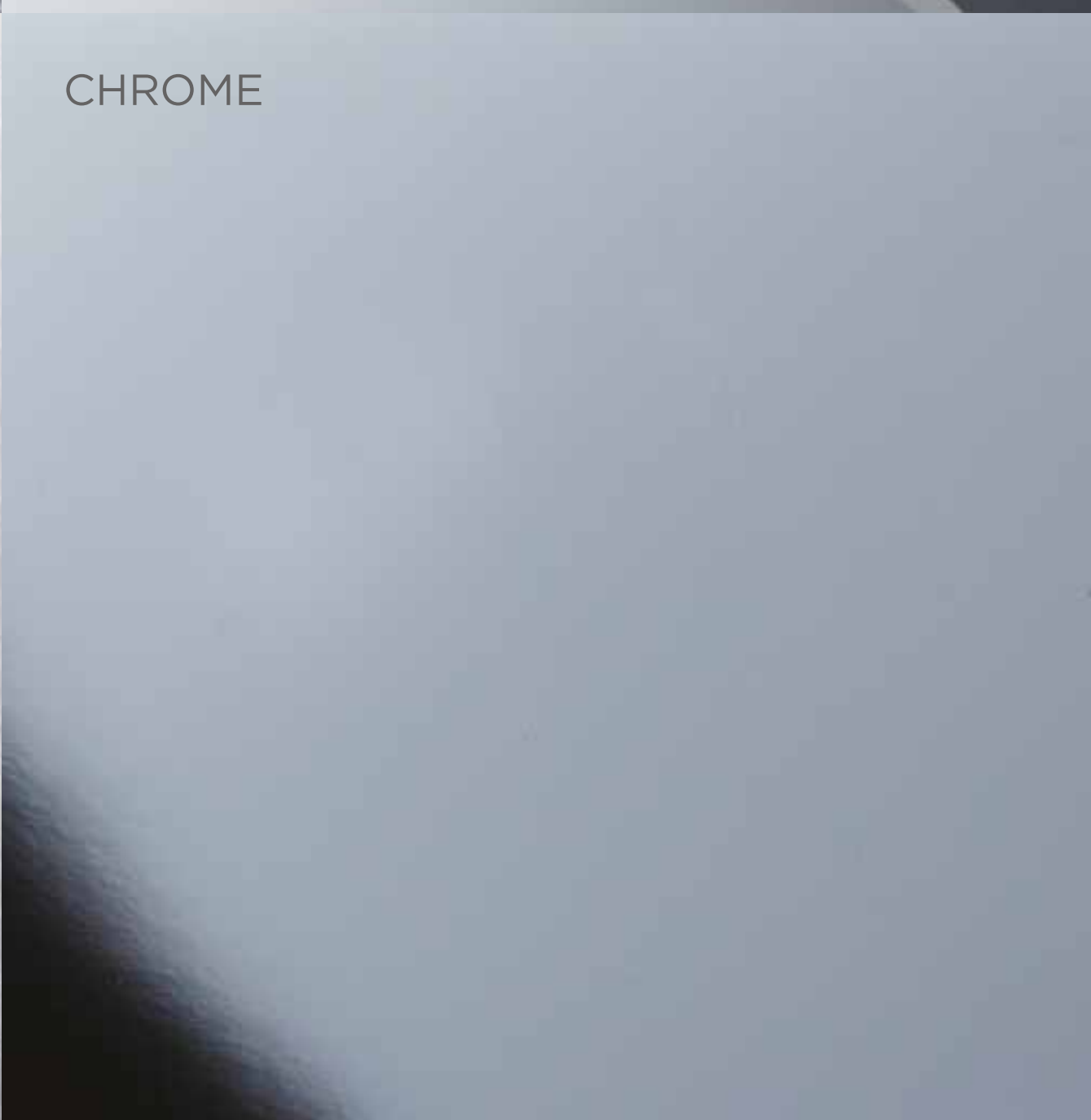
GREY DELUXE NUSILK CARPET



BRUSHED STAINLESS STEEL



CHROME





# THREE BEDROOM

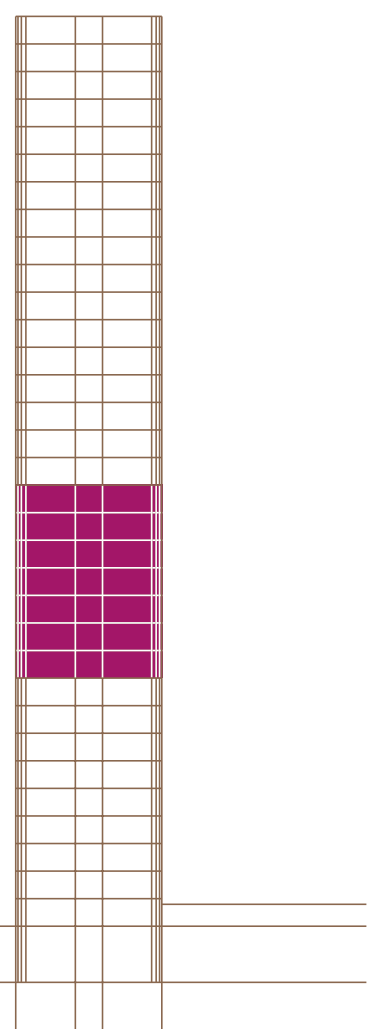
SOUTH FACING



APARTMENT NUMBERS

18 to 24

FLOORS 11 TO 17



## ENTRANCE

Three tone Bleu de Savoie bespoke patterned limestone flooring  
Dark stained oak panelled walls and wardrobes  
Bevelled mirrors

## LIVING AREA

Wide white washed oak board flooring  
White painted walls

## BEDROOMS

Wide white washed oak board flooring  
Grey deluxe Nusilk carpet in the master bedroom

## KITCHEN

Boffi with Gaggenau appliances  
Marble counter tops and splash backs  
White matt lacquer bespoke cabinetry  
Stainless steel counter tops and splash back to utility area  
Marble tiled flooring

## MASTER BATHROOM

Marble walls, floor and bath surround  
Bespoke vanity unit with white lacquer drawer front and marble top  
Bespoke recessed lit mirror with demister

## SECOND BATHROOM

Limestone tiled wall and counter top  
White marble mosaic feature wall  
Bespoke vanity unit with drawer  
Bespoke recessed lit mirror with demister  
Moleanos limestone flooring

## GUEST BATHROOM

Basalt tiled walls  
Bespoke vanity unit with white lacquer front and marble top  
Bespoke recessed lit mirror with demister  
Marble tiled flooring

## SANITARY WARE

Dornbracht Lulu range in chrome

## IRONMONGERY

Bespoke ironmongery designed by Conran & Partners in collaboration with Samuel Heath

## TOTAL AREA

153 sq m  
1647 sq ft

## KITCHEN & LIVING AREA < >

7.5 x 8.5m  
25 x 28ft

## MASTER BEDROOM < >

5 x 3.6m  
16 x 12ft

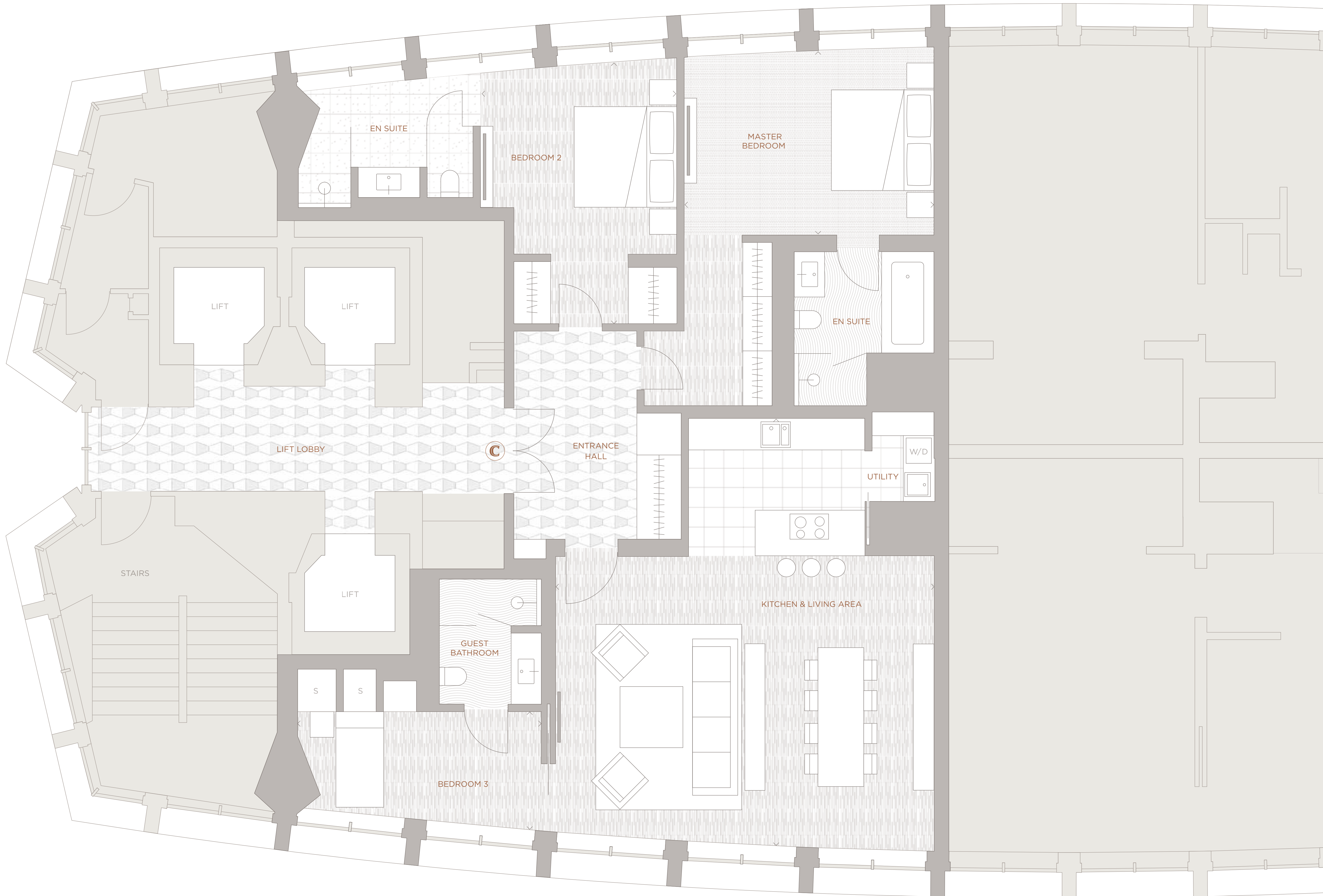
## BEDROOM 2 < >

3.9 x 5.2m  
13 x 17ft

## BEDROOM 3 < >

4.8 x 2.4m  
16 x 8ft





Plans are for indicative purposes only

S - SERVICES  
W/D - WASHER DRYER



# THE SPECIFICATION

---

## THE BUILDING

---

Grade II listed  
82 private apartments (16 x one bedroom,  
30 x two bedroom, 7 x three bedroom,  
26 x Vantage Collection and 3 x penthouses)

## RECEPTION

---

Original staircases, exposed angular pillars  
and terrazzo patterned flooring  
Commissioned art  
Sitting area to welcome guests  
24-hour concierge  
Six passenger lift cars serving the apartments  
Post rooms

## SECURITY

---

24-hour on-site security team  
Monitored CCTV  
Fob access control to the building  
Intruder alarm in each apartment

## SPA & WELLNESS

---

30-metre swimming pool  
Steam room and sauna  
Gym & studio  
Changing facilities  
Treatment rooms

## CLUB LOUNGE

---

Business and meeting facilities  
Lounge area & event space  
Screening room

## TECHNOLOGY

---

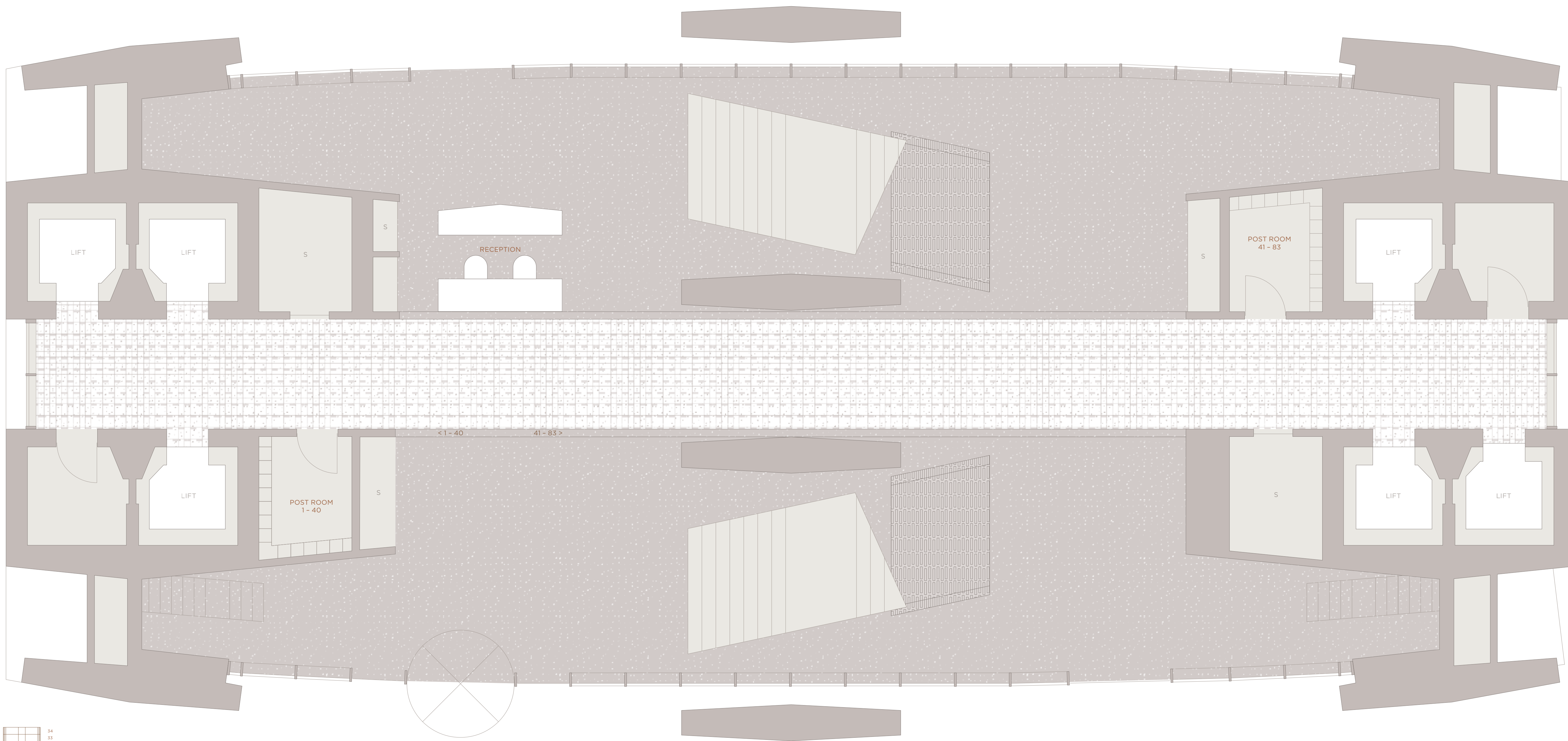
Crestron-based lighting, blind, audio-visual  
and temperature control system, incorporating  
security control and concierge connectivity  
via touch panels and bespoke switches.  
Fully wired apartments for future audio-visual  
connectivity, including amplifiers,  
touch panel interface and in-built speakers.

## LEASE & GUARANTEES

---

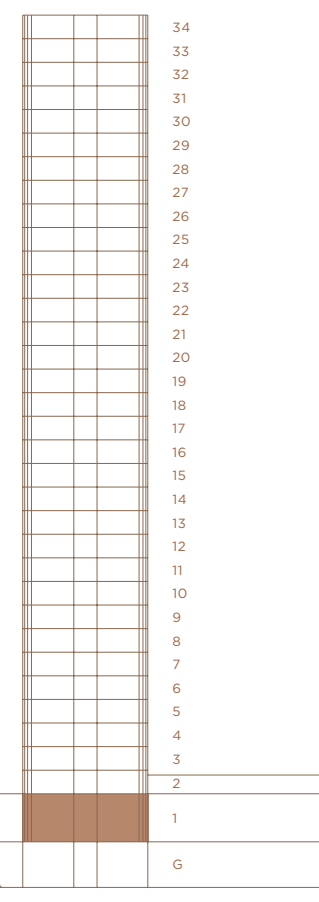
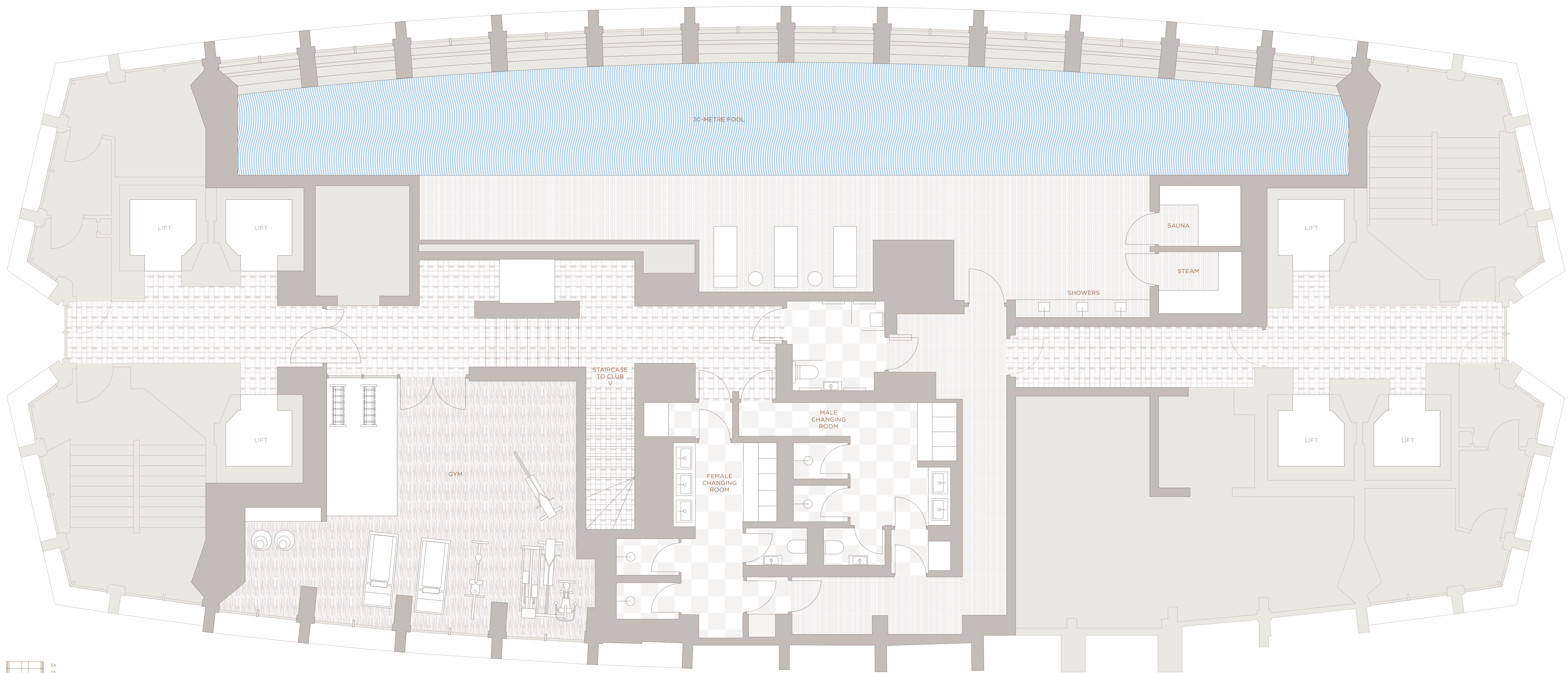
10-year building guarantee  
999-year lease



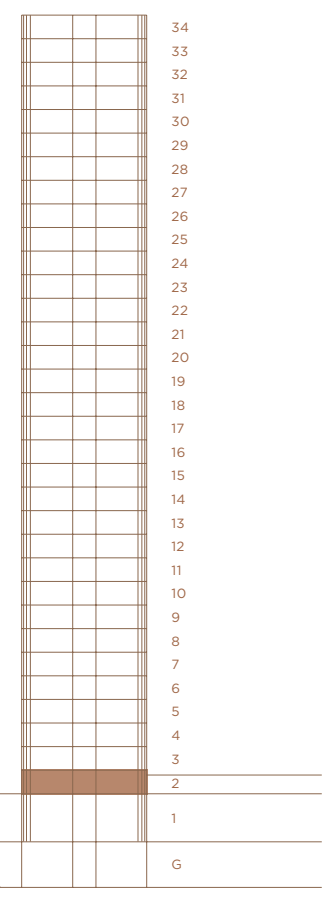
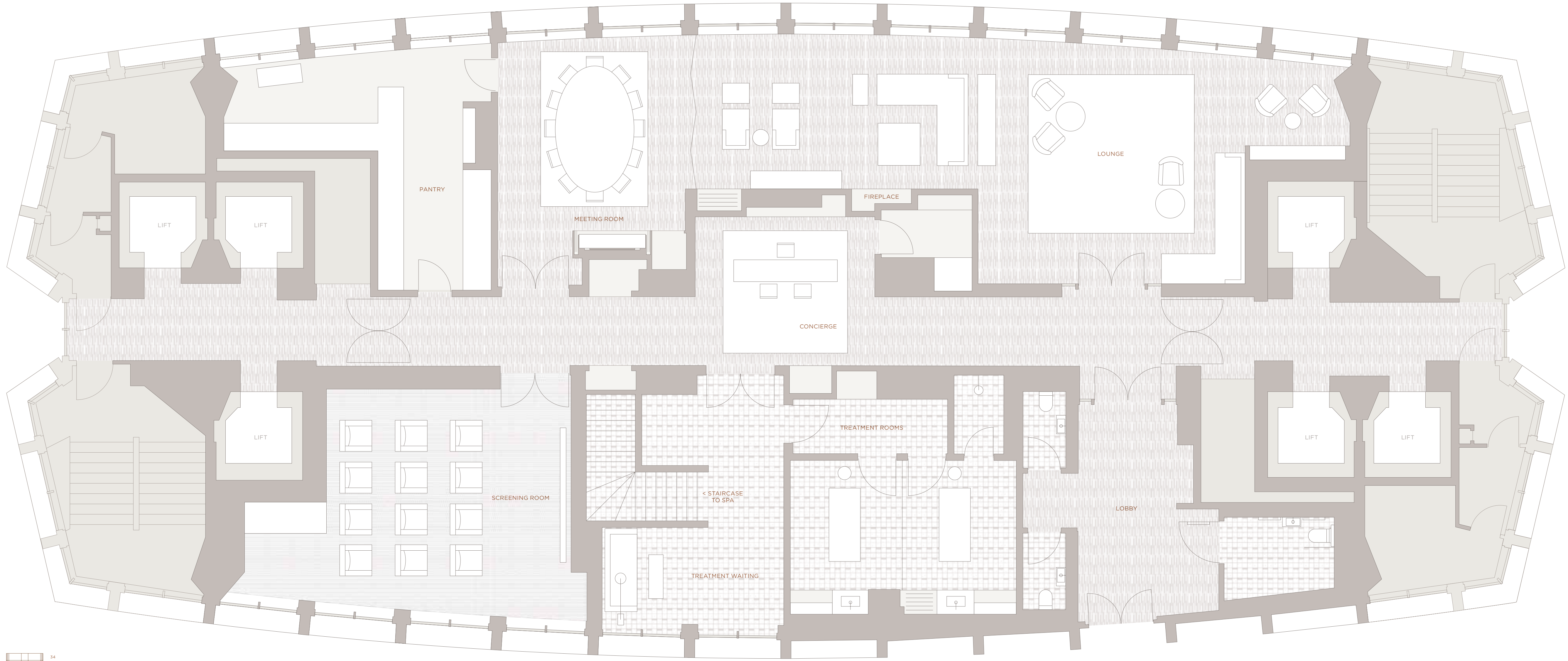


34	
33	
32	
31	
30	
29	
28	
27	
26	
25	
24	
23	
22	
21	
20	
19	
18	
17	
16	
15	
14	
13	
12	
11	
10	
9	
8	
7	
6	
5	
4	
3	
2	
1	
0	











## THE TEAM

---

### ALMACANTAR

---

Almacantar brings together a team of people who have led some of the biggest and most innovative developments in London in the last two decades.

The approach is to inject new life in buildings through a deep appreciation of their context and heritage, a commitment to extraordinary standards of creativity and craftsmanship, and the application of pure property skills and thinking.

Since launching in 2010, Almacantar has acquired several prime assets with untapped potential in the heart of London. The company is backed by a small number of high-value investors.

---

*We have been fortunate to be involved in some of London's landmark development schemes, but Centre Point is different. More than a development site, it is a national treasure.*

Mike Hussey, Chief Executive, Almacantar

### CONRAN & PARTNERS

---

Conran & Partners is part of the Conran Group of companies, headed by legendary British designer and innovator Sir Terence Conran. The practice has spent over three decades improving the built environment through inspired masterplans, architecture and interior design. With experience in a variety of sectors, Conran & Partners is known for its intelligent and imaginative approach to design, based on a close understanding of the commercial and cultural requirements of each brief.

---

*Centre Point stands, both literally and figuratively, at the cultural heart of London. It is one of the city's great landmarks, and we are thrilled to be bringing it into the 21st century.*

Tim Bowder-Ridger, Managing Director  
Conran & Partners

### RICK MATHER ARCHITECTS

---

Established in 1973, Rick Mather Architects has a reputation for delivering innovative projects encompassing architecture, masterplanning and urban design. Award-winning projects include the Southbank Centre Masterplan, the renovation and extension of the Dulwich Picture Gallery, the Wallace Collection, the National Maritime Museum in London, The Times Newspaper headquarters in London's Docklands, private residences in Hampstead and the Zen restaurants in London, Montreal and Hong Kong.

---

*Centre Point stands firmly in the tradition of Le Corbusier's modernism of the 1930s, which is also evident in the work of Oscar Niemeyer and Gio Ponti's Pirelli building in Milan. They share the same fascination with interlocking forms, and the relationship between vertical and horizontal. It is a building of historic importance, but its spirit is always forward-looking.*

Gavin Miller, Partner, Rick Mather Architects



## CONTACT

---

## KNIGHT FRANK

---

*Charles Davis*  
charles.davis@knightfrank.com  
+44(0)20 7861 1740



*Views*

All views by Paul Grundy except  
west dusk view by Hufton+Crow

---

*The Apartments*

Artwork courtesy of:  
Rob and Nick Carter (page 16)  
Julian Rapp (page 21)

We gratefully acknowledge the granting of  
permission to use these images. Every reasonable  
attempt has been made to identify and contact  
copyright holders. Any errors or omissions  
are inadvertent.

All Computer Generated Images are for illustrative purposes only

IMPORTANT NOTICE

- 1 The particulars contained in this pdf are for guidance only. The accuracy of any information in this pdf is not guaranteed and any prospective purchasers must not rely on such information as statements of fact or representations and must satisfy themselves as to its accuracy. This pdf has been prepared in good faith and whilst Almacantar and any joint agents endeavour to ensure that the content is correct at the time of publication it does not offer any warranty or guarantee of any kind in relation to the accuracy of the content. The details of the properties included in this pdf are not intended to be complete descriptions of the properties and you should conduct your own thorough investigation into the properties before committing to purchase. The content of this pdf does not and may not form part of any contract between Almacantar and any prospective purchaser of the properties referred to in this pdf and may not be treated as a statement or representation of fact. Almacantar and any joint agents shall not be liable to the extent permissible by law from the use by you of the information provided in this pdf.
- 2 Any areas, measurements or distances given in this pdf are approximate only.
- 3 This pdf has been prepared from preliminary plans and specifications before the completion of the properties. They may change during construction and final finishes could vary.
- 4 Annual service charges will be payable.
- 5 The new public square which is referred to / shown on pages 11, 12 and 14 is subject to London Borough of Camden's delivery programme, therefore, may not be completed in the manner shown. If this square is not completed in the manner shown the paved entrance to Centre Point shown in the image on page 14 may not extend as far as is depicted.
- 6 Please note that Crossrail is planned to launch in 2019.



