



Makerfield, 5 Merton Terrace, Oldbury Road, Bridgnorth, WV16 5DY

Makerfield, 5 Merton Terrace, Oldbury Road, Bridgnorth, WV16 5DY

A delightful Victorian three bedroom townhouse in this highly sought after location of Oldbury village on the outskirts of Bridgnorth with private garden and parking, yet within walking distance of the town and amenities.

Bridgnorth - 0.9 miles, Telford - 13.1 miles, Wolverhampton - 14.3 miles,
Shrewsbury - 21.3 miles, Birmingham - 27.6 miles (All distances are approximate)

LOCATION

Oldbury village is situated on the outskirts of the historic market town of Bridgnorth where there is a good selection of local amenities to include shops, cafe's, restaurants, pubs and entertainment. A nearby footpath also gives pedestrian access into the High Town. Additionally there is Primary and Secondary schooling, healthcare/Hospital, post offices and weekend markets. Oldbury borders lovely Shropshire countryside and is an ideal choice for walkers, cyclists and equestrian pursuits.

ACCOMMODATION

Makerfield stands behind a small paved frontage off the road and the immaculate and tastefully presented accommodation is laid out over three storeys. The property is entered through a period stained glass front door into the entrance hallway with solid oak flooring, skirting boards, coved ceilings with a staircase off and doors to the reception room, WC and kitchen. The lounge enjoys an abundance of natural light from the feature bay window with plantation shutters, whilst also benefiting with oak flooring and a feature cast iron open fireplace. A cloakroom is accessed from the hallway prior to entering the kitchen. The kitchen/dining room boasts a number of features that include a bay window, cast iron gas log burner with wooden surround, oak flooring and French doors. It includes bespoke solid oak base and wall mounted units with a white quartz worktop, integrated dishwasher, Rangemaster cooker and Villery & Boch sink. The French doors open on to the rear patio, ideal for eating Al Fresco style.

To the first floor Makerfield enjoys two double bedrooms, the master to the front with floor to ceiling height fitted wardrobes and two windows to the front with plantation shutters. The deluxe family bathroom includes a freestanding limestone Ashton & Bentley bath, hand wash basin, WC, shower cubicle with tiled surround and chrome heated towel rail. The bedroom to the rear enjoys an en-suite with WC and hand wash basin and could be used as a dressing room.

To the top floor the property boasts a double bedroom with a vaulted ceiling and exposed timber beams, velux windows and storage space in the eaves. A further room is located to the rear that is currently a storage room that houses the boiler, however could easily make a study or dressing room.

OUTSIDE

Makerfield has private parking for two cars to the rear accessed via the private shared driveway off Old Mill Lane, as well as street parking to the front. Outside to the front there is an enclosed paved area leading to the front door. To the rear the property has a pretty and private garden mainly laid to lawn with a pathway, enjoying a sunny aspect. At the end of the garden is a timber shed for storing garden equipment, with a gate giving access to the private parking area.

SERVICES:

We are advised by our client that all mains services are connected. Verification should be obtained from your surveyor.

TENURE:

We are advised by our client that the property is FREEHOLD. Verification should be obtained by your Solicitors.

COUNCIL TAX:

Shropshire Council. Tax Band: D.

FIXTURES AND FITTINGS:

By separate negotiation.

VIEWING ARRANGEMENTS:

Viewing strictly by appointment only. Please contact our BRIDGNORTH OFFICE.

DIRECTIONS:

From our Bridgnorth office continue to the High Street and turn left, proceed through the North Gate to the roundabout. Turn left passing the hospital and continue to the next island turning right. At the next mini roundabout turn left and follow the road down onto Hollybush Road and continue past the George Public House and Severn Valley Railway. Take the next right turn onto the B4363 towards Cleobury Mortimer. Merton Terrace is positioned a short way along on your left hand side identified by our for sale board.

13/15 High Street
Tettenhall
Wolverhampton
WV6 8QS

01902 747744
tettenhall@berrimaneaton.co.uk

22/23 Whitburn Street
Bridgnorth
Shropshire
WV16 4QN

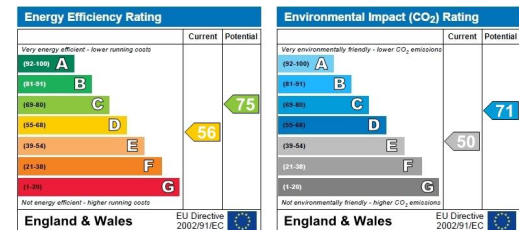
01746 766499
bridgnorth@berrimaneaton.co.uk

High Street
Wombourne
Wolverhampton
WV5 9DP

01902 326366
wombourne@berrimaneaton.co.uk

www.berrimaneaton.co.uk

Offers around
£285,000



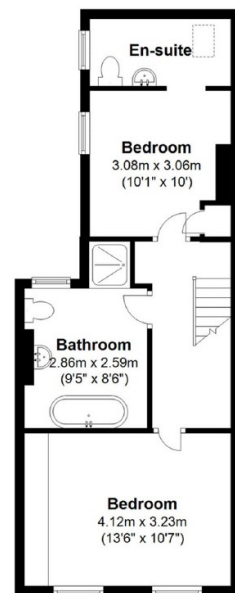
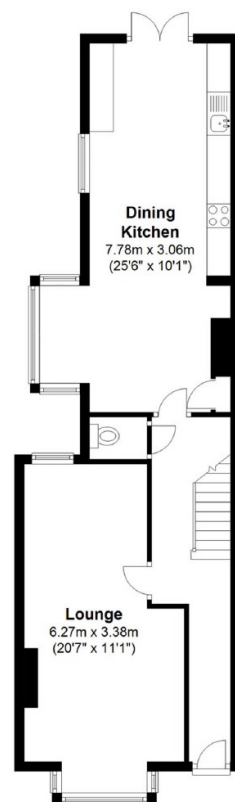
IMPORTANT NOTICE: Every care has been taken with the preparation of these Particulars but they are for general guidance only and complete accuracy cannot be guaranteed. Areas, measurements and distances are approximate and the text, photographs and plans are for guidance only. If there is any point which is of particular importance please contact us to discuss the matter and seek professional verification prior to exchange of contracts.



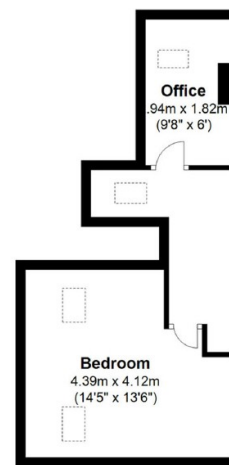
**5 Merton Terrace
Oldbury
Bridgnorth
WV16 5DY**

**Approx Overall Floor Area
128.8sq.m 1386.1sq.ft.
(excluding garages/stores)**

**FOR GENERAL GUIDANCE ONLY
NOT TO SCALE**



First Floor



Second Floor

Ground Floor



