



Shear Brow, Blackburn, BB1 8EA



Crown Estates and Letting Agents are delighted to present this 2 bedroomed terraced house to the rental market, situated in the popular area of Shear Brow, Blackburn.

£450 PCM

Crown Estates and Letting Agents are delighted to present this 2 bedroomed terraced house to the rental market, situated in the popular area of Shear Brow, Blackburn.

The accommodation briefly comprises of a lounge, a fitted kitchen, two bedrooms and a bathroom. Outside there is a garden to the rear. The property is located within walking distance of Corporation Park, St Mary's College and Blackburn town centre.

Ground Floor:

Lounge

The lounge comprises of: wood panelled door, 2 uPVC double glazed windows, ceiling light point, open fire with feature surround, ceiling with exposed beams, double panel radiator, TV and telephone point, smoke alarm, wood laminate flooring, under stair storage and stairs to first floor.

Kitchen/Diner

The kitchen/diner comprises of: 2 uPVC double glazed windows, 4 spotlights, character beams, ceiling light point, fully fitted wall and base units, 5 ring gas hob with electric oven, composite sink with mixer tap, double panel radiator, plumbing for a washing machine, tile flooring, bifold doors to rear porch and external door leading to the garden.

First Floor:

Landing

The landing consists of: wooden single glazed window, ceiling light point, double panel radiator, smoke alarm and wood laminate flooring.

Bedroom One

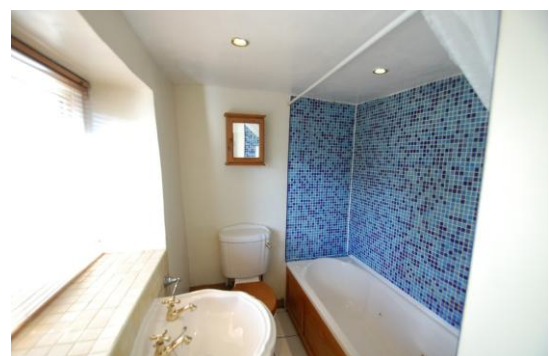
Bedroom one comprises of: uPVC double glazed window, ceiling light point, double panel radiator, wood laminate flooring and built in wardrobe.

Bedroom Two

Bedroom two comprises of: uPVC double glazed window, ceiling light point, double panel radiator and carpet flooring.

Family Bathroom

The bathroom is part tiled and consists of: wood framed double glazed window, 3 spotlights, hand wash basin, WC, bath with overhead electric shower, double panel radiator and tile flooring.



Outside

The property is garden fronted, and to the rear is a garden with mature shrubbery.

