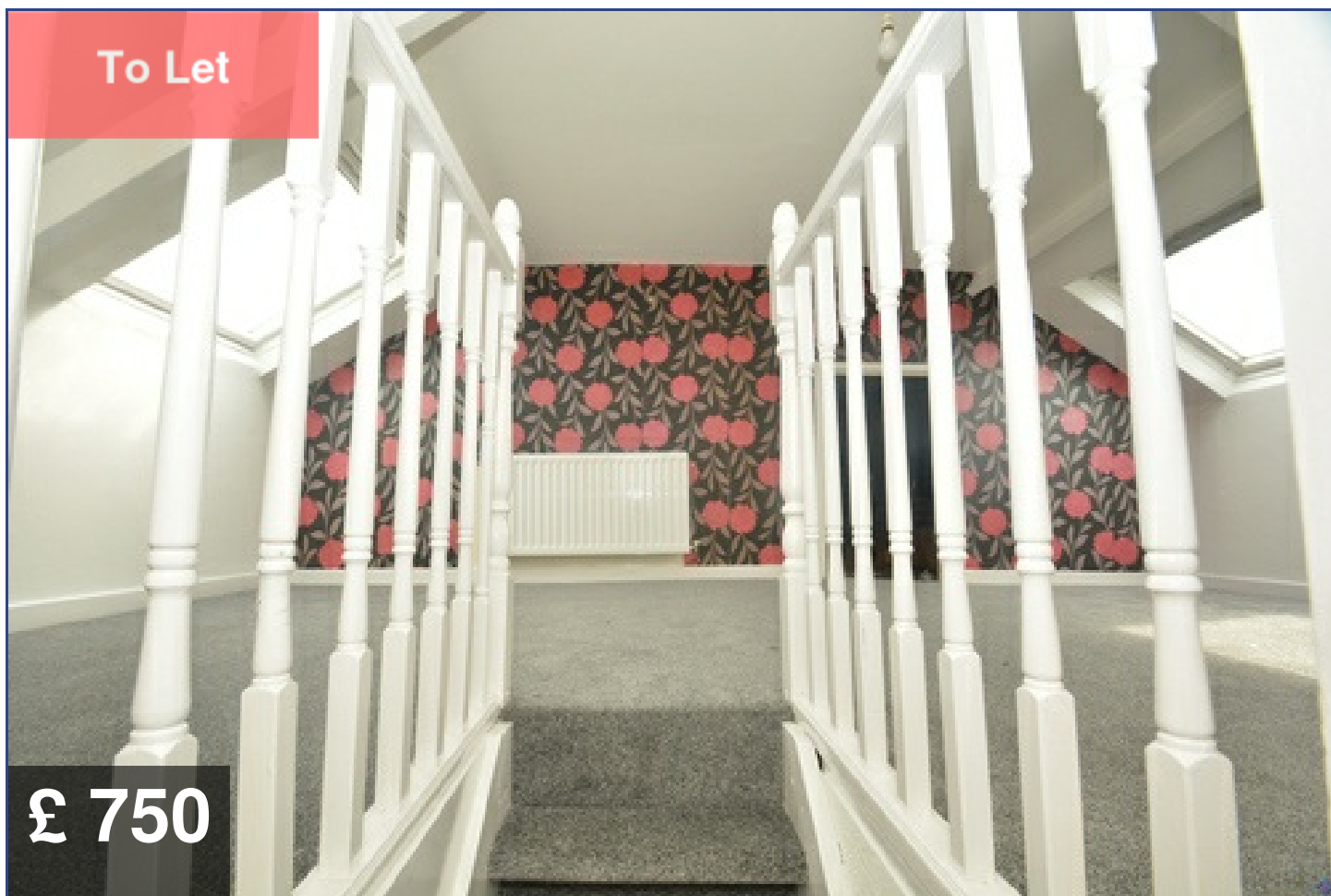




SEALPROPERTIES
RENTAL MARKET SPECIALISTS

**45 Westbourne Avenue
Gateshead
NE8 4NF**



4 Bedroom Maisonette

Beds : 4

Bath : 1

Parking : On Street

Gas CH : Yes



0191 580 5900



WWW.SEALPROPERTIES.CO.UK



INFO@SEALPROPERTIES.CO.UK

Contact Us

Agent Information

Emma

0191 5805900

emma@sealproperties.co.uk

167/169 Saltwell Road

Gateshead, NE8 4TJ

sealproperties.co.uk



Scan Me

Scan Me For Property Details



Quote Me

Quote This Reference Number For
More Information

SP16110228

Disclaimer

Whilst every effort is made to ensure the contents of this brochure are accurate and true, the particulars are set out as a general outline for guidance purposes only and do not constitute any part of an offer or contract. Interested Parties should not rely on them as statements of representation of fact, but instead must satisfy themselves by inspection or otherwise as to their accuracy.

A Holding Fee equivalent to one week's rent is payable. Please contact the office for more details.

Energy Performance Certificate (EPC) information is available upon request. Please contact the office.

Gallery



Description

SEAL Properties welcome to the rental market this four bedroom Maisonette situated on Westbourne Avenue. The property has a large living room, kitchen, bathroom and 4 bedrooms. It is situated near to Saltwell Park, Schools, various shops and business on Coatsworth Road.

Specification

GROUND FLOOR

Entrance Hallway

Clean and tidy hallway entrance. Neutrally decorated.

Living Room

The living room is spacious with an area for dining and relaxing. It has carpets and is nicely decorated.

Kitchen

The galley style kitchen has a range of wood wall and base units with wood effect worktops. It includes an Integrated oven and gas hob.

Bedroom One

The master bedroom is a large double bedroom. Decorated and carpets.

Bedroom Two

Single bedroom at the front of the property. Decorated and carpets.

Bedroom 3

Single bedroom at the back of the property. Decorated and carpets.

Bedroom 4

Upstairs attic there is a double bedroom. Decorated and carpets.

Family Bathroom

Doubled glazed with a radiator. There is a bath with overhead shower, Low flush W.C, hand wash basin, lino flooring.

OUTSIDE

Rear

To the rear of the property there is a small private yard.