

EATON SQUARE

BELGRAVIA • SW1







Eaton Square, Belgravia SW1

Situated within the key building on the South side of Eaton Square, this 3 bedroom flat is arranged over the first and second floor and benefits from a magnificent drawing room with 3.9 metre ceiling height and three floor to ceiling French doors leading onto a balcony overlooking Eaton Square.

Location

The flat is situated on the South side of the square a short walk from Victoria station (0.4 miles away), which offers tube and mainline services including a fast link to Gatwick Airport. The boutique shops and restaurants on Elizabeth Street are close by and Sloane Square tube station is 0.3 miles away, along with the Kings Road and Sloane Street. (All distances and times given are approximate).

Accommodation and Amenities

Reception Room • Dining Room • Kitchen • Master Bedroom with en-suite bathroom • Further Bedroom • Bathroom • Guest Cloak Room • Study Room • Utility Room • Balcony • Terrace

Terms

Tenure: Leasehold expires **24/12/2071**

Local Authority: City of Westminster

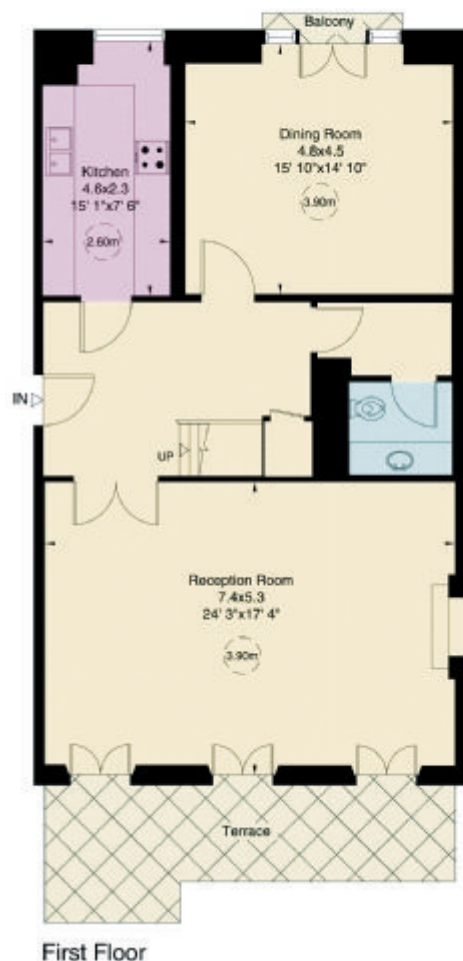
Eaton Square, SW1

Gross internal area (approx.)

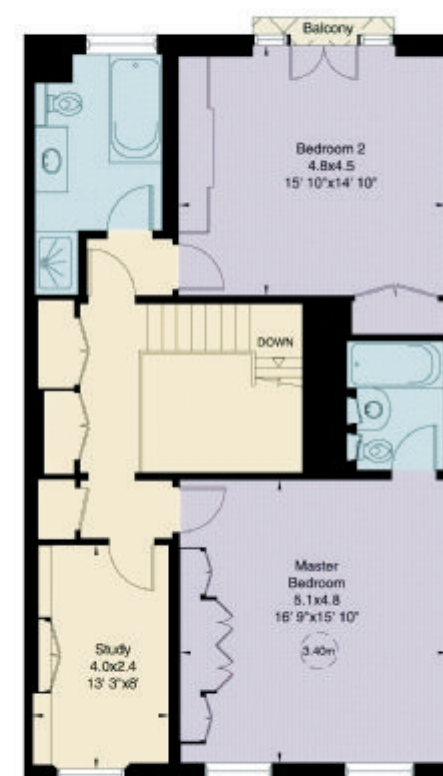
207 Sq m (2230 Sq ft)

For identification only, Not to Scale

Floor Plan by **capital group** 020 8671 7722



Half Landing



Second Floor